



KWAZULU-NATAL
PROVINCIAL GOVERNMENT
REPUBLIC OF SOUTH AFRICA



KWAZULU-NATAL PROVINCIAL SPATIAL DEVELOPMENT FRAMEWORK (PSDF)

KWAZULU-NATAL PROVINCIAL GROWTH AND DEVELOPMENT STRATEGY (PGDS)

16 JULY 2020

SECTORAL THEMED WEBINARS: SOCIAL

GROWING KWAZULU-NATAL TOGETHER

PSDF SOCIAL OUTCOMES WEBINAR AGENDA

1. Welcome and Opening Remarks (Mrs. Amanda Zungu)
2. Acknowledgement of Stakeholders (Mrs. Amanda Zungu)
3. Purpose of the Meeting (Mr. Riaan Thomson)
4. The Role of Stakeholders (Mr. Riaan Thomson)
5. Background to the PSDF (Mr. Sibongiseni Maseko)
6. Identification of Social Issues (Mr. Eugene de Beer)
7. Stakeholder Inputs (Mr. Eugene de Beer)
8. The Way Forward (Mr. Riaan Thomson)
9. Closing Remarks (Mrs. Amanda Zungu)



KWAZULU-NATAL PROVINCE

OFFICE OF THE PREMIER
REPUBLIC OF SOUTH AFRICA



WELCOME AND OPENING REMARKS

MRS. AMANDA ZUNGU

GROWING KWAZULU-NATAL TOGETHER



The structure and form of settlements continue to significantly aggravate the dominant social problems of poverty, inequality and unemployment.



KWAZULU-NATAL PROVINCE

OFFICE OF THE PREMIER
REPUBLIC OF SOUTH AFRICA

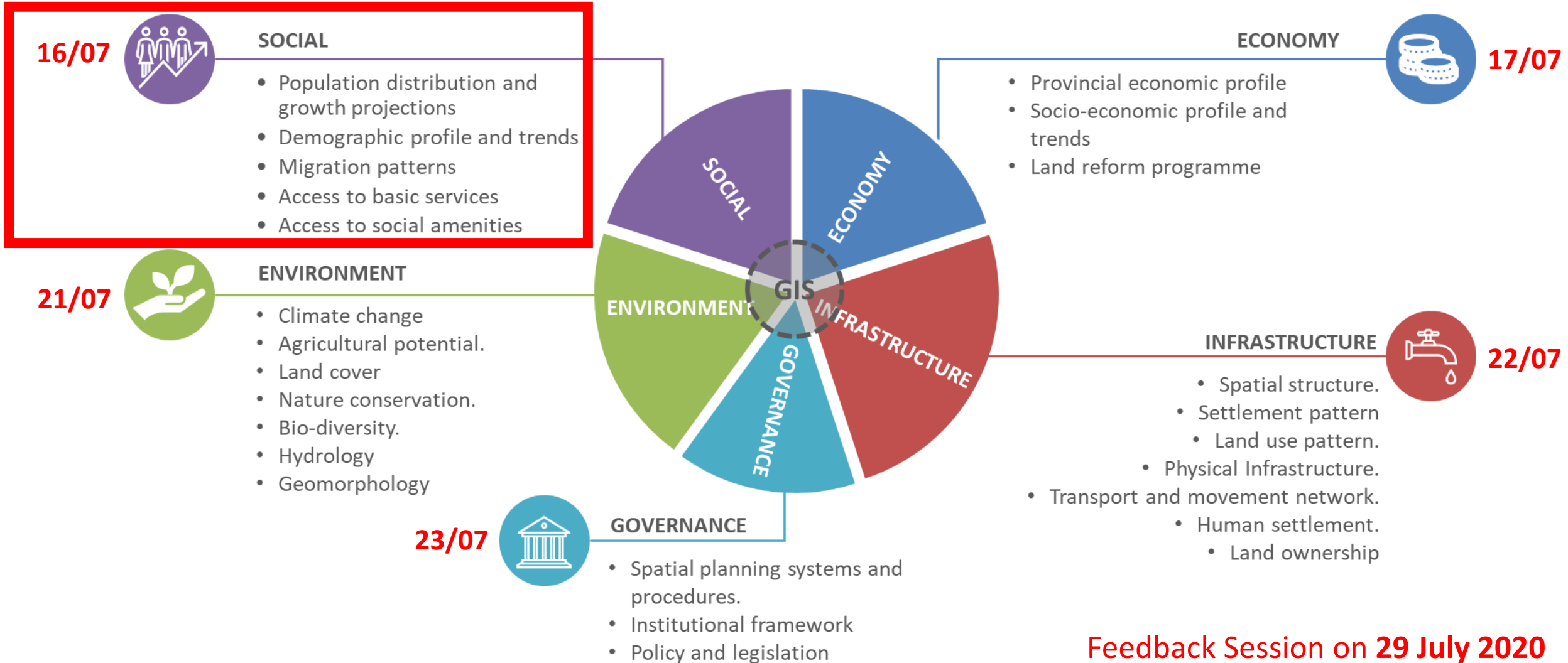


PURPOSE OF THE MEETING AND PARTICIPATION

MR. RIAAN THOMSON

GROWING KWAZULU-NATAL TOGETHER

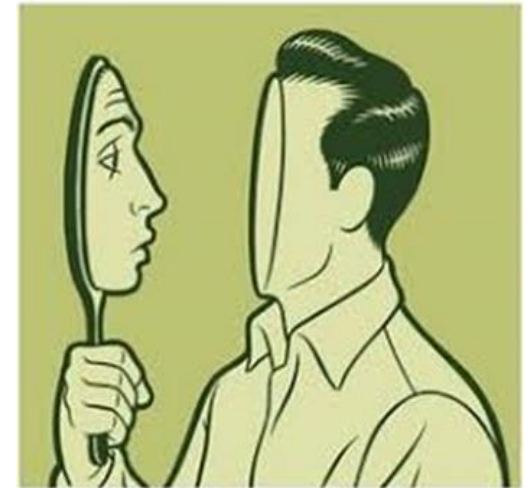
FIVE SECTORAL THEMES / FOCUS AREAS






Feedback Session on 29 July 2020

PURPOSE OF THE MEETING

1. To **introduce** the PSDF and PGDS process to sectoral stakeholder.
2. To **present** the initial identification of sectoral developmental issues.
3. To allow stakeholders to **share insights** on social issues and opportunities.
4. To identify any additional **sources of information**.
5. To ultimately assist in **defining the problem** statement and contribute **towards the spatial development vision** which will guide the formulation of the PSDF.



PARTICIPATING IN THE DISCUSSION

1. Meeting Chat Room 	2. Online Form Inputs 	3. Verbal inputs 
<p>Interact on the meeting chat and post any inputs on important social issues or solutions to consider.</p>	<p>Go to:</p> <p>tinyurl.com/PSDF-Social</p> <p>Six open questions relating to the identification of social development issues as well as options and opportunities.</p> <p>Form is already open and will remain open for multiple inputs until 28 July 2020.</p>	<ol style="list-style-type: none">1. Please raise your hand.2. The host will allow you to talk.3. Unmute your device.4. Please make concise and specific inputs on the identification of issues or opportunities to pursue as part of the PGDS / PSDF processes.



KWAZULU-NATAL PROVINCE

OFFICE OF THE PREMIER
REPUBLIC OF SOUTH AFRICA



PROVINCIAL SPATIAL DEVELOPMENT FRAMEWORK (PSDF)

MR. SIBONGISENI MASEKO

GROWING KWAZULU-NATAL TOGETHER

THE KZN PROVINCIAL SPATIAL DEVELOPMENT FRAMEWORK

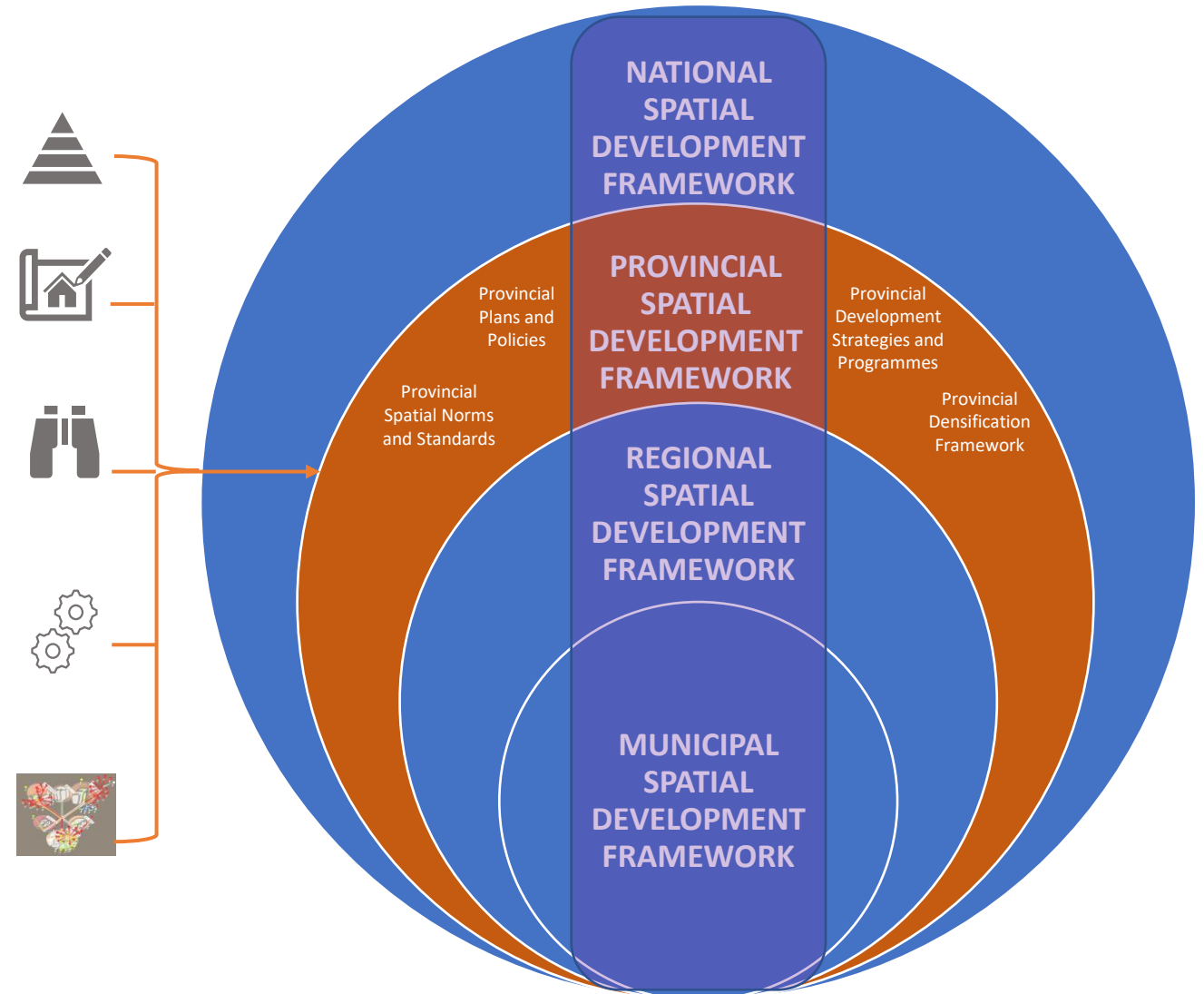
The SPLUMA introduces a hierarchical system of SDFs.

It provides for horizontal and vertical alignment SDFs.

The PSDF will present a provincial spatial development vision and programme.

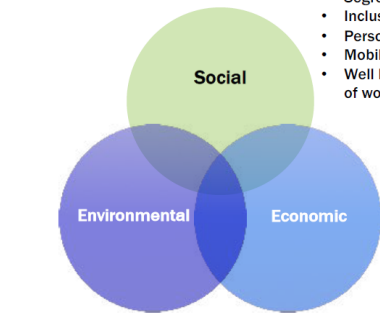
It will guide the Provincial Executive in the execution of provincial executive powers pertaining to land development and use.

It will address spatial issues and challenges facing KZN including colonial and apartheid spatial structure.



GUIDING PRINCIPLES

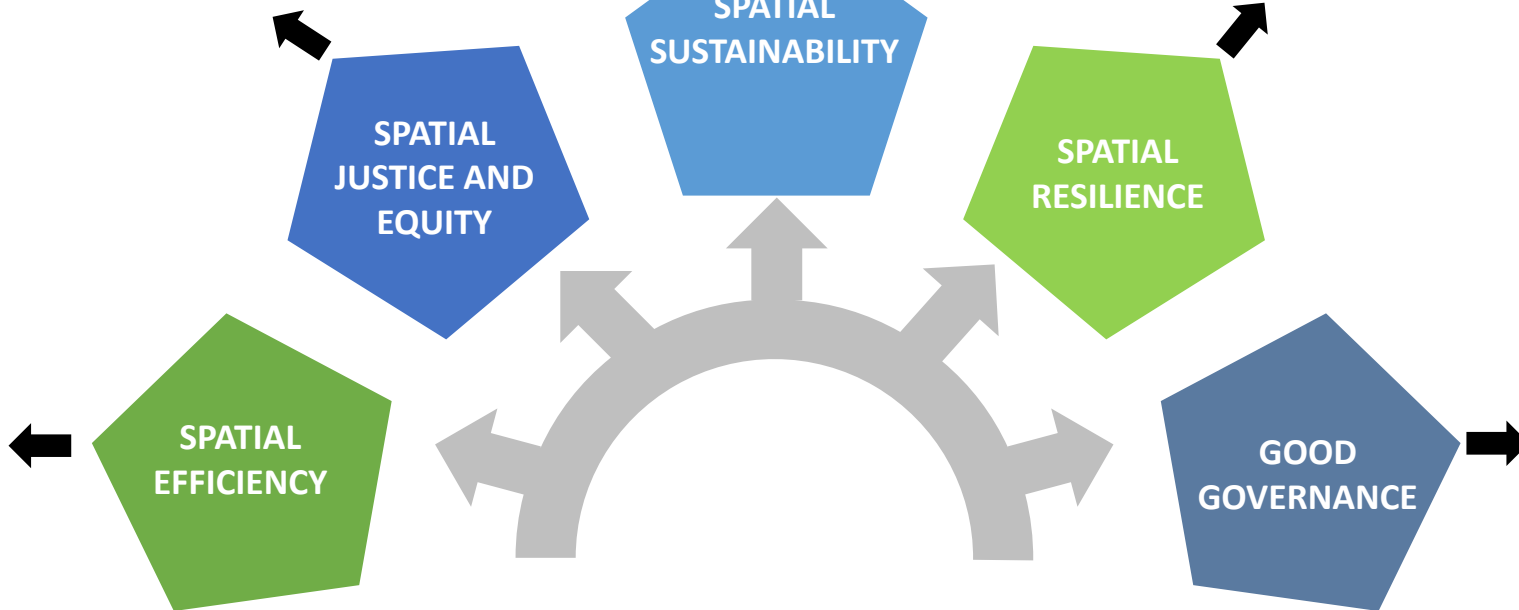
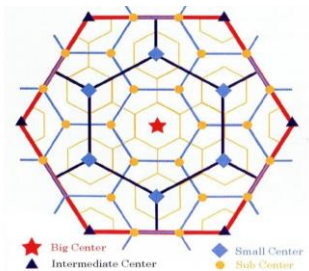
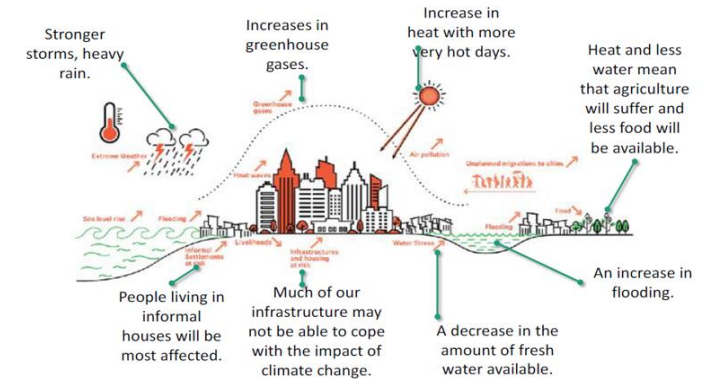
Balancing social, economic and environmental aspects



- Segregation, Integration,
- Inclusive spaces
- Personal safety
- Mobility and basic services
- Well located integrated settlements close to places of work

- Access to resources such as land for production, housing as an investment or collateral for finance
- Proximity as a resource
- Space to conduct economic activity and create jobs
- Lowering the cost of doing business

- Mitigating and adapting to climate change
- Assessing risks to climate change
- Ensuring that vulnerable households are protected
- Quality living environments

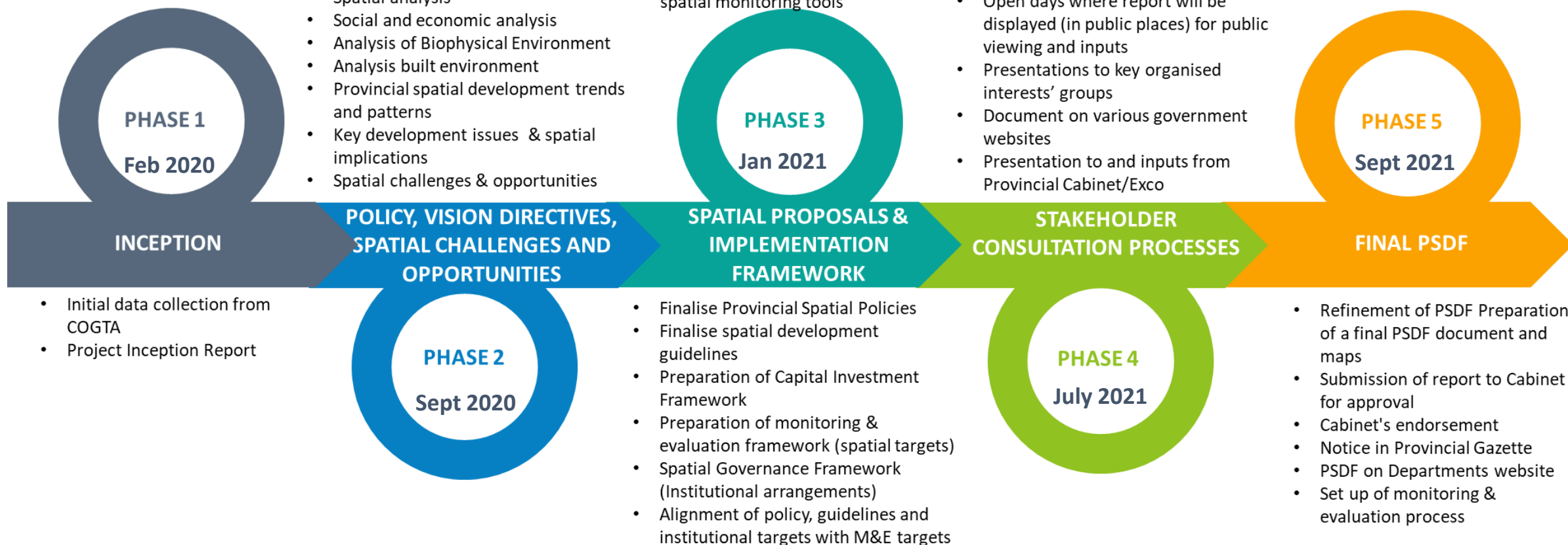


PSDF APPROACH

- Legislative and policy context
- Formulate draft provincial spatial vision
- Formulate SMART PSDF objectives
- Monitoring & Evaluation (Baseline Review)
- Spatial analysis
- Social and economic analysis
- Analysis of Biophysical Environment
- Analysis built environment
- Provincial spatial development trends and patterns
- Key development issues & spatial implications
- Spatial challenges & opportunities

- Final draft vision and objectives
- Spatial concepts
- Spatial strategies and policies
- Preparation of Draft Consolidated PSDF
- Preparation of a Final Draft PSDF Report
- Monitoring & Evaluation- establish indicators and targets
- Monitoring & Evaluation- develop spatial monitoring tools

- Finalise Final Draft PSDF for public participation
- Publication of a notice on the Provincial Gazette and Media informing the public about the draft PSDF and inviting comments
- Public workshops with a range of stakeholders
- Open days where report will be displayed (in public places) for public viewing and inputs
- Presentations to key organised interests' groups
- Document on various government websites
- Presentation to and inputs from Provincial Cabinet/Exco



Organised and structured stakeholder engagement throughout the planning process

PROPOSED STRUCTURE OF THE PSDF

01

Policy Context And Vision Directives

- Policy And Legislative Context
- Summary and implications
- Towards A Provincial Spatial Vision

02

Spatial Challenges And Opportunities

- Socio-economic trends and patterns
- Analysis of the Built Environment
- Analysis of the Biophysical Environment
- Cross Cutting Dimensions/concerns
- Synthesis of spatial issues, challenges and opportunities

03

Spatial Proposals

- Spatial vision
- Conceptual Framework
- Scenario development
- Spatial development objectives
- Spatial strategies, proposals and policies

04

Implementation Framework

- Provincial spatial policies
- Spatial development guidelines
- Capital investment framework
- Institutional arrangements

05

Consolidated PSDF

- Executive Summary
- Policy Directives
- Spatial Vision and objectives
- Synthesis of spatial issues, challenges and opportunities
- Spatial proposals
- Implementation Framework
- Monitoring and Evaluation system.



KWAZULU-NATAL PROVINCE

OFFICE OF THE PREMIER
REPUBLIC OF SOUTH AFRICA



IDENTIFICATION OF PROVINCIAL SOCIAL DEVELOPMENT ISSUES

MR. EUGENE DE BEER
MS. TINOTENDA MAKONI

GROWING KWAZULU-NATAL TOGETHER

BROAD SOCIAL CHALLENGES AND OPPORTUNITIES

Exclusion and poverty

Access to services

KZN urban to rural split

Health and Welfare

Crime and Safety

Education and training

Unemployment

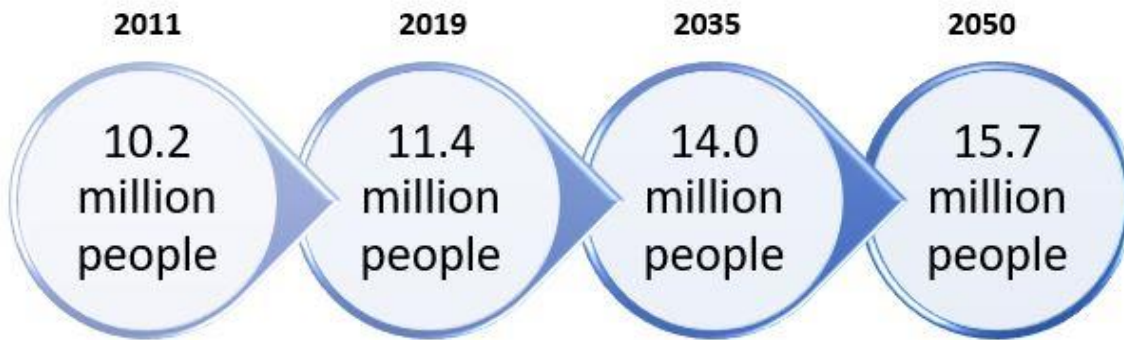
Social Grants and Social
Protection

SOCIAL ISSUES...

POPULATION GROWTH AND DISTRIBUTION

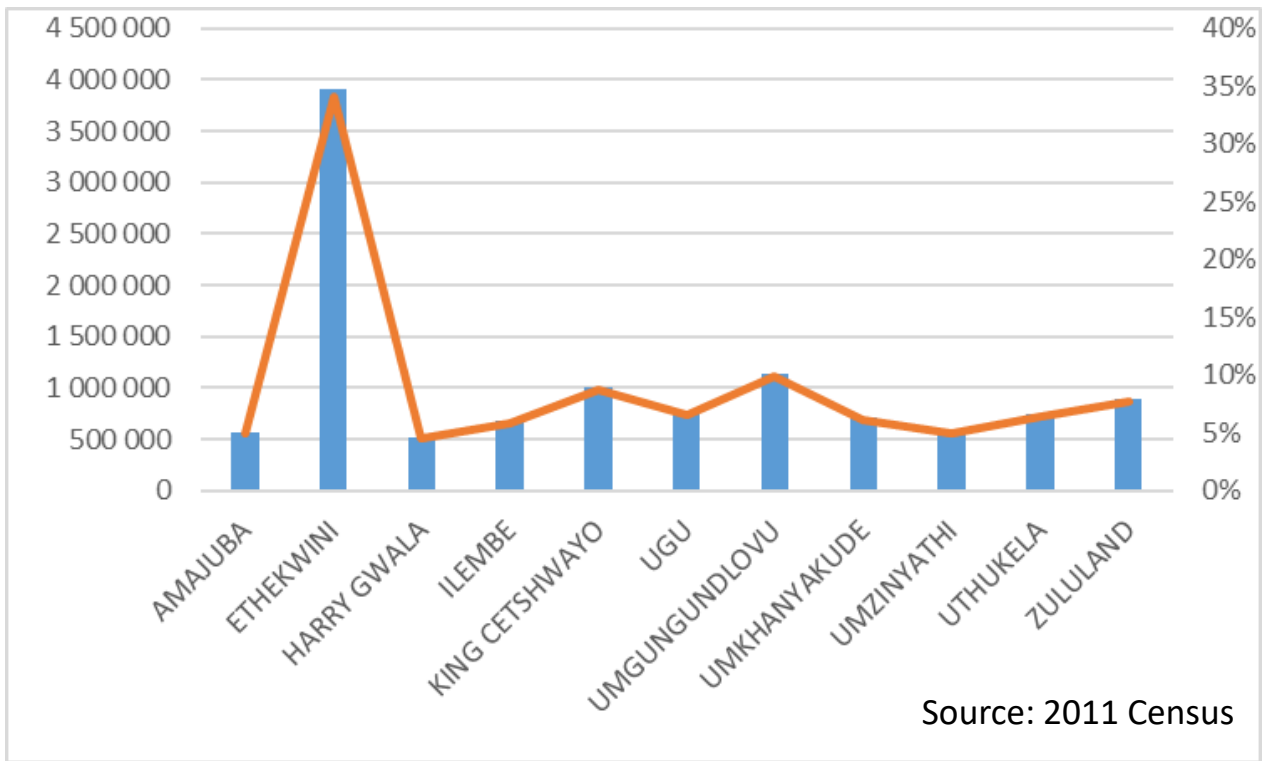
KZN is the second most populous province in the country. And the population is likely to increase in size and density across the province especially in eThekweni.

The population is unevenly distributed across the province with people concentrating mainly within urban centres that have better economic opportunities and improved social amenities such as eThekweni, Umgungundlovu and King Cetshwayo.



Source: 2011 Census, CSIR Green Book 2020

The population of KZN recorded modest growth rate from 1996 to 2016 (1.27%).



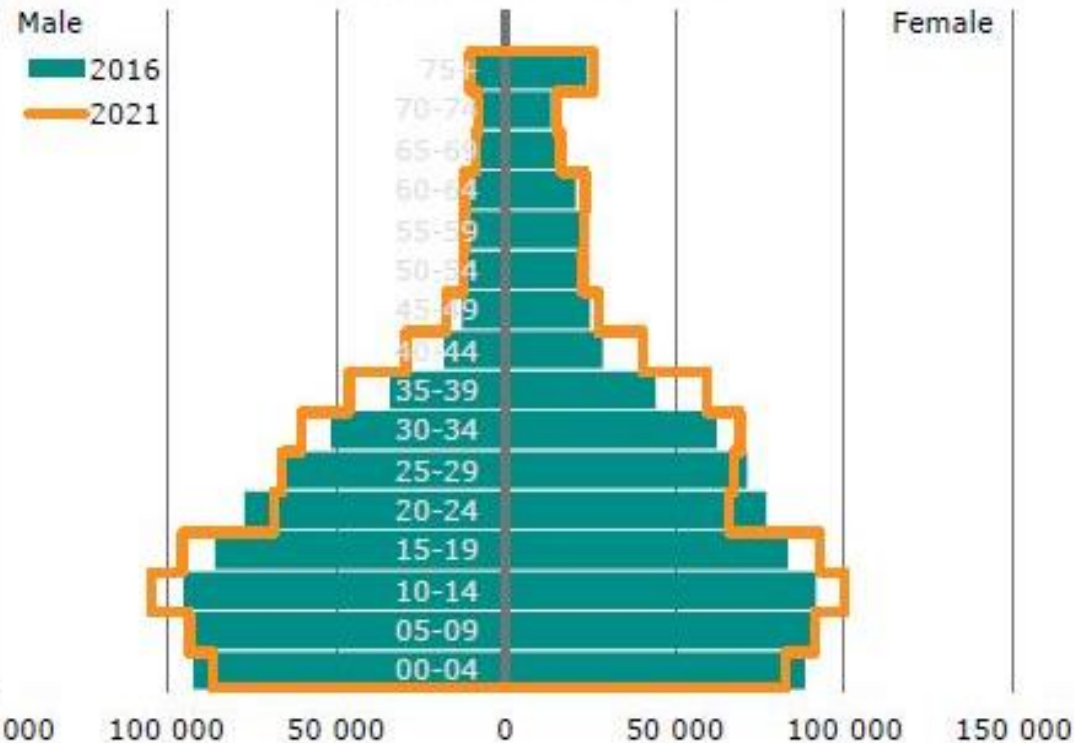
Source: 2011 Census

SOCIAL ISSUES...

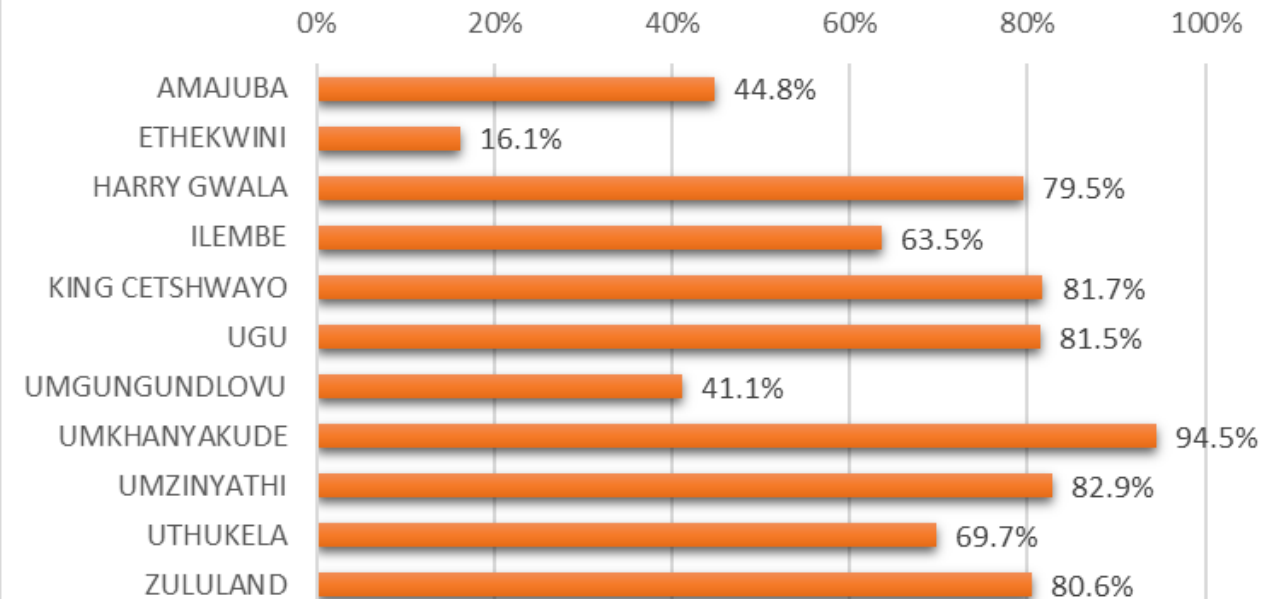
POPULATION STRUCTURE AND COMPOSITION

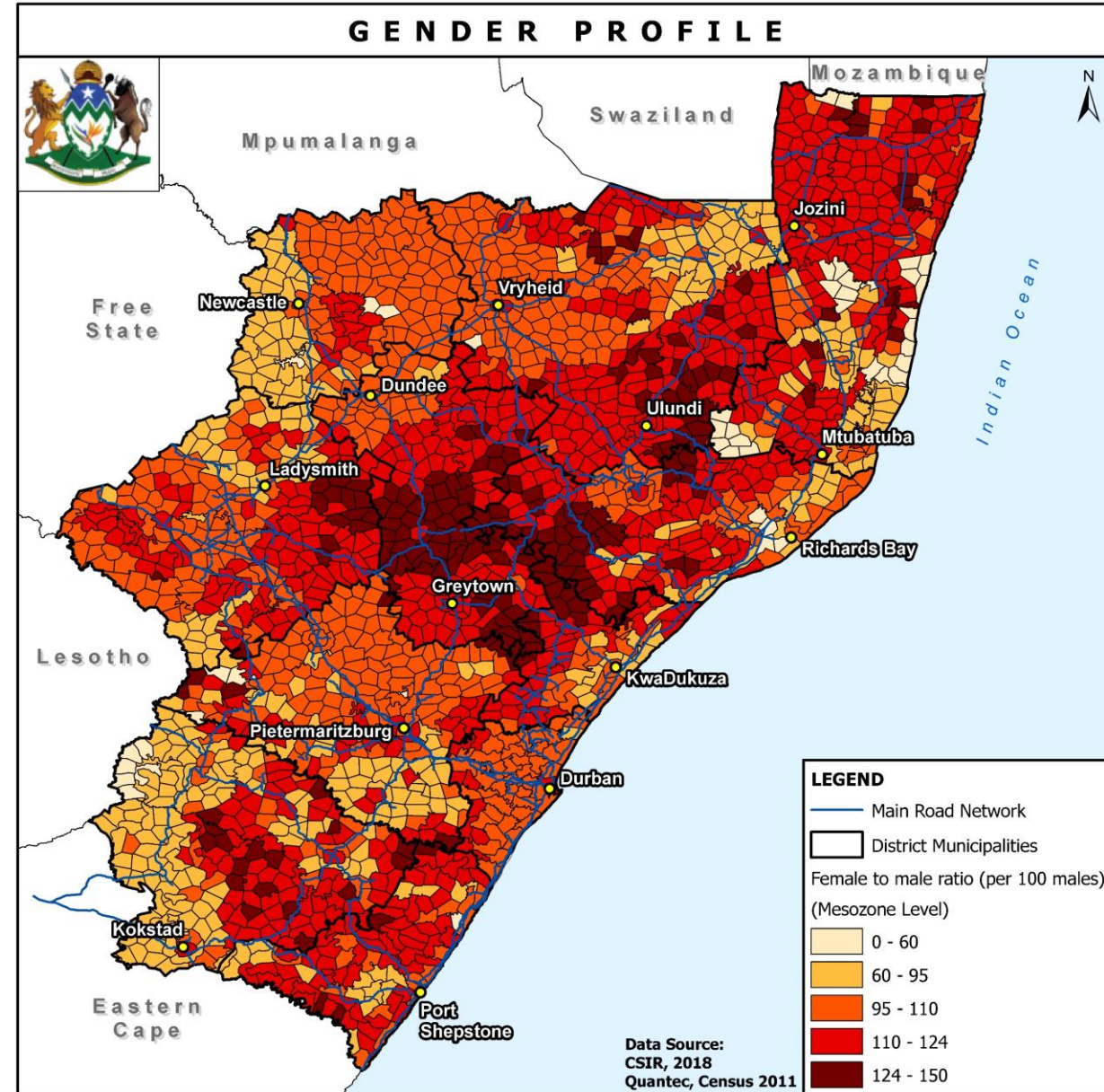
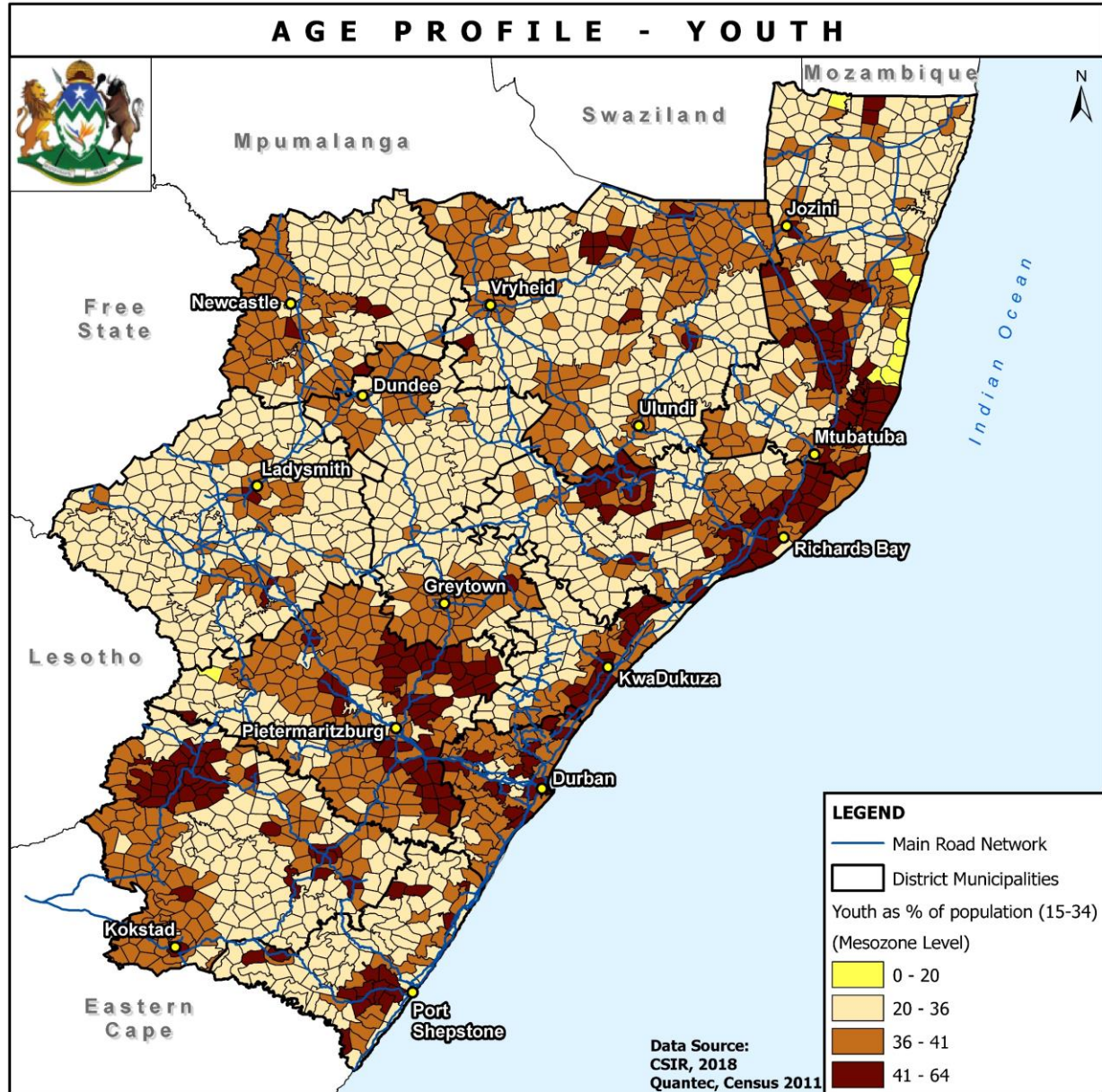
The structure of the KZN population is an expansive one with a wide base characterised by a large young age group cohorts and a small elderly cohort.

KZN still has a large rural population (48%) that must be served



RURAL POPULATION





SOCIAL ISSUES...POVERTY AND SOCIAL WELFARE

Although there is a declining trend in different indices of poverty in the Province, KwaZulu-Natal ranks among the poorer provinces in South Africa.

% Households below the lower bound poverty line



Socio economic factors, including poverty, inadequate access to potable water, sanitation, electricity, lack of refuse removal, and low literacy levels are associated with poor health status and negative health outcomes.

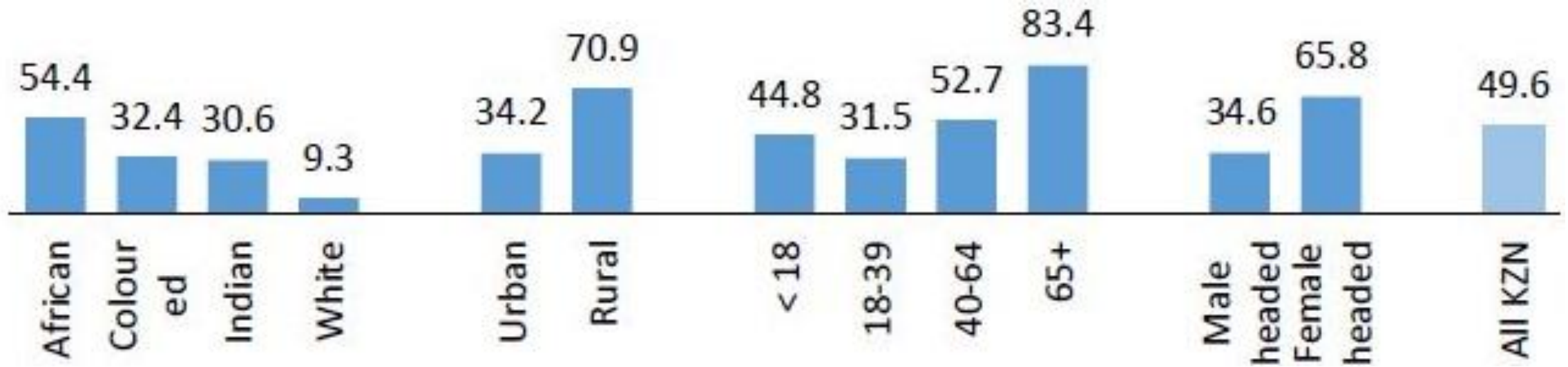
Progress in education is hampered by capacity challenges including inequality in access to tertiary education among young people in different sub-groups of the population.

Official crime statistics indicate some improvement in the safety profile however many ordinary people in the province are still prevented from a number of everyday activities for fear of crimes.

SOCIAL ISSUES...

SOCIAL PROTECTION

About 50% of the Households in KZN receive social grants. Rural households, those headed by Africans, women and people older than sixty-four years receive social grants more than others.



Source: General Household Survey, 2016

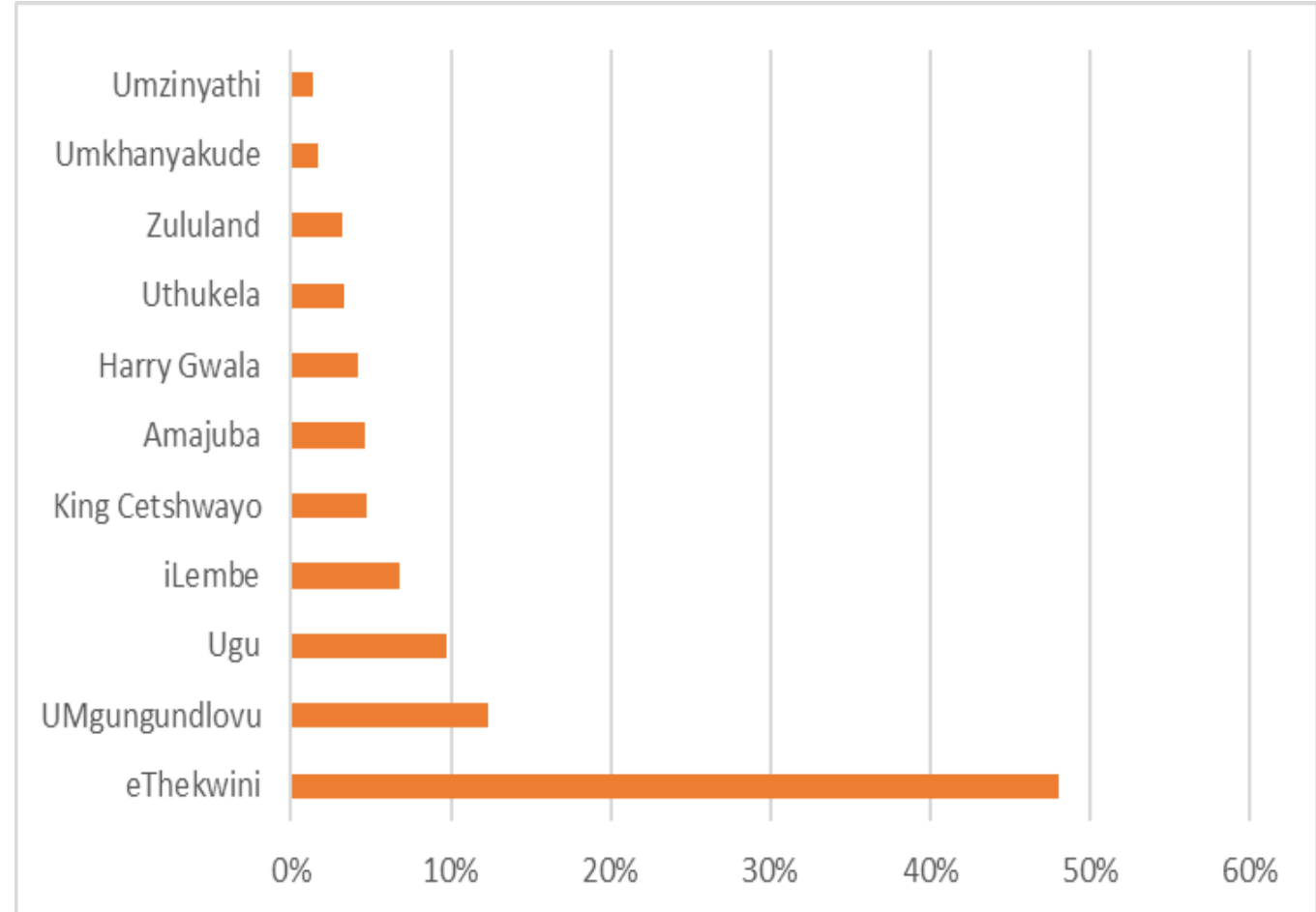
SOCIAL ISSUES...

MIGRATION PATTERNS

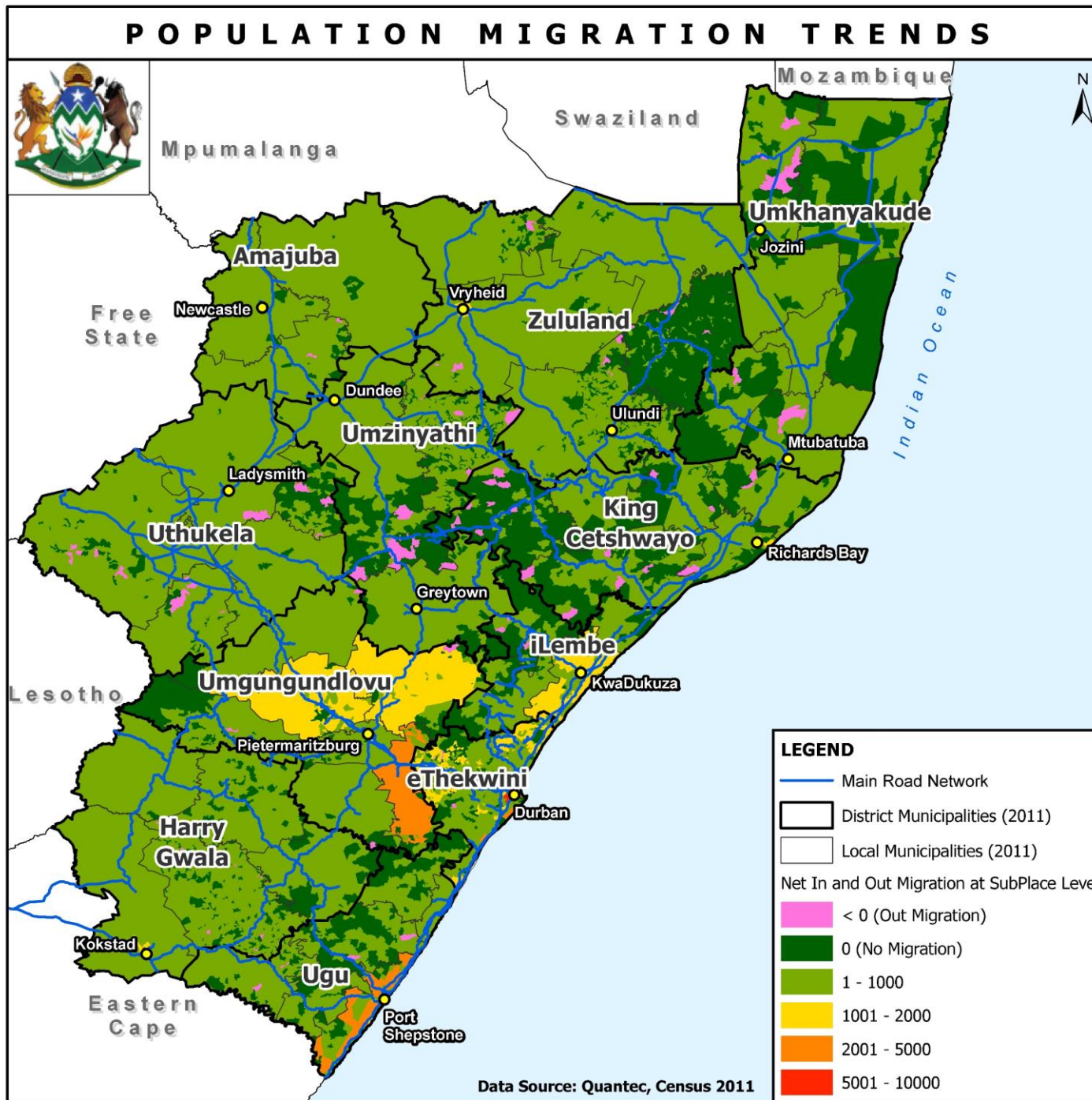
KZN has a net out migration of people to other parts of country especially Gauteng.

The movement of people within the province tends towards the areas of higher economic opportunities and urbanisation as well as high availability of social amenities.







People who migrate from or within the province share basic characteristics, namely they are predominantly working age group seeking economic opportunity or improved availability of basic services.



Source: 2011 Census Data



FUNDAMENTAL QUESTIONS – SOCIAL INTERVENTIONS AND THE PGDP AND PSDF

 DEMOGRAPHICS	 LOCATION AND MOBILITY	 SOCIO-ECONOMIC VULNERABILITY	 SOCIAL AMENITIES	 ENVIRONMENTAL UNCERTAINTIES	 DIGITAL SOLUTIONS
<ul style="list-style-type: none"> • How is the demographic profile of the province likely to evolve in future? • To what extent will the future patterns be influenced by changing social and economic circumstances? 	<ul style="list-style-type: none"> • Will the current mobility patterns continue into the future given impacts of COVID-19 and climate change? • How rapidly will the changing cultures in human settlement pattern change: rural vs urban; small settlements vs larger towns? 	<ul style="list-style-type: none"> • Which mechanisms for addressing poverty in the province are more effective? • How can PSDF policy incentivise the creation of more and higher quality jobs and opportunities for people at risk of poverty? 	<ul style="list-style-type: none"> • How can access to opportunities be improved in isolated or disconnected areas? • How can the quality of services be addressed more effectively through spatial equity? 	<ul style="list-style-type: none"> • How best can the PSDF integrate environmental solution into approaches to housing, regeneration and economic development? 	<ul style="list-style-type: none"> • What are the positive and negative implications of the expansion of the digital space and the future emphasis on the use of digital platforms?

DRIVERS OF CHANGE



➔ FUNDAMENTAL QUESTIONS

- CURRENT TRENDS
- FUTURE TRENDS



tinyurl.com/PSPDF-Social



KWAZULU-NATAL PROVINCE

OFFICE OF THE PREMIER
REPUBLIC OF SOUTH AFRICA



WAY FORWARD

MR. RIAAN THOMSON

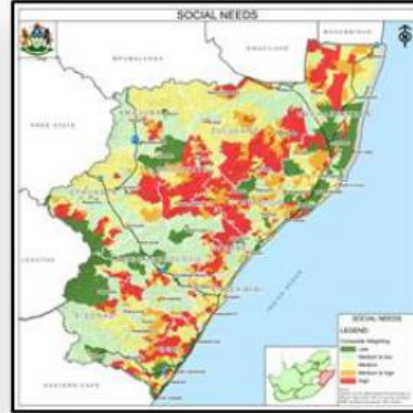
GROWING KWAZULU-NATAL TOGETHER



COMPOSITE ENVIRONMENTAL SENSITIVITY



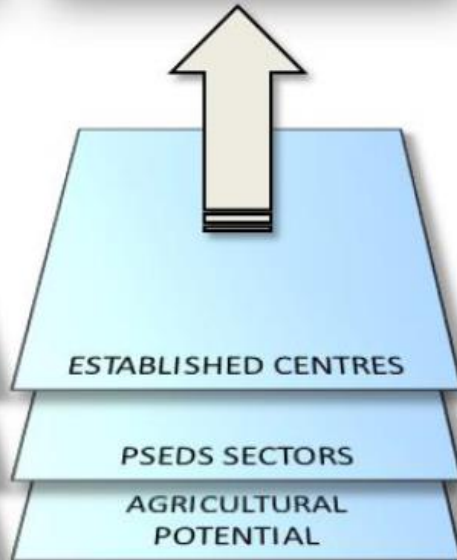
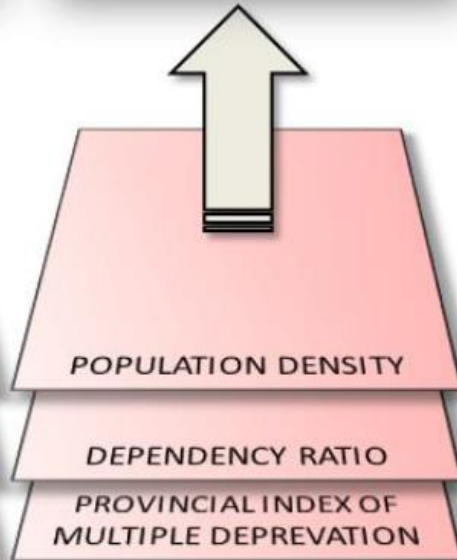
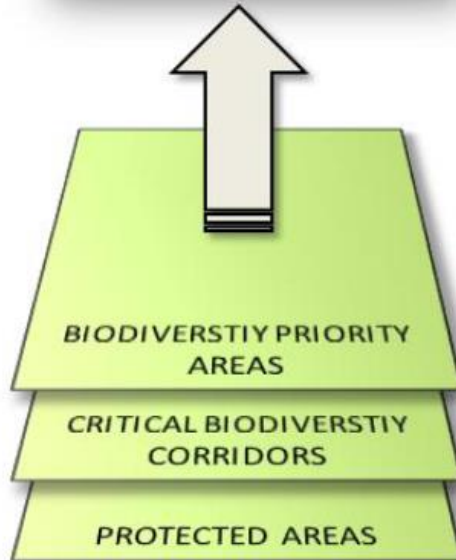
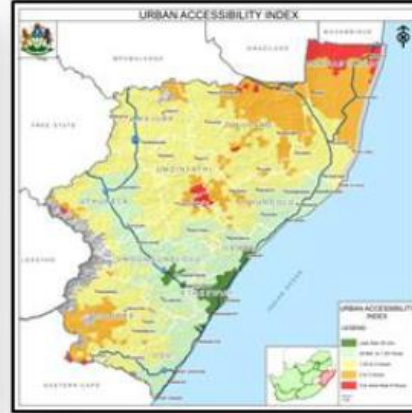
COMPOSITE SOCIAL NEEDS



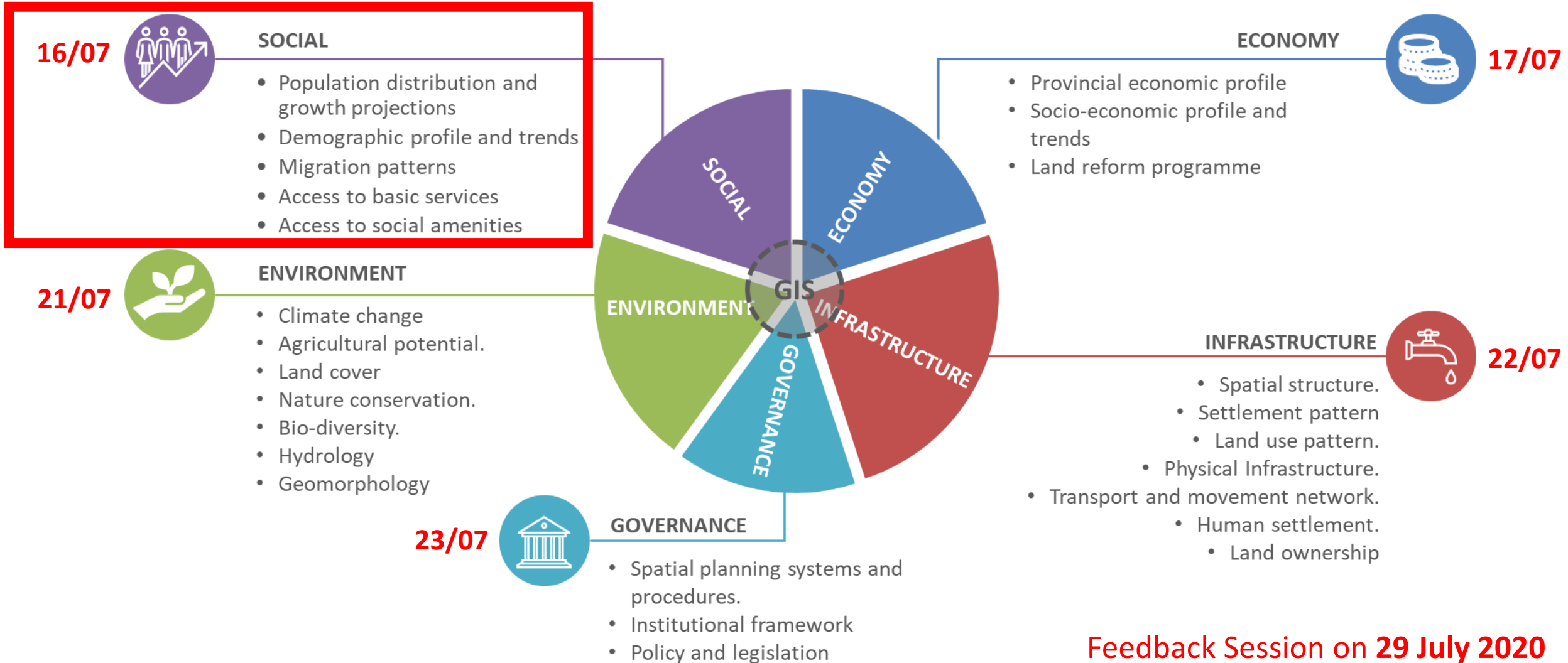
COMPOSITE ECONOMIC POTENTIAL



COMPOSITE ACCESSIBILITY



FIVE SECTORAL THEMES / FOCUS AREAS



Feedback Session on 29 July 2020

TO REGISTER AS AN INTERESTED AND AFFECTED PARTY, PLEASE VISIT THE
FOLLOWING WEBSITES OR REGISTER VIA EMAIL

PSDF

Please visit our website at
<http://www.kzncogta.gov.za/psdf/>

Inputs and suggestions can be emailed to:
Email: PSDF@kzncogta.gov.za

Ms Amanda Zungu and Mr Sphelele Mhlongo
Contact no: 033 355 6428

PGDS

Please visit our website at
www.kznppc.gov.za

Inputs and suggestions can be emailed to:

Sithembile Myeza
sithembile.myeza@kznpremier.gov.za

Dawn Dorning
dawn.dorning@kznpremier.gov.za

tinyurl.com/PSDF-Social

THANK YOU

**GROWING
KWAZULU-NATAL
TOGETHER**