



**KWAZULU-NATAL**  
PROVINCIAL GOVERNMENT  
REPUBLIC OF SOUTH AFRICA



# KWAZULU-NATAL PROVINCIAL GROWTH AND DEVELOPMENT STRATEGY (PGDS)

# KWAZULU-NATAL PROVINCIAL SPATIAL DEVELOPMENT FRAMEWORK (PSDF)

15 JULY 2020

## SECTORAL THEMED WEBINARS: INTRODUCTORY SESSION

GROWING KWAZULU-NATAL TOGETHER

# OPENING REMARKS

**MR. S.E. HLOMUKA**  
**MEC FOR COOPERATIVE GOVERNANCE & TRADITIONAL  
AFFAIRS**

# OPENING REMARKS

MR MZIMKULU MSIWA

CHAIRPERSON: PROVINCIAL PLANNING COMMISSION

# INTRODUCTORY WEBINAR



## PGDS (Provincial Growth and Development Strategy)

1. Background to PGDS
2. PGDS Review Process
3. PGDS Review Process Plan
4. Draft PGDS Framework

## PSDF (Provincial Spatial Development Framework)

1. Background to PSDF
2. The KZN PSDF
3. PSDF Content and legal effect
4. PSDF approach and proposed structure
5. Stakeholder Engagement Approach
6. Webinars Structure & Program

# BACKGROUND TO THE PSDF

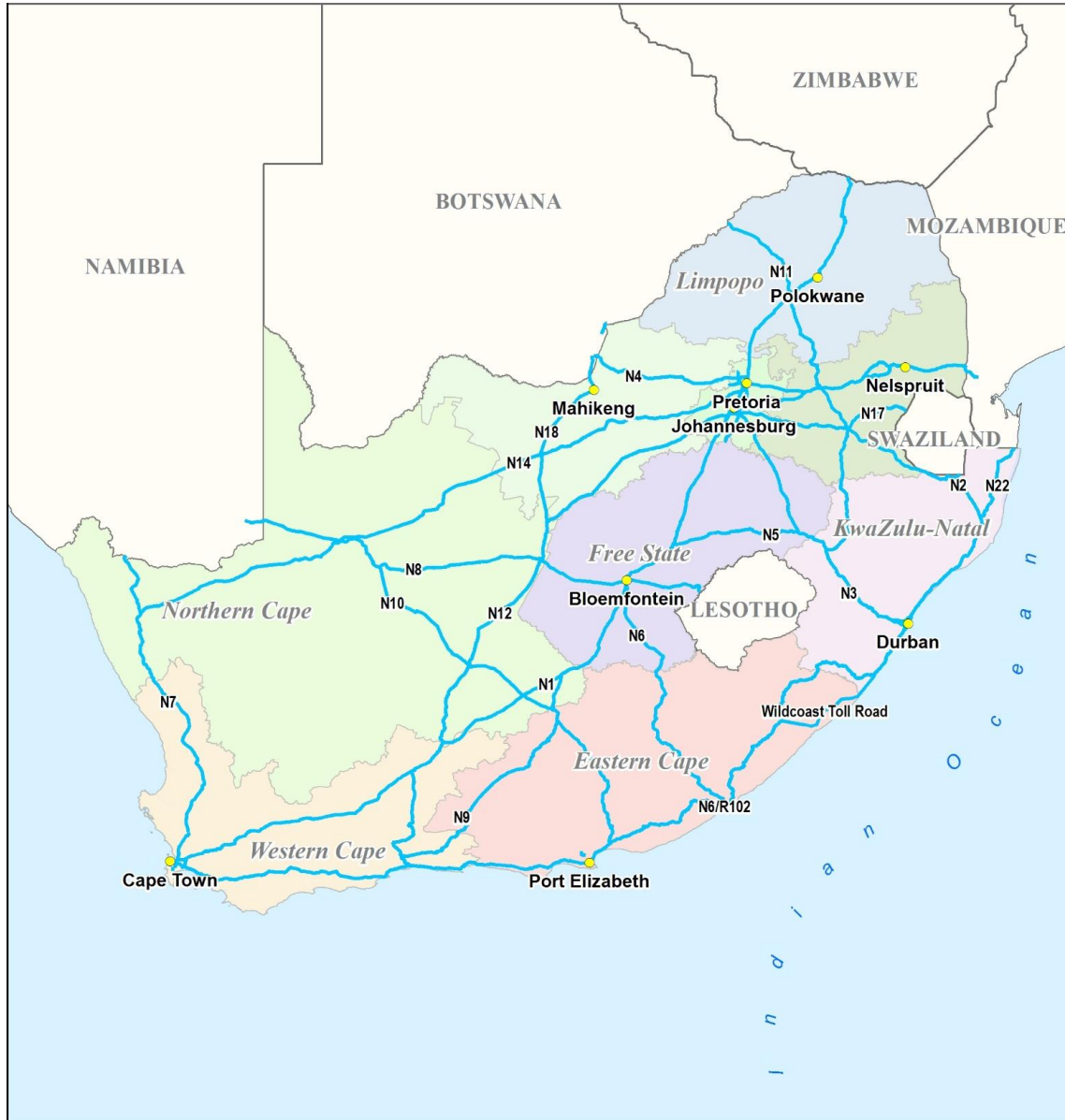
## PSDF REVIEW

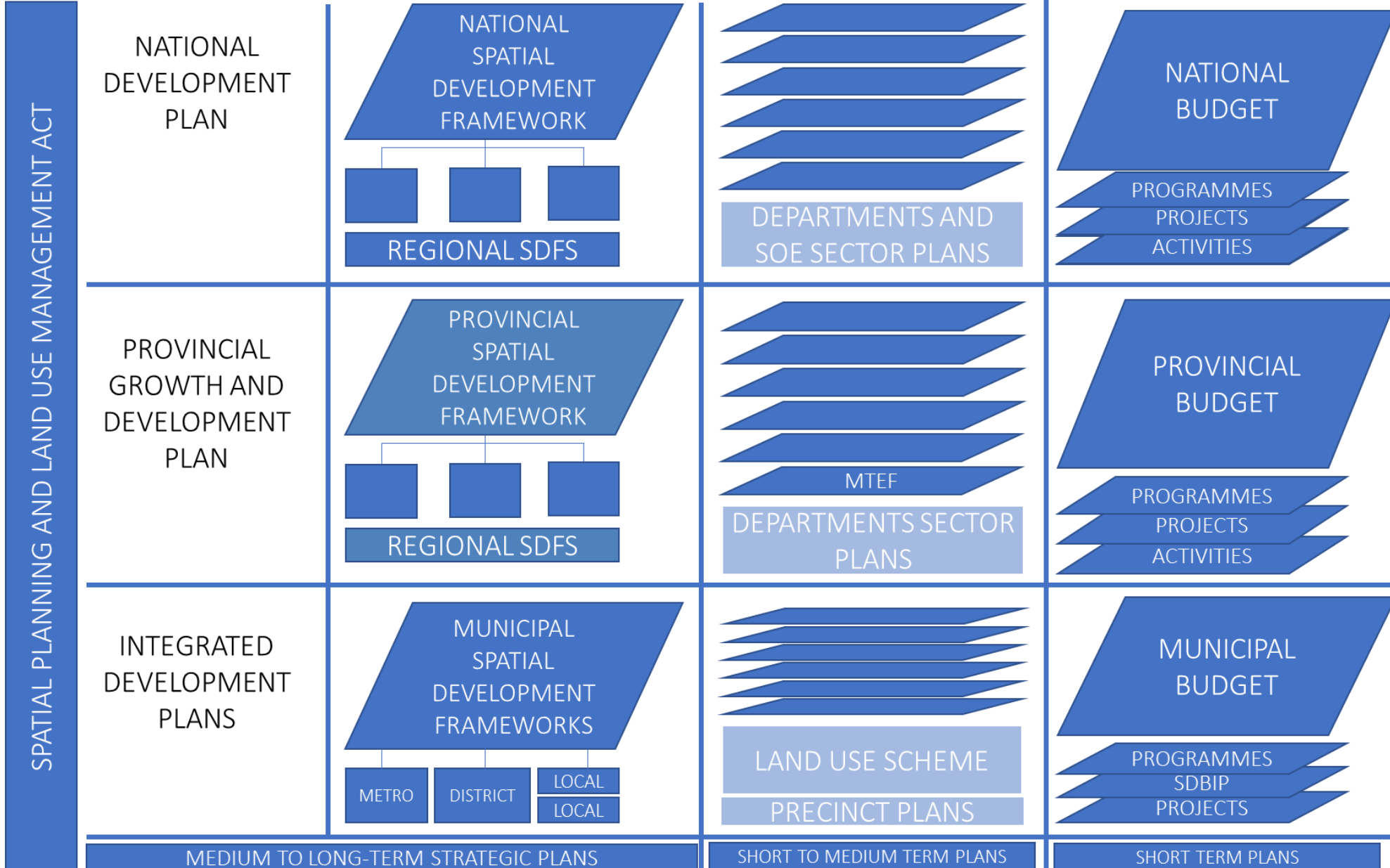
- The function of reviewing and producing a SPLUMA compliant PSDF was assigned to COGTA from the Premier's Office by Cabinet in February 2017.
- The Department, through the Chief Directorate: Municipal Planning, is currently undertaking the Review of the KZN PSDF.
- The Review of the PSDF will be undertaken in 18 months as per the stipulated guidelines from the Department of Rural Development and Land Reform and is expected to be complete by October 2021.

## SPATIAL PLANNING SYSTEM

SPLUMA section 4: The Spatial planning system in the Republic consists of the following components;

- a) Spatial development frameworks to be prepared and adopted by national, provincial and municipal spheres of government;
- b) development principles, norms and standards that must guide spatial planning, land use management and land development;
- c) the management and facilitation of land use contemplated in Chapter 5 through the mechanism of land use schemes; and
- d) procedures and processes for the preparation, submission and consideration of land development applications and related processes as provided for in Chapter 6 and provincial legislation.







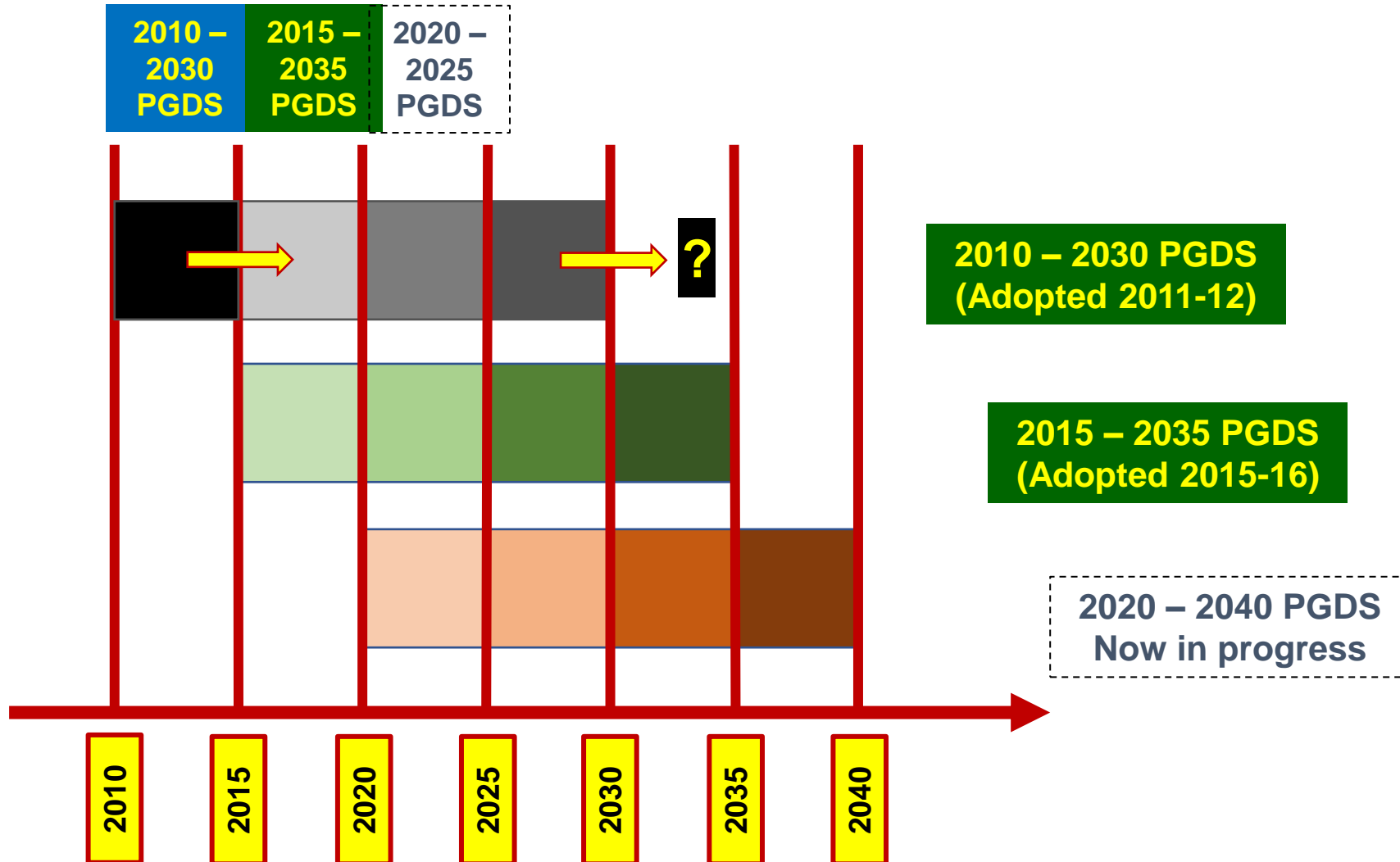
# PROVINCIAL GROWTH AND DEVELOPMENT STRATEGY (PGDS) REVIEW 2020

PGDS IS UP FOR  
A FIVE- YEAR  
REVIEW...





# Establishing a 20 year Vision, 5 year and Annual Planning Cycle



# SOME CRITICAL ISSUES GUIDING THE PGDS REVIEW

What has worked and what hasn't worked in the past five years? 2014-2019 Provincial Performance Review

What has changed in the public sector environment (external and internal)? Covid-19 Impact and Recovery Plans

What do we take out and what new things do we put into the strategic plan?

2019 and Feb 2020 Lekgotla Resolutions

NDP and 2019-2024 MTSF, National and Provincial Priorities ( Alignment of plans)

Situational Analysis, Socio Economic Outlook, 25 Year National review, CSS – Impact of COVID

# PGDS REVIEW PROCESS PLAN

## KEY DELIVERABLES

## KEY OUTPUTS

### Reviewed and updated Situational Analysis

Key challenges  
What has worked  
Where have we failed  
Why  
Responses

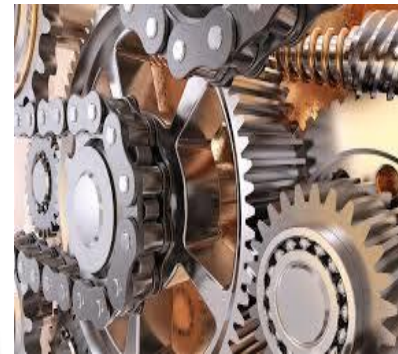


- Review of 2016 Situational Analysis
- Circulate for comment and input to PGDS Stakeholders and PPC

### Alignment Process and Development

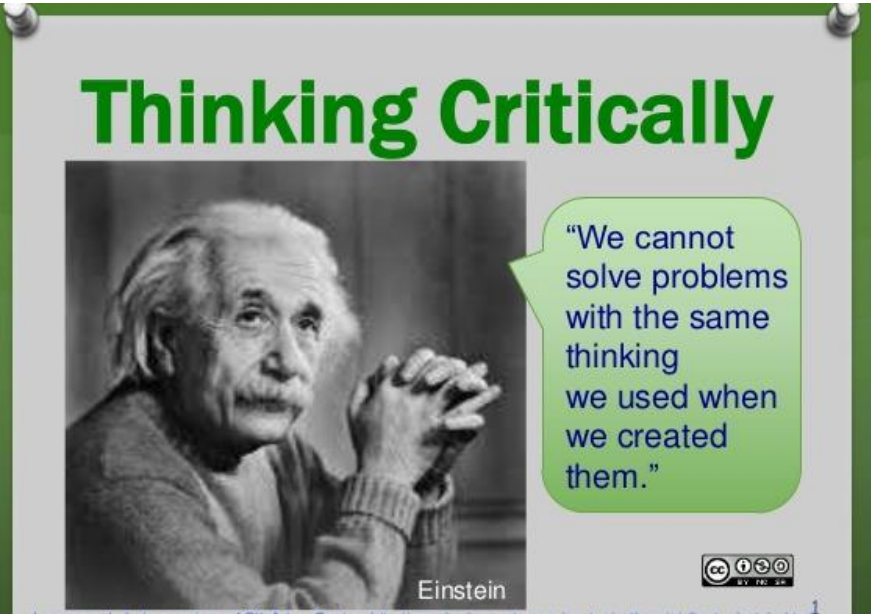
Structure and content of PGDS to be reworked in alignment with the MTSF 2019-2024

New Terminology  
Impact > Outcome >  
Similarities and contributions to National  
**KZN specific additions – Leveraging for development**



- Align structure of PGDS in alignment to the MTSF 2019-2024 (MTSF) and the provincial priorities of the 6<sup>th</sup> administration
- Add Provincial specific dynamics
- Workshop on content review of the PGDS in alignment with the MTSF and provincial priorities
- Produce First Draft Reviewed PGDS

# PGDS REVIEW PROCESS PLAN

KEY DELIVERABLES	KEY OUTPUTS (July)
<p><b>Stakeholder Engagement</b> Engage concurrently with Stakeholders and Technical Clusters for inputs and on First Draft Reviewed PGDS (concurrently with stakeholders)</p>  <p>The graphic features a black and white photograph of Albert Einstein with his hands clasped. To the right, a green speech bubble contains the quote: "We cannot solve problems with the same thinking we used when we created them." The text "Thinking Critically" is written in large green letters at the top. At the bottom left of the graphic is the name "Einstein" and at the bottom right is a Creative Commons license icon (CC BY-NC-SA).</p>	<ul style="list-style-type: none"> <li>Engage electronically with key stakeholders for inputs on First Draft Reviewed PGDS through the KZN Economic Council: Organised Business, Organised Labour and Organised Community Sector</li> <li>Webinars &amp; Website</li> <li>Engage with Technical Clusters on the First Draft Reviewed PGDS</li> <li>PPC engagement on proposed PGDS amendments / inputs from Stakeholders and Technical Clusters</li> </ul>

## PGDS REVIEW PROCESS PLAN

KEY DELIVERABLES	KEY OUTPUTS	TIMEFRAME
<p><b>Final Reviewed PGDS draft</b> Produce final draft reviewed PGDS for endorsement by the PEC Lekgotla</p>	<ul style="list-style-type: none"> <li>Finalise final draft reviewed PGDS</li> </ul>	30 July 2020
	<ul style="list-style-type: none"> <li>Present to Technical Lekgotla and PEC Lekgotla</li> </ul>	August 2020
	<ul style="list-style-type: none"> <li>Session to reflect on inputs from the Lekgotla and discussions for final tweaking and revisions</li> </ul>	September – Oct 2020
<p><b>Approval</b> Approval of reviewed PGDS aligned to the MTSF</p>	<ul style="list-style-type: none"> <li>Obtain Executive Council approval for reviewed PGDS</li> </ul>	Nov-Dec 2020

# DRAFT PGDS FRAMEWORK

Chapter 1: Introduction and Approach

Chapter 2: Strategic Analysis

Chapter 3: PGDS Strategic Framework

Chapter 4: Provincial Spatial Development Framework

Chapter 5: Catalytic Projects

Chapter 6: Institutional Framework for implementation

Chapter 7: Monitoring and Evaluation

Chapter 8: Way Forward

# DRAFT PGDS FRAMEWORK

## Strategic Analysis

>Key Challenges

>Key Interventions

Conclusions made from  
Strategic Analysis

## Sustainability Matrix:

- Environmental Resilience
- Human Development and Social Capital
- Economic Development
- Infrastructure
- Spatial Development
- Governance



## DRAFT PGDS FRAMEWORK - VISION

### KZN 20 YEAR VISION

KwaZulu-Natal will be a prosperous Province with a healthy, secure and skilled population, living in dignity and harmony, acting as a gateway to Africa and the World.”

S.O.S  
Do we need to adjust our  
vision statement for the  
Province?

How?

Why?



# DRAFT PGDS FRAMEWORK – STRATEGIC PRIORITIES – DRAWING FROM THE NDP AND MEDIUM TERMS STRATEGIC FRAMEWORK

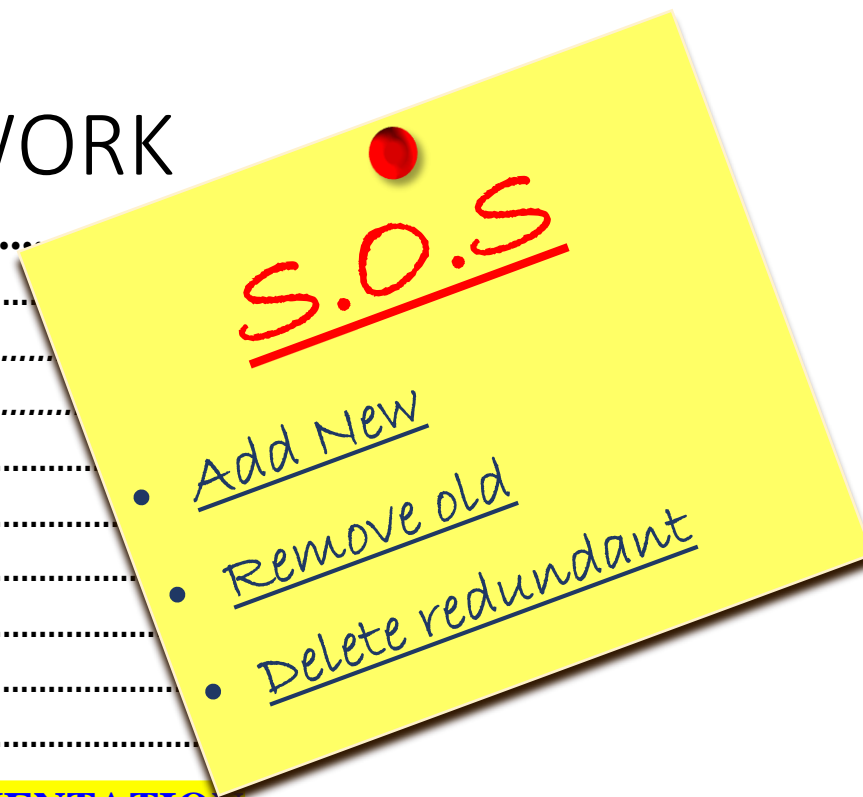


**S.O.S**

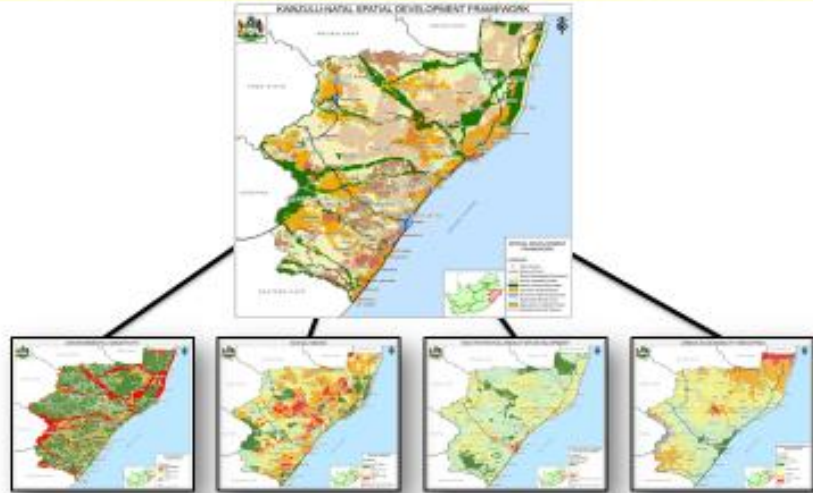
- What are the key issues we need to take into account
- Evidence based
- Challenges
- Interventions
- Vulnerable Groups

# DRAFT PGDS FRAMEWORK

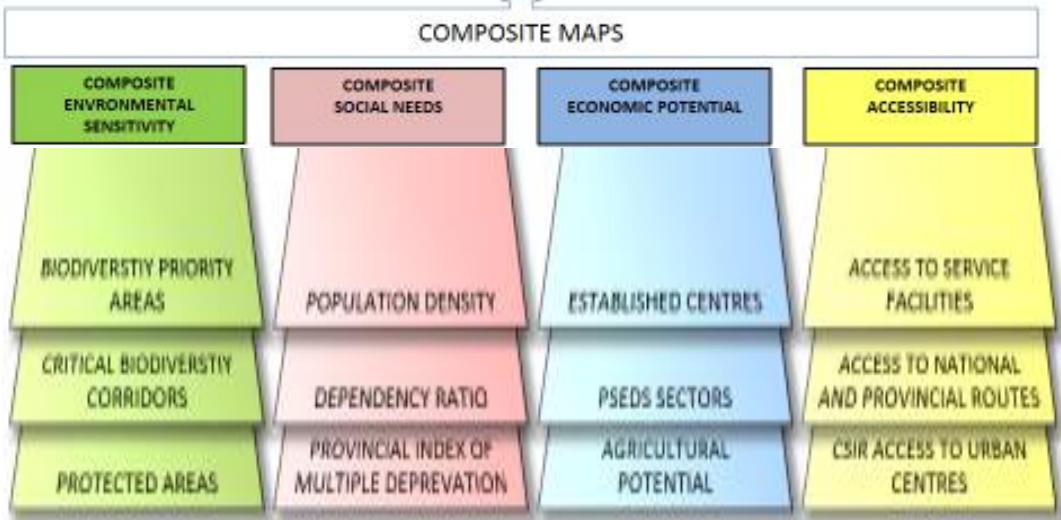
<b>4</b>	<b><u>PROVINCIAL SPATIAL DEVELOPMENT FRAMEWORK</u></b> .....	
4.1	<u>CONTEXT TO PLANNING SYSTEM</u> .....	
4.1.1	<i><u>Planning Systems &amp; Suite of Plans</u></i> .....	
4.1.2	<i><u>Relationship between PGDS &amp; PSDF</u></i> .....	
4.2	<u>LEGISLATIVE CONTEXT</u> .....	
4.3	<u>SPATIAL CHALLENGES</u> .....	
4.4	<u>SPATIAL RATIONALE</u> .....	
4.5	<u>STRATEGIC THEMES</u> .....	
4.6	<u>IMPLEMENTATION APPROACH</u> .....	
4.7	<u>DRAFT PROVINCIAL SPATIAL VISION MAP</u> .....	
<b>5</b>	<b><u>CATALYTIC PROJECTS AS KEY TO SUCCESSFUL IMPLEMENTATION OF THE STRATEGY</u></b> .....	<b>14</b>
<b>6</b>	<b><u>INSTITUTIONAL FRAMEWORK FOR IMPLEMENTATION</u></b> .....	<b>14</b>
<b>7</b>	<b><u>MONITORING AND EVALUATION</u></b> .....	<b>14</b>
<b>8</b>	<b><u>WAY FORWARD</u></b> .....	<b>14</b>



**GENERATING A SPATIAL INTERVENTION MAP**



**RANKING AND WEIGHTING TO INFORM INTERVENTION CATEGORIES**



IT IS NOT ONLY ABOUT **WHAT**, BUT ALSO ABOUT **WHERE**

- PGDS outlines **WHAT** needs to be done
- Informed by the spatial context (the **WHERE**)
- Recognises that economic, social and environmental benefits (and limitations) are not evenly distributed across the Province
- These need to be taken into consideration to locate interventions, based on the comparative advantages and disadvantages of different areas in KZN
- Updating the **WHAT** must also consider updating the **WHERE**



**KWAZULU-NATAL PROVINCE**

OFFICE OF THE PREMIER  
REPUBLIC OF SOUTH AFRICA



# PROVINCIAL SPATIAL DEVELOPMENT FRAMEWORK (PSDF)

GROWING KWAZULU-NATAL TOGETHER

# THE KZN PROVINCIAL SPATIAL DEVELOPMENT FRAMEWORK

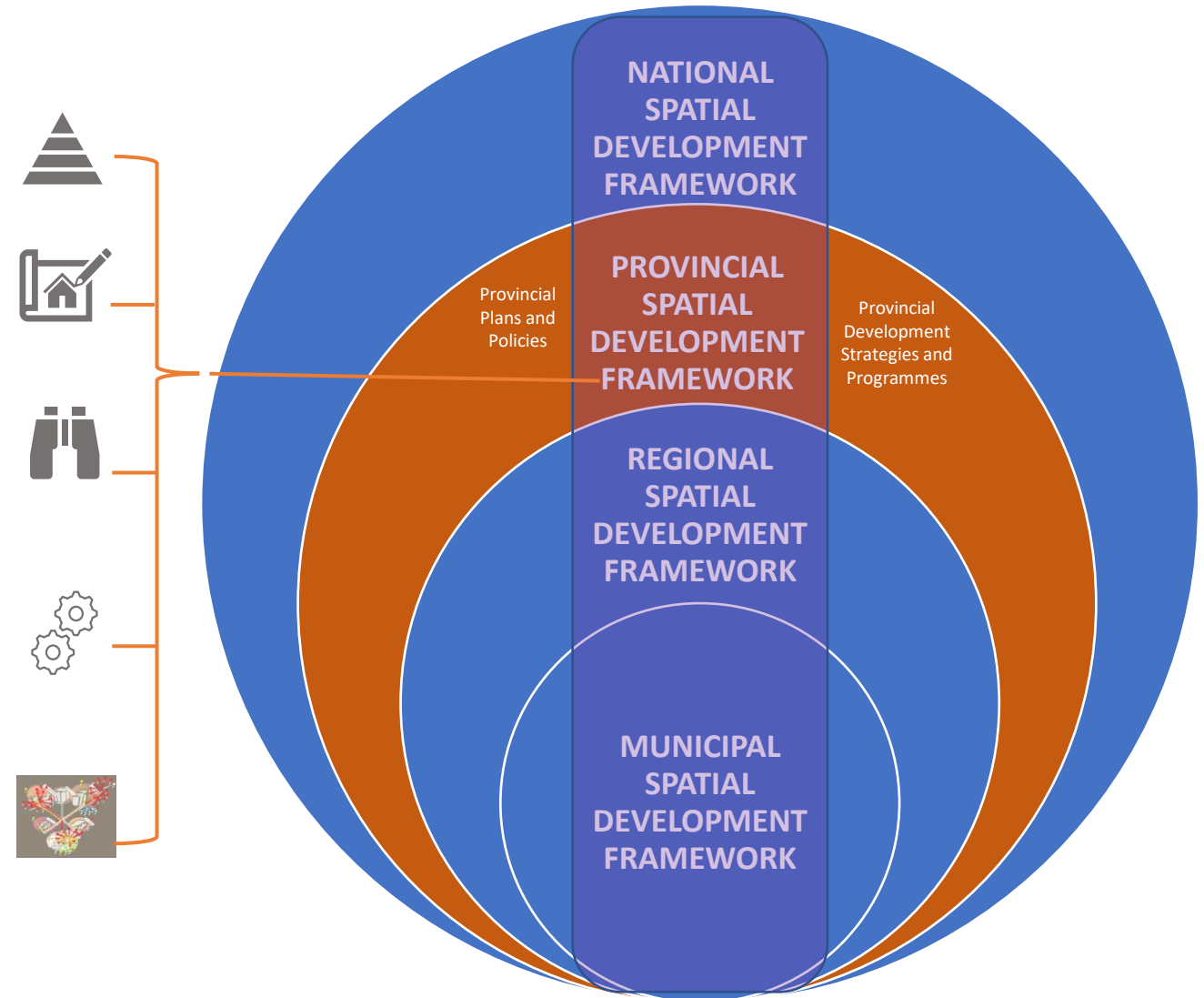
The SPLUMA introduces a hierarchical system of SDFs.

It provides for horizontal and vertical alignment spatial plans.

The PSDF will present a provincial spatial development vision and programme.

It will provide for an efficient and sustainable execution of provincial executive powers pertaining to land development and use.

It will address spatial issues and challenges facing KZN including colonial and apartheid spatial structure.



# PREPARATION AND LEGAL EFFECT OF THE PSDF

## WHY PSDF?

- **Section 15** of the SPLUMA requires the province to prepare and adopt a PSDF.
- KZN PSDF will coordinate, align and integrate:
  - provincial plans and development strategies with policies of national government (e.g. NSDF);
  - the plans, policies and development strategies of provincial departments; and
  - the plans, policies and development strategies of municipalities.
- It will address spatial challenges facing the province.
- Mobilise stakeholders around a shared spatial vision.

## LEGAL EFFECT OF THE PSDF

The legal effect of the Executive Council adopted PSDF is set out in **Section 17** of SPLUMA:

- The PSDF comes into operation upon approval by the Executive Council and publication in the Provincial Gazette.
- All provincial development plans, projects and programmes must be consistent with the provincial spatial development framework.
- Once adopted, the PSDF will be required to be reviewed by the Executive Council, at least every 5 years (Section 15.4).

# CONTENT OF PSDF

Section 16 of SPLUMA prescribes the following content of a Provincial SDF

a **spatial representation** of the land development policies, strategies and objectives of the province, which must include the province's growth and development strategy where applicable;

indicate the **desired and intended pattern of land use development** in the province, including the delineation of areas in which development in general or development of a particular type would not be appropriate;

coordinate and integrate the **spatial expression of the sectoral plans of provincial departments;**

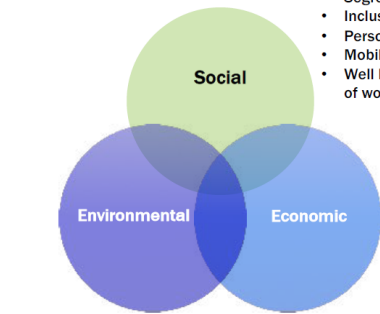
a framework for **coordinating municipal spatial development frameworks** with each other where they are contiguous.

**coordinate municipal SDFs with the provincial SDF** and any regional spatial development frameworks as they apply in the relevant province;

incorporate any spatial aspects of relevant **national development strategies and programmes** as they apply in the relevant province.

# GUIDING PRINCIPLES

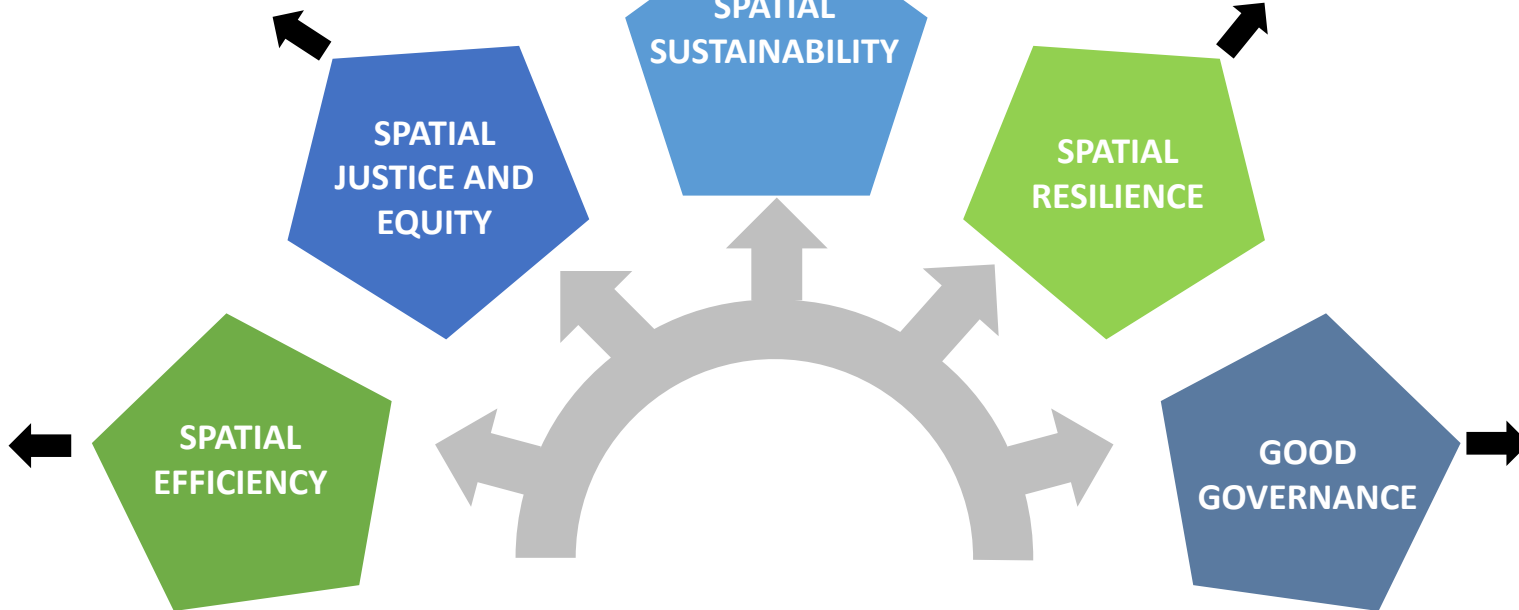
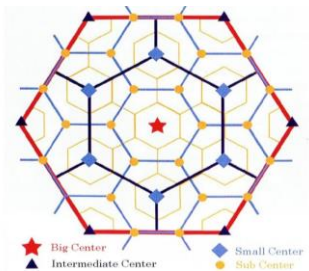
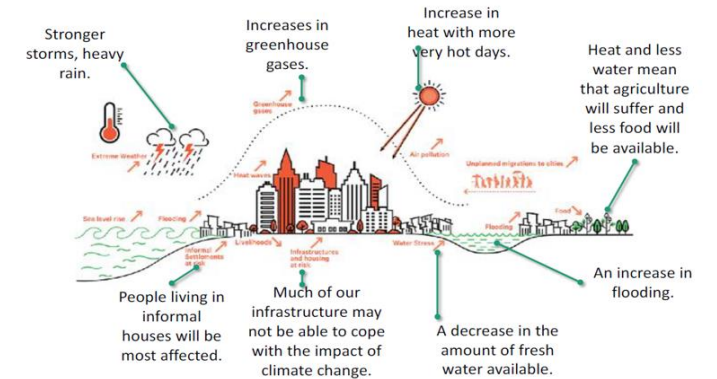
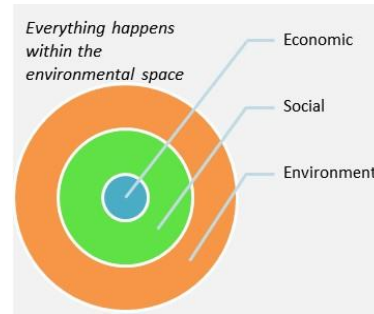
## Balancing social, economic and environmental aspects



- Segregation, Integration,
- Inclusive spaces
- Personal safety
- Mobility and basic services
- Well located integrated settlements close to places of work

- Access to resources such as land for production, housing as an investment or collateral for finance
- Proximity as a resource
- Space to conduct economic activity and create jobs
- Lowering the cost of doing business

- Mitigating and adapting to climate change
- Assessing risks to climate change
- Ensuring that vulnerable households are protected
- Quality living environments



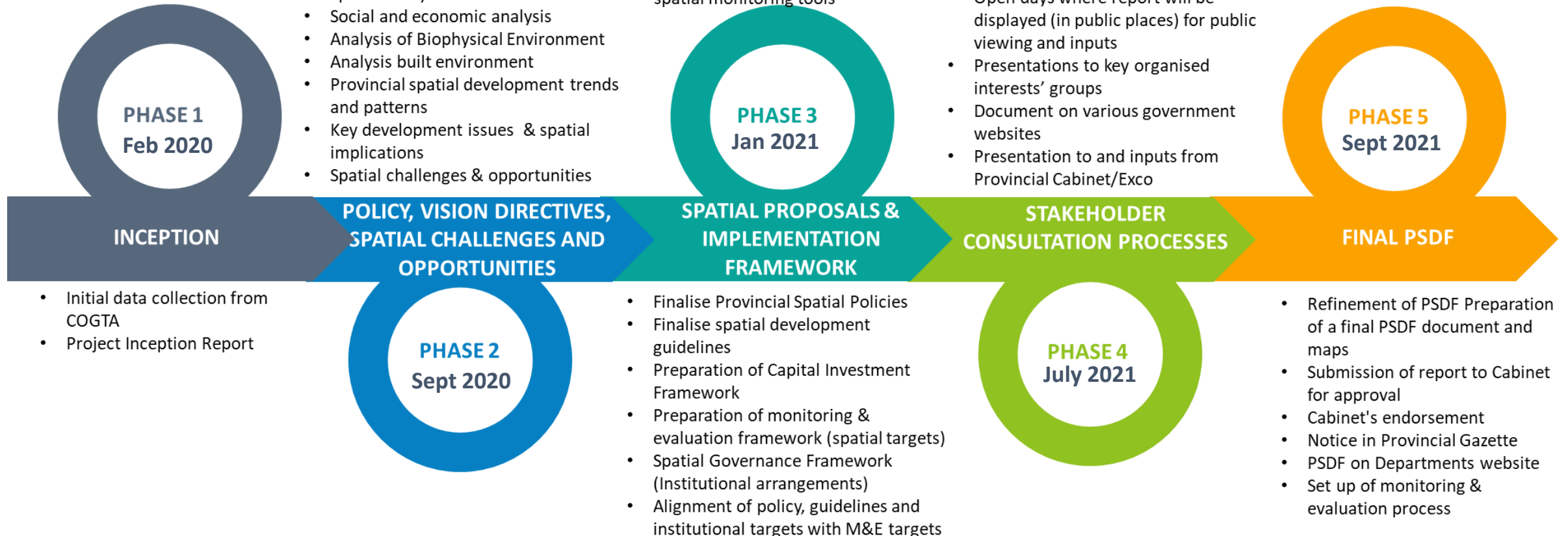


# PSDF APPROACH

- Legislative and policy context
- Formulate draft provincial spatial vision
- Formulate SMART PSDF objectives
- Monitoring & Evaluation (Baseline Review)
- Spatial analysis
- Social and economic analysis
- Analysis of Biophysical Environment
- Analysis built environment
- Provincial spatial development trends and patterns
- Key development issues & spatial implications
- Spatial challenges & opportunities

- Final draft vision and objectives
- Spatial concepts
- Spatial strategies and policies
- Preparation of Draft Consolidated PSDF
- Preparation of a Final Draft PSDF Report
- Monitoring & Evaluation- establish indicators and targets
- Monitoring & Evaluation- develop spatial monitoring tools

- Finalise Final Draft PSDF for public participation
- Publication of a notice on the Provincial Gazette and Media informing the public about the draft PSDF and inviting comments
- Public workshops with a range of stakeholders
- Open days where report will be displayed (in public places) for public viewing and inputs
- Presentations to key organised interests' groups
- Document on various government websites
- Presentation to and inputs from Provincial Cabinet/Exco



Organised and structured stakeholder engagement throughout the planning process

# PROPOSED STRUCTURE OF THE PSDF

**01**

## Policy Context And Vision Directives

- Policy And Legislative Context
- Summary and implications
- Towards A Provincial Spatial Vision

**02**

## Spatial Challenges And Opportunities

- Socio-economic trends and patterns
- Analysis of the Built Environment
- Analysis of the Biophysical Environment
- Cross Cutting Dimensions/concerns
- Synthesis of spatial issues, challenges and opportunities

**03**

## Spatial Proposals

- Spatial vision
- Conceptual Framework
- Scenario development
- Spatial development objectives
- Spatial strategies, proposals and policies

**04**

## Implementation Framework

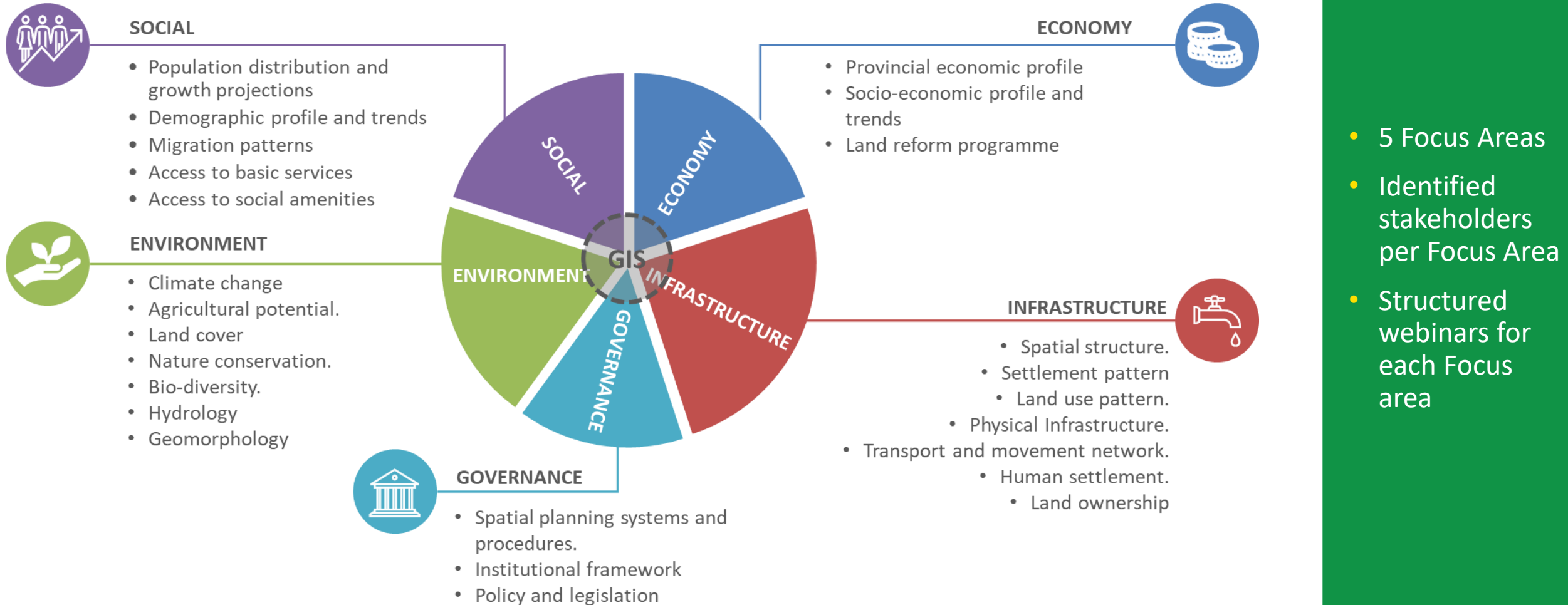
- Provincial spatial policies
- Spatial development guidelines
- Capital investment framework
- Institutional arrangements

**05**

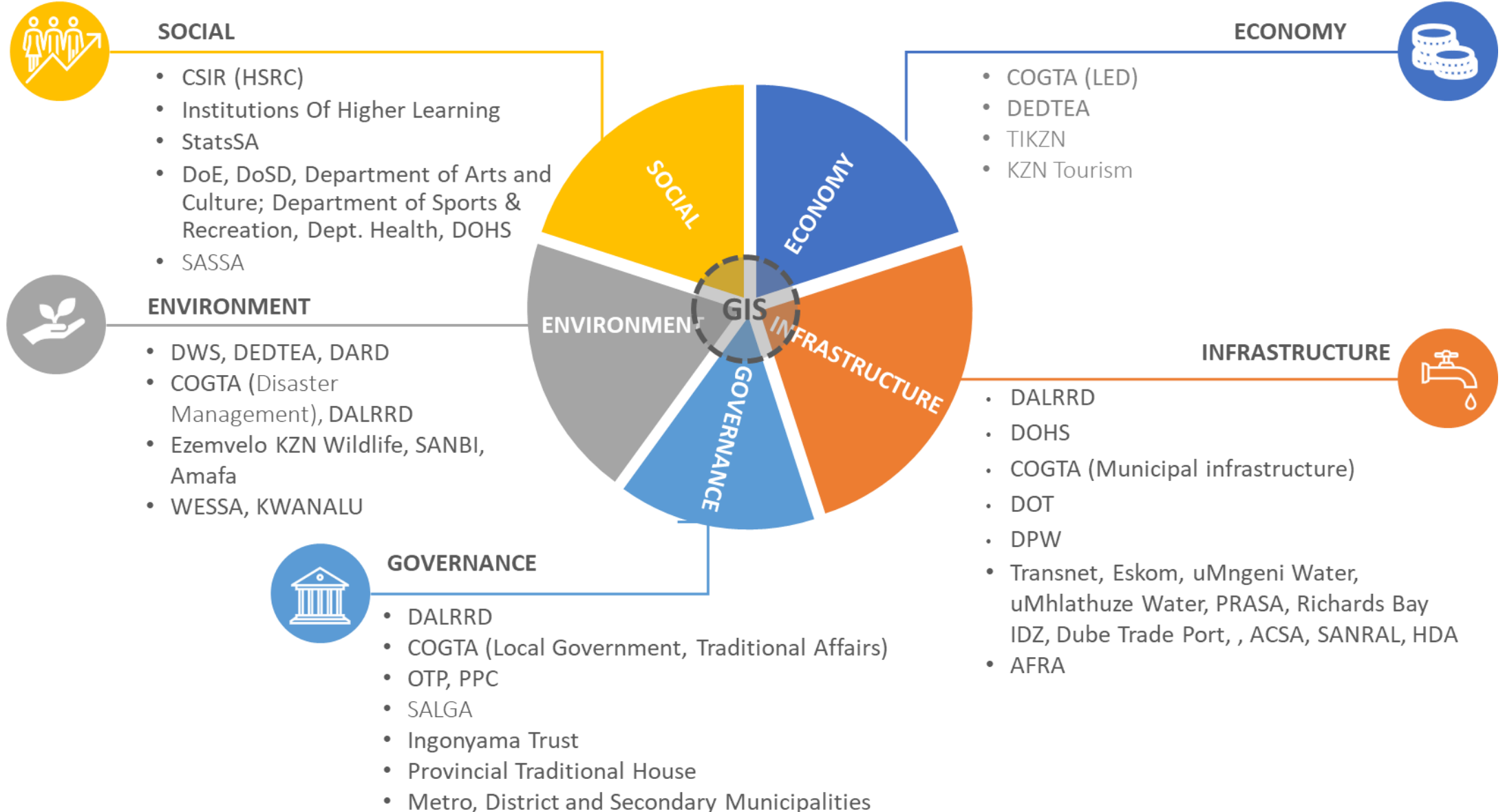
## Consolidated PSDF

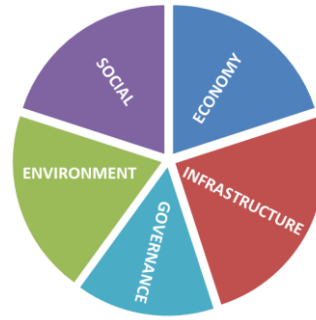
- Executive Summary
- Policy Directives
- Spatial Vision and objectives
- Synthesis of spatial issues, challenges and opportunities
- Spatial proposals
- Implementation Framework
- Monitoring and Evaluation system.

# STAKEHOLDER ENGAGEMENT APPROACH

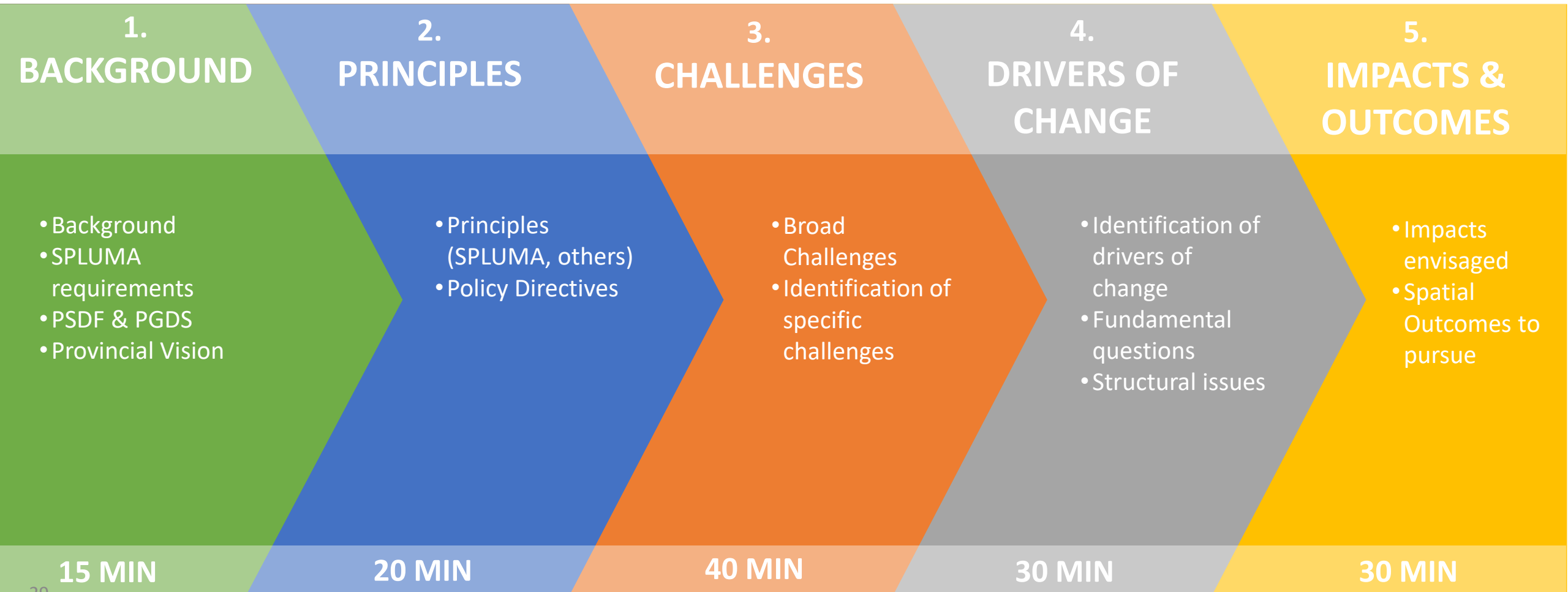


# IDENTIFIED STAKEHOLDERS PER FOCUS AREA





# WEBINAR STRUCTURE AND PROGRAM



# QUESTIONS AND ANSWERS

# WAY FORWARD

# SECTOR BASED WEBINARS

	Sector	Date	Time
1	Introductory	15-Jul-20	10:00-11:00
2	Social	16-Jul-20	10:00-12:00
3	Economic	17-Jul-20	10:00-12:00
4	Environment	21-Jul-20	10:00-12:00
5	Infrastructure	22-Jul-20	10:00-12:00
6	Governance	23-Jul-20	10:00-12:00
7	Feedback session to all role-players	29-Jul-20	10:00-12:00



# TO REGISTER AS AN INTERESTED AND AFFECTED PARTY, PLEASE VISIT THE FOLLOWING WEBSITES OR REGISTER VIA EMAIL

## PSDF

Please visit our website at  
<http://www.kzncogta.gov.za/psdf/>

Inputs and suggestions can be emailed to:

Email: [PSDF@kzncogta.gov.za](mailto:PSDF@kzncogta.gov.za)

Ms Amanda Zungu and Mr Sphelele  
Mhlongo Contact no: 033 355 6428

## PGDS

Please visit our website at  
[www.kznppc.gov.za](http://www.kznppc.gov.za)

Inputs and suggestions can be emailed to:

Sithembile Myeza  
[sithembile.myeza@kznpremier.gov.za](mailto:sithembile.myeza@kznpremier.gov.za)

Dawn Dorning  
[dawn.dorning@kznpremier.gov.za](mailto:dawn.dorning@kznpremier.gov.za)

**THANK YOU**

**GROWING  
KWAZULU-NATAL  
TOGETHER**