



**KWAZULU-NATAL**  
PROVINCIAL GOVERNMENT  
REPUBLIC OF SOUTH AFRICA



# KWAZULU-NATAL PROVINCIAL SPATIAL DEVELOPMENT FRAMEWORK (PSDF)

# KWAZULU-NATAL PROVINCIAL GROWTH AND DEVELOPMENT STRATEGY (PGDS)

23 JULY 2020

## SECTORAL THEMED WEBINARS: GOVERNANCE

GROWING KWAZULU-NATAL TOGETHER

# PSDF GOVERNANCE OUTCOMES WEBINAR

## AGENDA

1. Welcome and Opening Remarks (Mr. Mzimkulu Msiwa )
2. Purpose and Participation (Mr. Riaan Thomson)
3. Background to the PSDF (Mr. Sibongiseni Maseko)
4. Governance Issues (Mr. Riaan Thomson)
5. Stakeholder Inputs (Mr. Sibongiseni Maseko)
6. The Way Forward (Mrs. Riaan Thomson)
7. Closing Remarks (Mr. Mzimkulu Msiwa )



**KWAZULU-NATAL PROVINCE**

OFFICE OF THE PREMIER  
REPUBLIC OF SOUTH AFRICA



# WELCOME AND OPENING REMARKS

**MR. MZIMKULU MSIWA**

GROWING KWAZULU-NATAL TOGETHER



**The structure and form of settlements continue to significantly aggravate the dominant social problems of poverty, inequality and unemployment.**



**KWAZULU-NATAL PROVINCE**

OFFICE OF THE PREMIER  
REPUBLIC OF SOUTH AFRICA

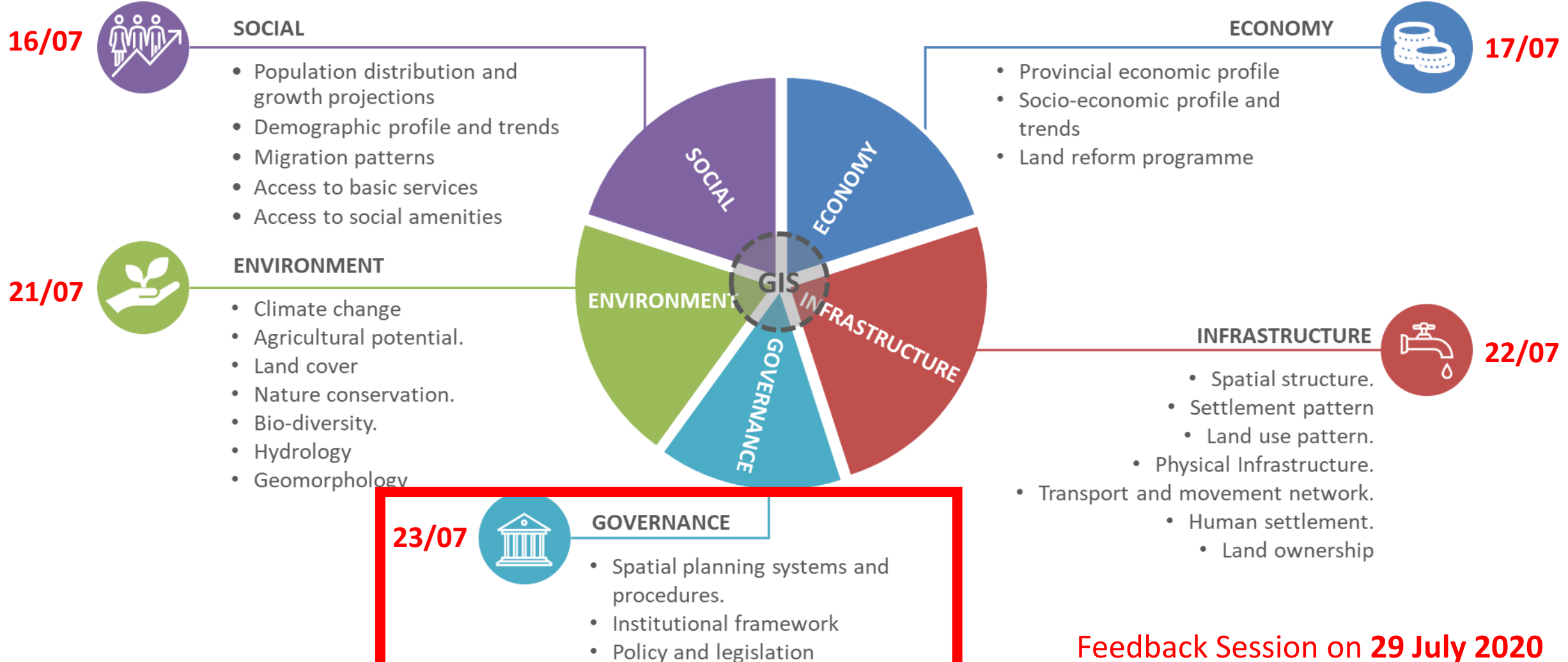


# PURPOSE OF THE MEETING AND PARTICIPATION

## MR. RIAAN THOMSON

GROWING KWAZULU-NATAL TOGETHER

# PSDF INITIAL SECTORAL WEBINARS



**Feedback Session on 29 July 2020**

# PURPOSE OF THE MEETING




1. To **introduce** the PSDF process to sectoral stakeholders.
  
2. To **obtain inputs** from Stakeholders:
  1. Identify additional **roleplayers and sources of information** towards the Status Quo analysis.
  2. Share insights into specific **issues experienced and/or solutions required**.
  3. Express what the **PSDF could include** in order to assist in addressing these.
  
3. To ultimately assist in **defining the problem** statement and contribute **towards the spatial development vision** which will guide the formulation of the PSDF.

# PANELISTS

- Mr. Mzimkulu Msiwa (Provincial Planning Commission Chair)
- Mrs. Martie Milne (Office of the Premier)
- Mrs. Lisa del Grande (CoGTA)
- Mrs. Mandisa Zungu (CoGTA)
- Mrs. Amanda Zungu (CoGTA)
- Mr. Ivan Scholtz
- Mr. Craig Rushton (CoGTA)
- Ms. Zethembiso Nyawo (CoGTA)
- Mr. Sibongiseni Maseko (Isibuko Team)
- Mr. Riaan Thomson (Isibuko Team)
- Mrs. Petronell Human (Isibuko Team)



# PARTICIPATING IN THE DISCUSSION

1. Meeting Chat Room 	2. Online Form Inputs 	3. Verbal inputs 
<p>Interact on the meeting chat and post any inputs on important issues or solutions to consider.</p> <p>Please remember to select to post to <b>Attendees and Panelists</b> in the chat.</p>	<p>Go to:</p> <p><b><a href="https://tinyurl.com/PSDF-Governance">https://tinyurl.com/PSDF-Governance</a></b></p> <p>Six open questions relating to the identification of economic development issues as well as options and opportunities.</p> <p>Form is already open and will remain open for multiple inputs until 28 July 2020.</p>	<ol style="list-style-type: none"><li>1. Please raise your hand.</li><li>2. The host will allow you to talk.</li><li><b>3. Unmute</b> your device.</li><li>4. Please make concise and specific inputs on the identification of issues or opportunities to pursue as part of the PGDS / PSDF processes.</li></ol>

Email: [PSDF@kzncogta.gov.za](mailto:PSDF@kzncogta.gov.za)

<http://www.kzncogta.gov.za/psdf/>



**KWAZULU-NATAL PROVINCE**

OFFICE OF THE PREMIER  
REPUBLIC OF SOUTH AFRICA



# PROVINCIAL SPATIAL DEVELOPMENT FRAMEWORK (PSDF)

**MR. SIBONGISENI MASEKO**

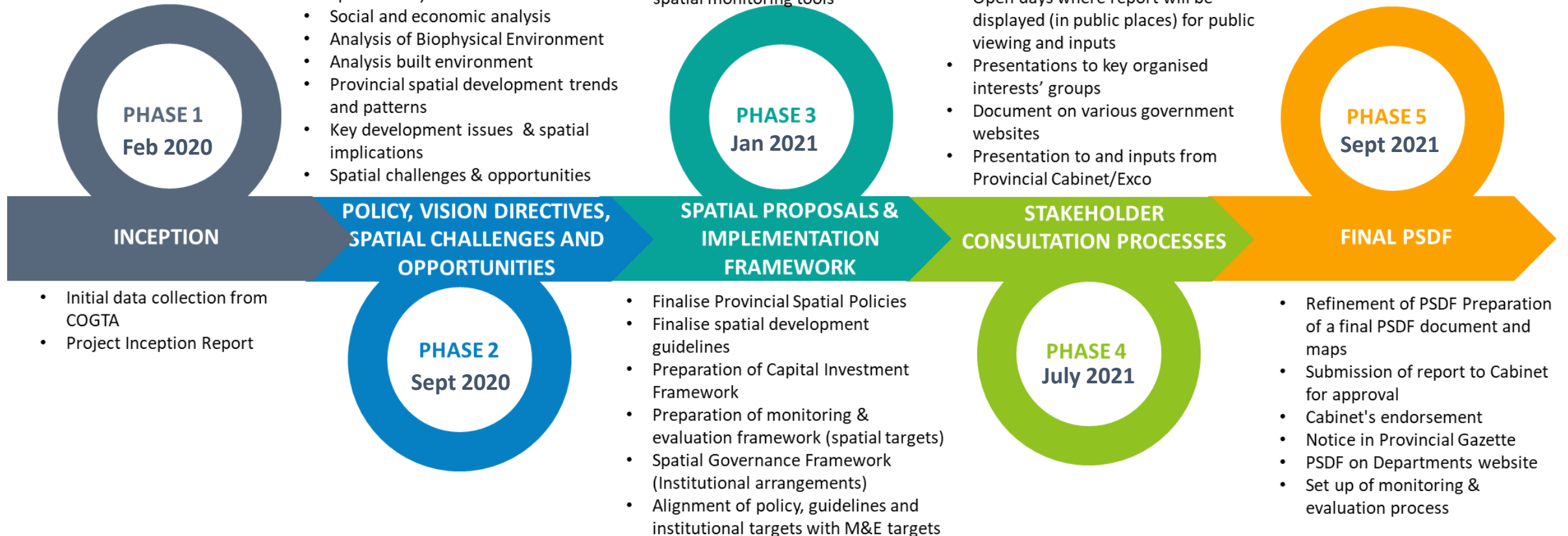
GROWING KWAZULU-NATAL TOGETHER

# PSDF APPROACH

- Legislative and policy context
- Formulate draft provincial spatial vision
- Formulate SMART PSDF objectives
- Monitoring & Evaluation (Baseline Review)
- Spatial analysis
- Social and economic analysis
- Analysis of Biophysical Environment
- Analysis built environment
- Provincial spatial development trends and patterns
- Key development issues & spatial implications
- Spatial challenges & opportunities

- Final draft vision and objectives
- Spatial concepts
- Spatial strategies and policies
- Preparation of Draft Consolidated PSDF
- Preparation of a Final Draft PSDF Report
- Monitoring & Evaluation- establish indicators and targets
- Monitoring & Evaluation- develop spatial monitoring tools

- Finalise Final Draft PSDF for public participation
- Publication of a notice on the Provincial Gazette and Media informing the public about the draft PSDF and inviting comments
- Public workshops with a range of stakeholders
- Open days where report will be displayed (in public places) for public viewing and inputs
- Presentations to key organised interests' groups
- Document on various government websites
- Presentation to and inputs from Provincial Cabinet/Exco



Organised and structured stakeholder engagement throughout the planning process



**KWAZULU-NATAL PROVINCE**

OFFICE OF THE PREMIER  
REPUBLIC OF SOUTH AFRICA



# IDENTIFICATION OF PROVINCIAL GOVERNANCE ISSUES

**MR. RIAAN THOMSON**

GROWING KWAZULU-NATAL TOGETHER



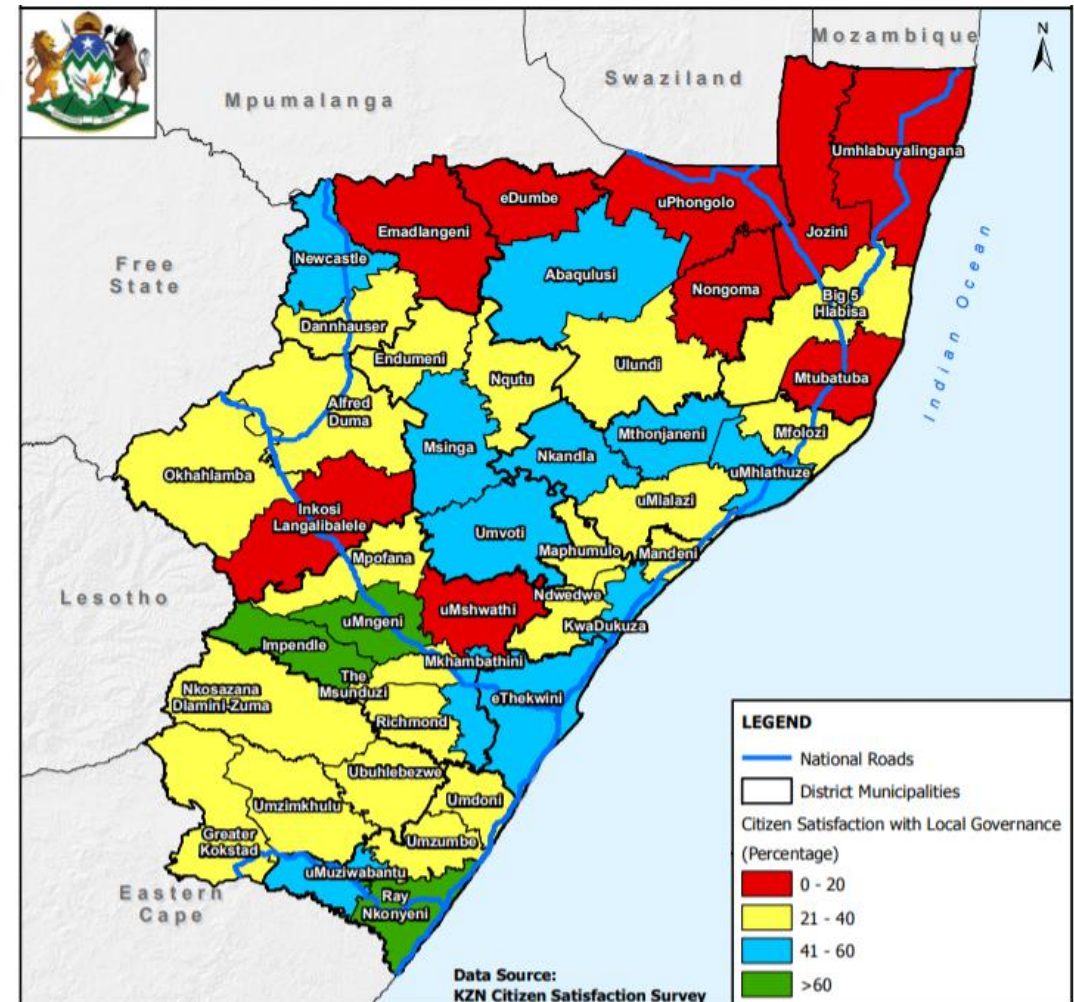
# 1. GOVERNANCE IMPACTS DEVELOPMENT

- Governance has a **transversal impact** in all sectors in spatial development.
- Governance **determines the impact of planning.**
- Governance should therefore be aimed at **impactful development.**
- Lack of Governance leads to:
  - Misalignment,
  - Silo Mentality,
  - Reactionary planning,
  - Slow Decision Making,
  - Entrenches Poverty,



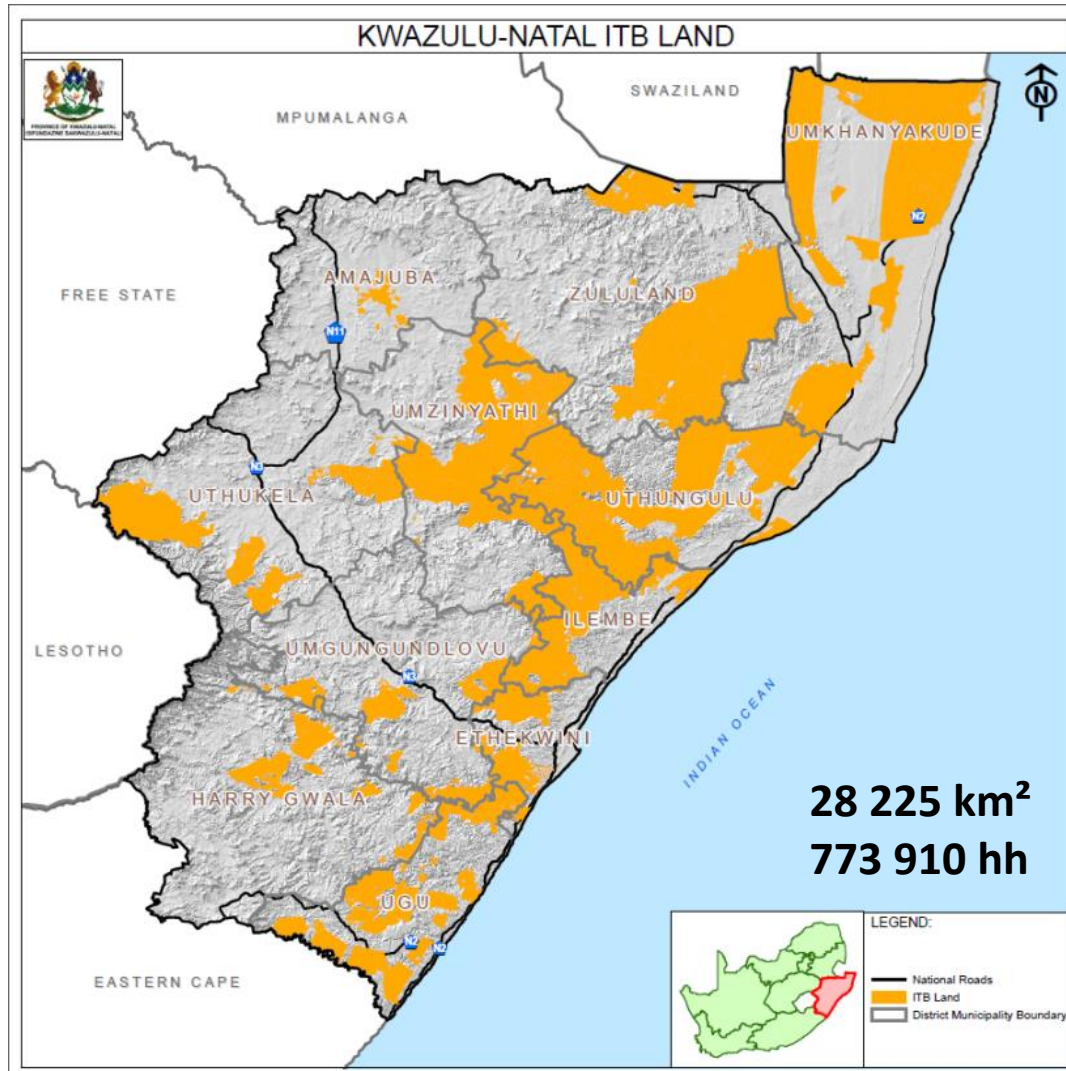
# 1. GOVERNANCE IMPACTS DEVELOPMENT...

- **Spatial variation** in governance across the province.
- **Reflected in Audit Reports, Vacancy Rates, Capacity Assessments and Citizen Satisfaction Surveys.**
- Areas which need strongest governance often have the least capacity and lowest levels of Governance.



Citizen Satisfaction with Local Government, 2018

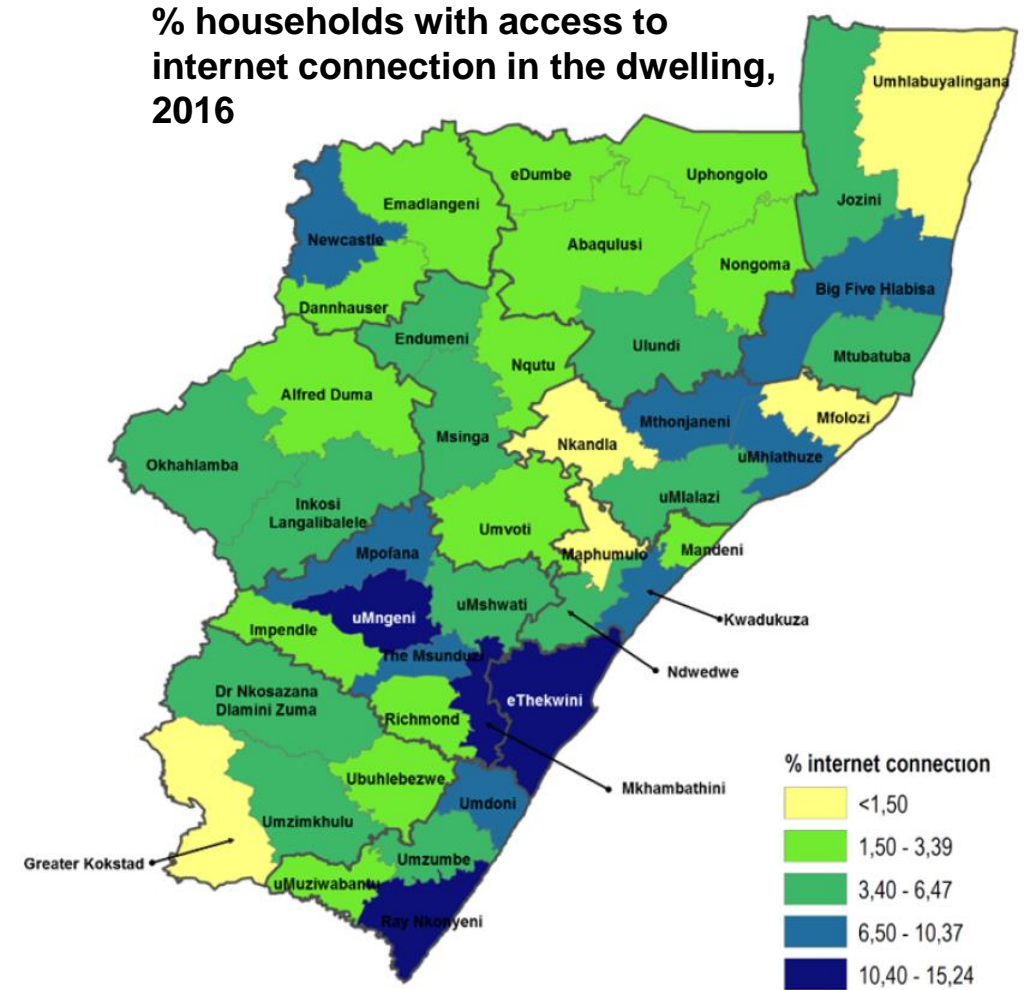
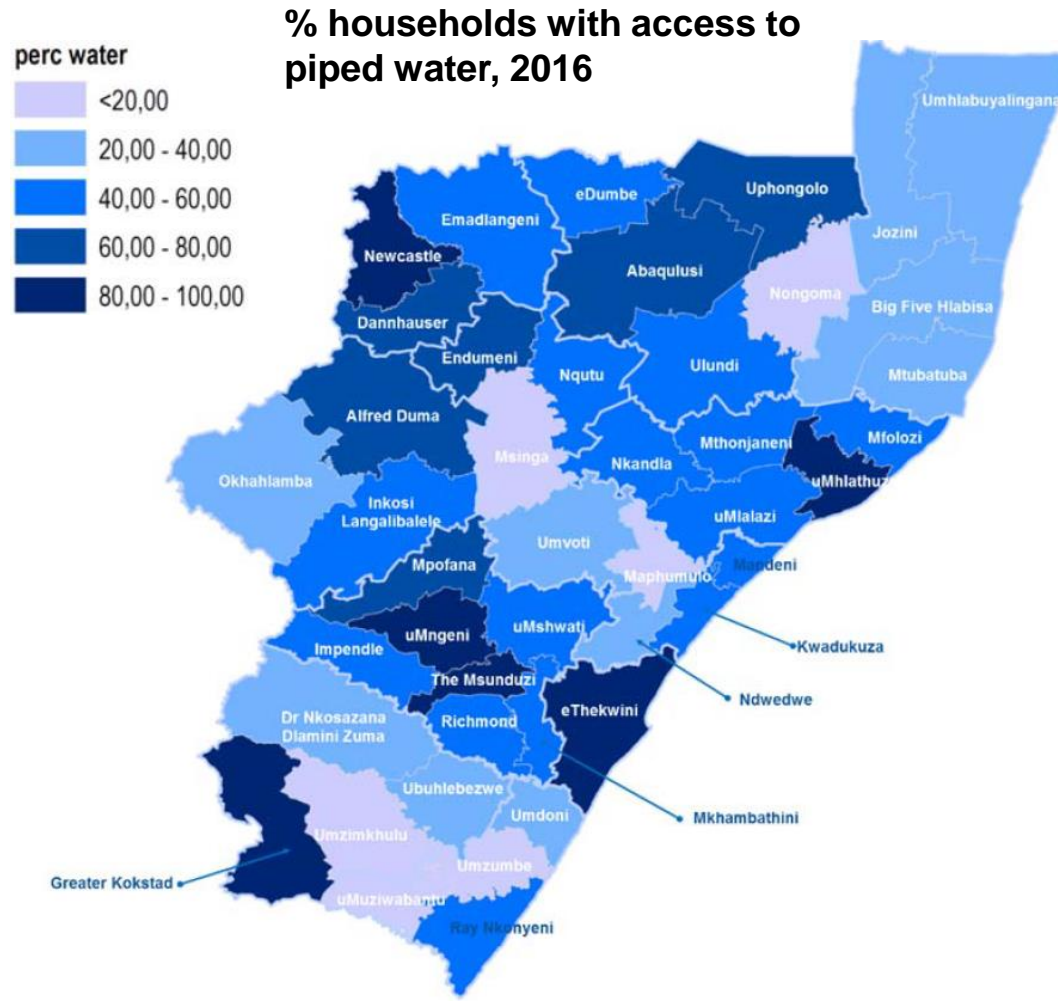
## 2. GOVERNANCE DIFFER SPATIALLY...



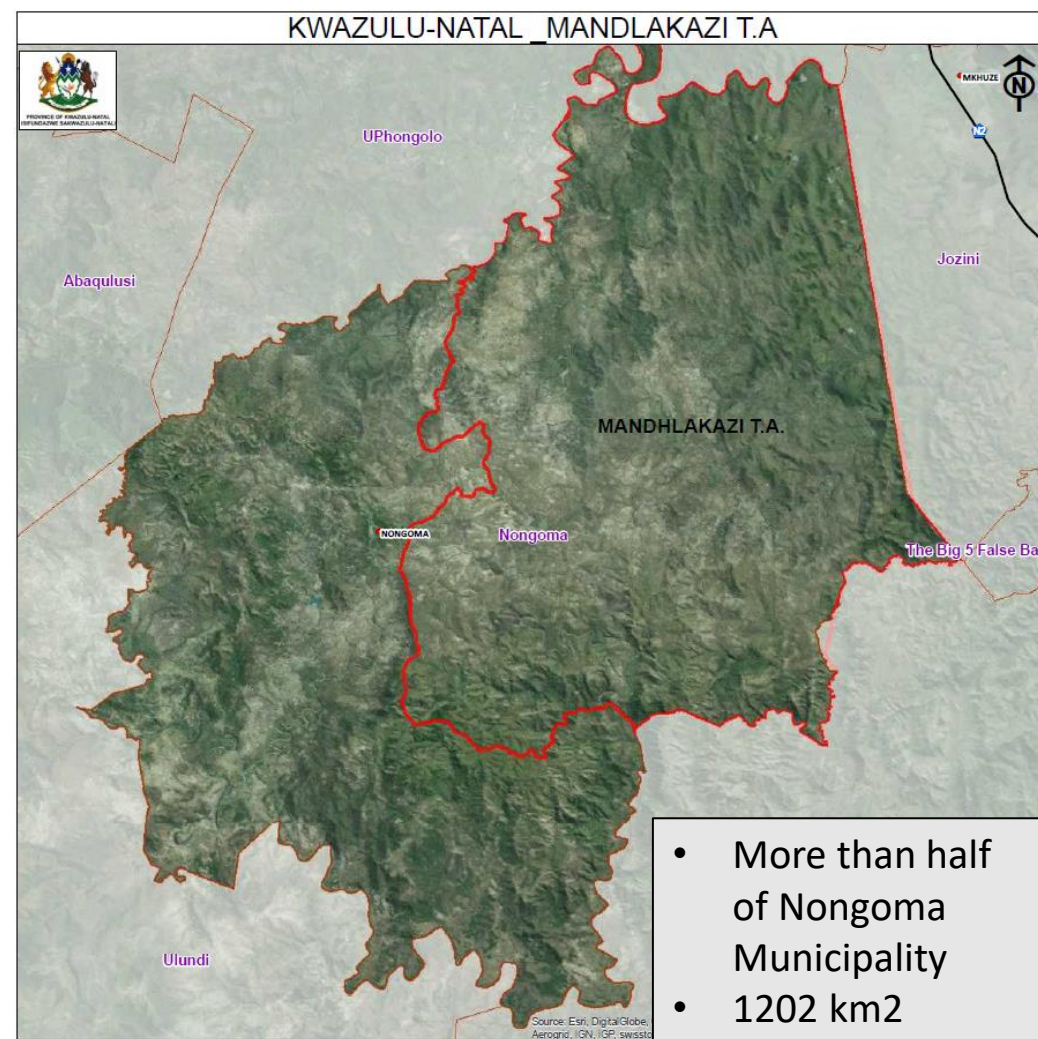
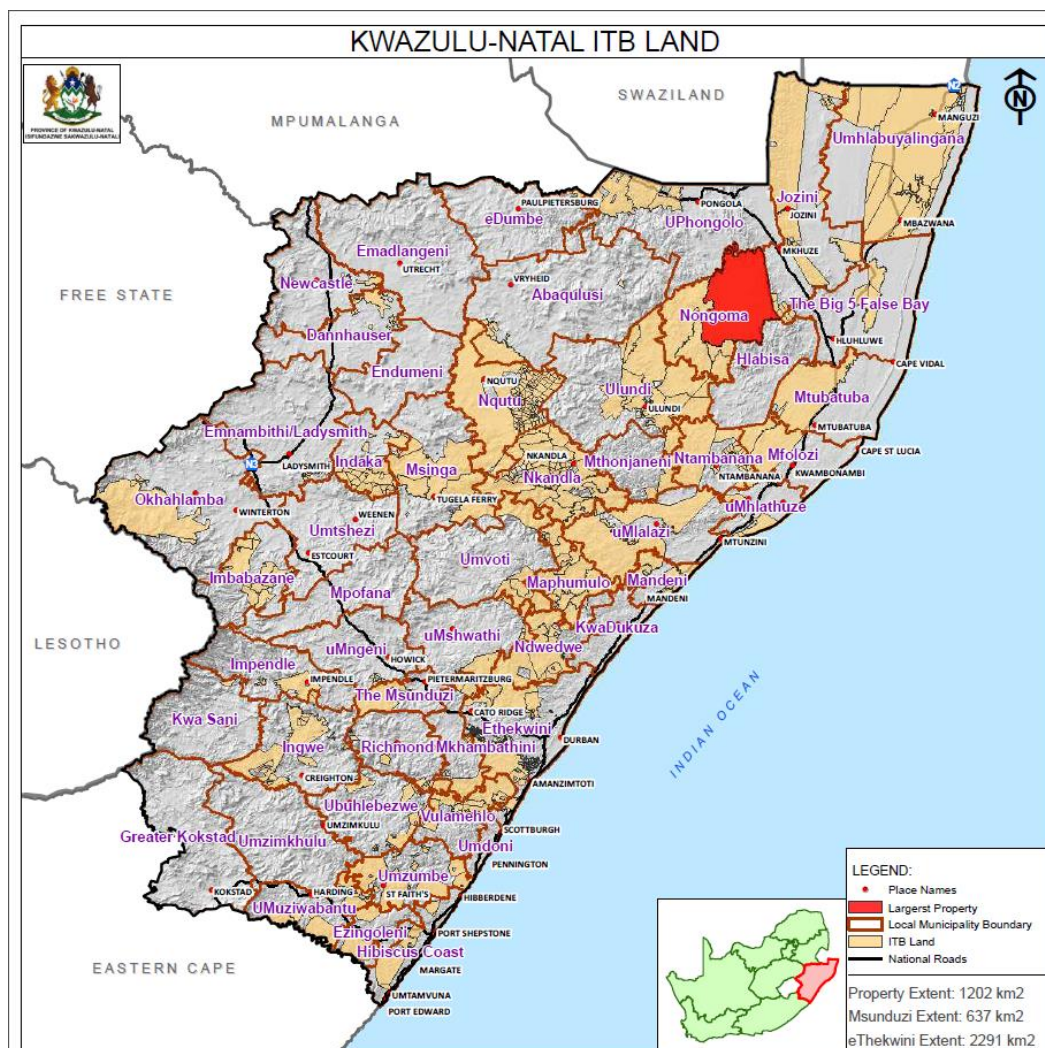
- Governance is affected by **Land Ownership**.
- **Concentration of poverty** on traditional communal areas.
- Impacts on **Municipality's Financial Ability**.
- **Dynamic relationship** between traditional and municipal governance.



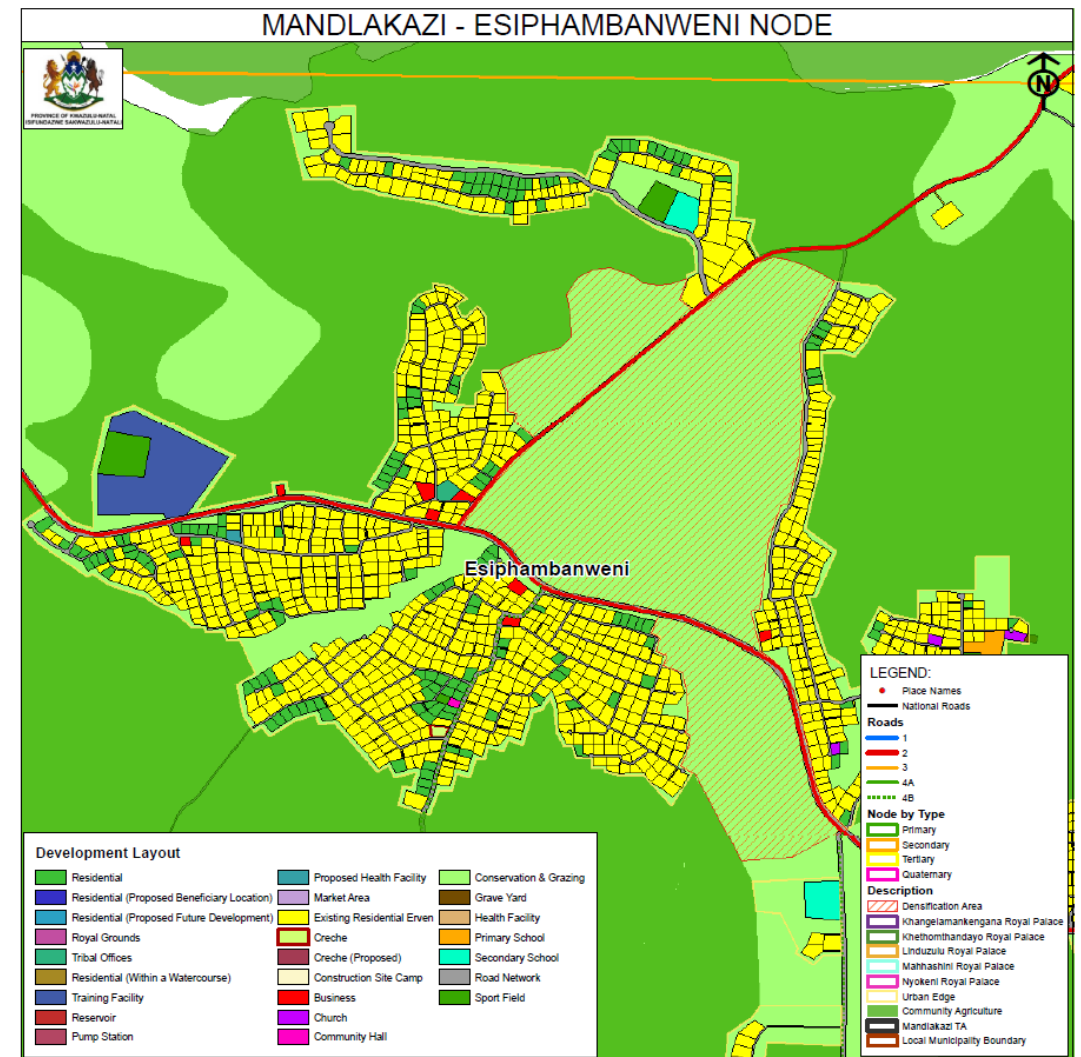
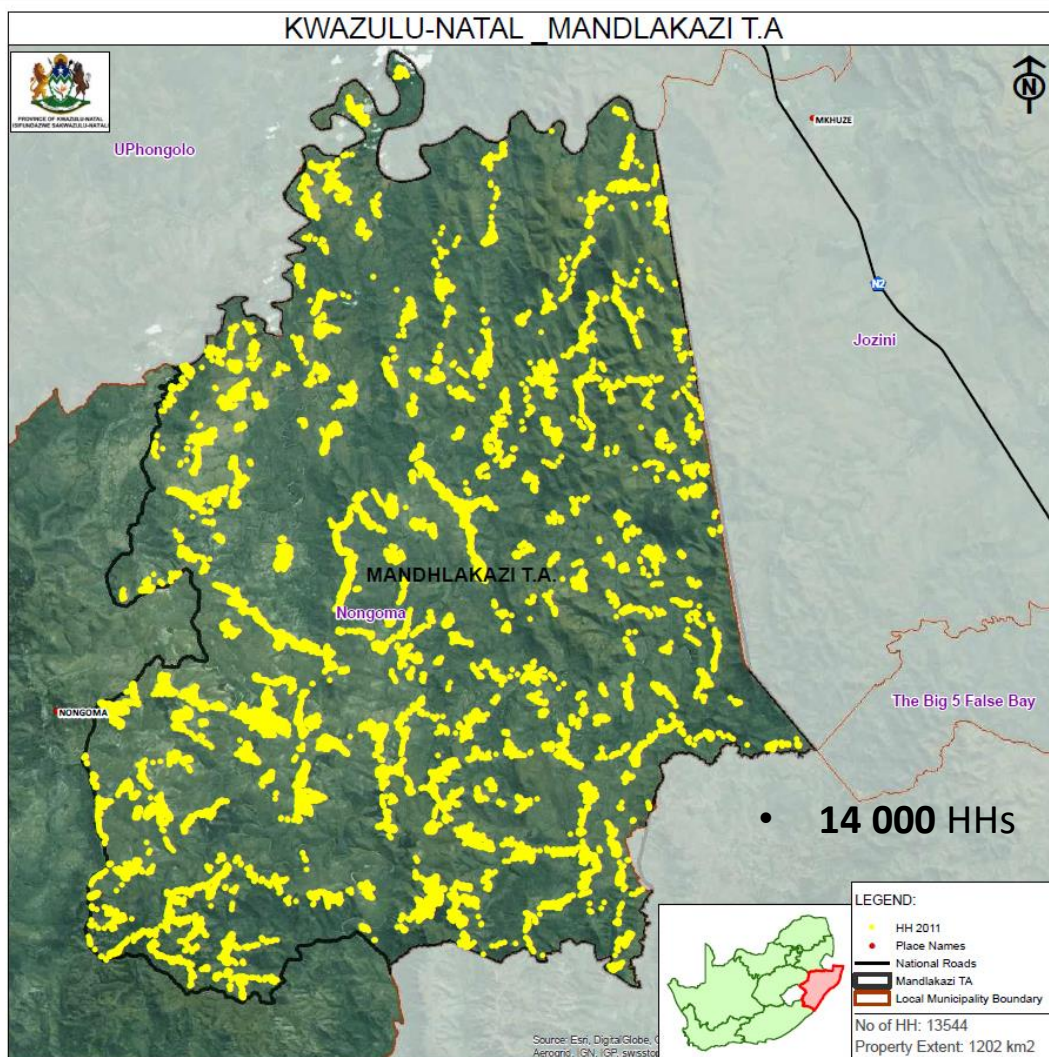
# 2. GOVERNANCE DIFFER SPATIALLY...



## 2. GOVERNANCE DIFFER SPATIALLY...

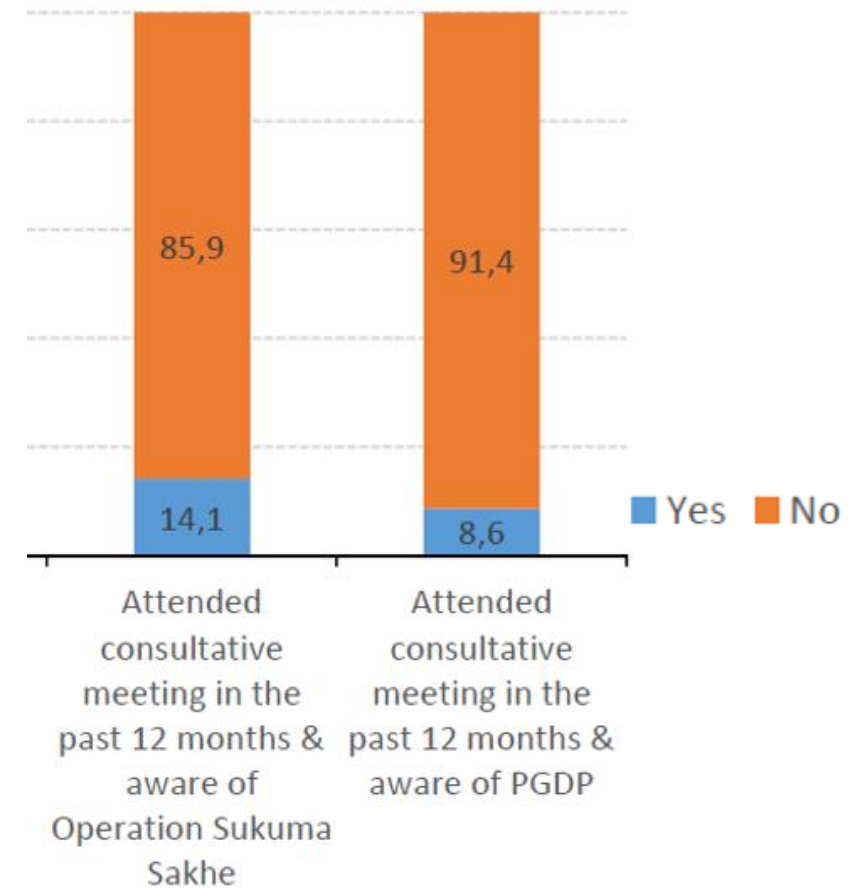


# 2. GOVERNANCE DIFFER SPATIALLY...



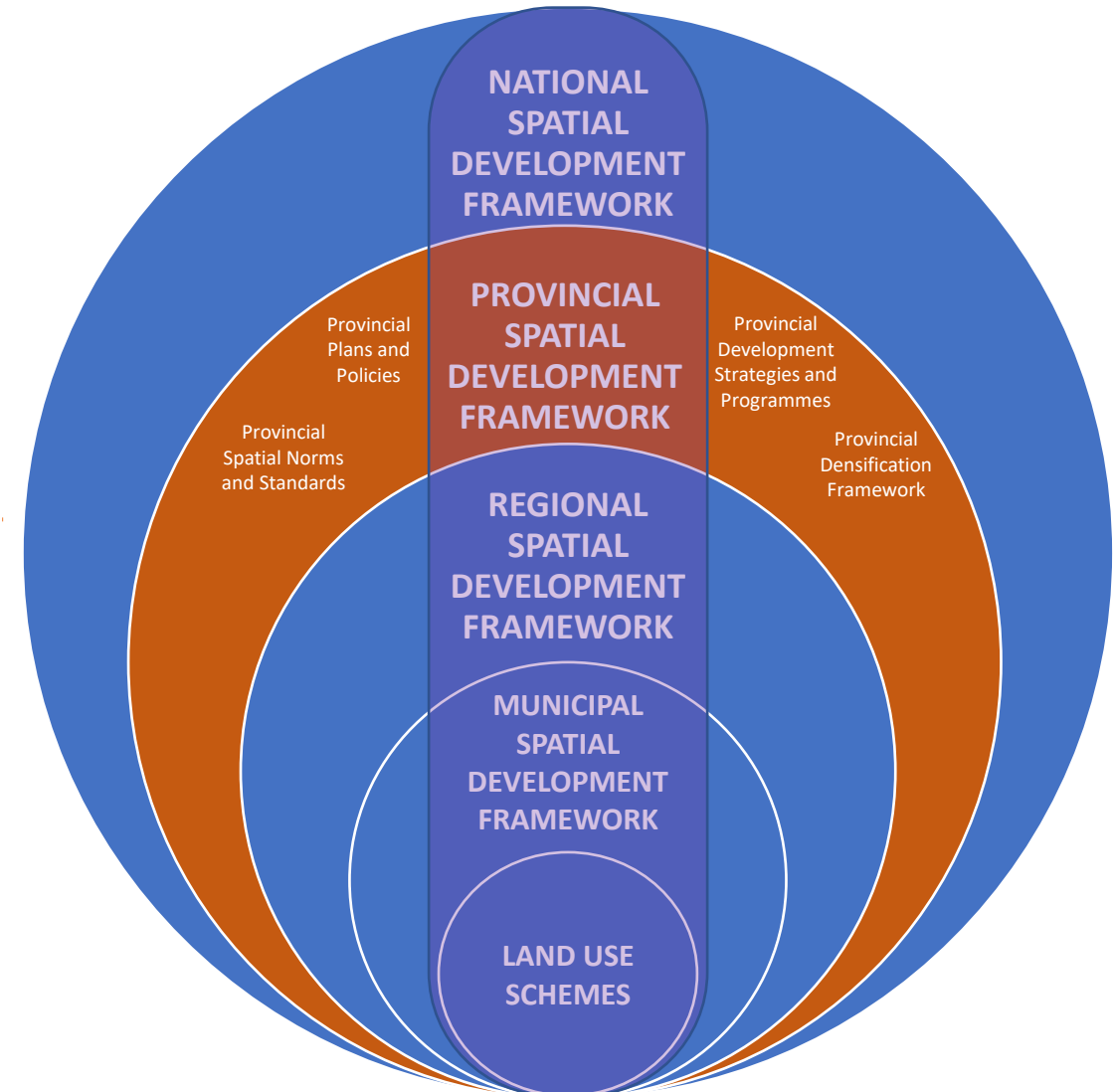
### 3. PARTICIPATORY PLANNING

- Citizens are generally disengaged in the planning process.
- SLUMA not accepted everywhere, particularly in certain traditional areas.
- Leads to dual management and participatory systems.
- Need to find basic directives for spatial planning.



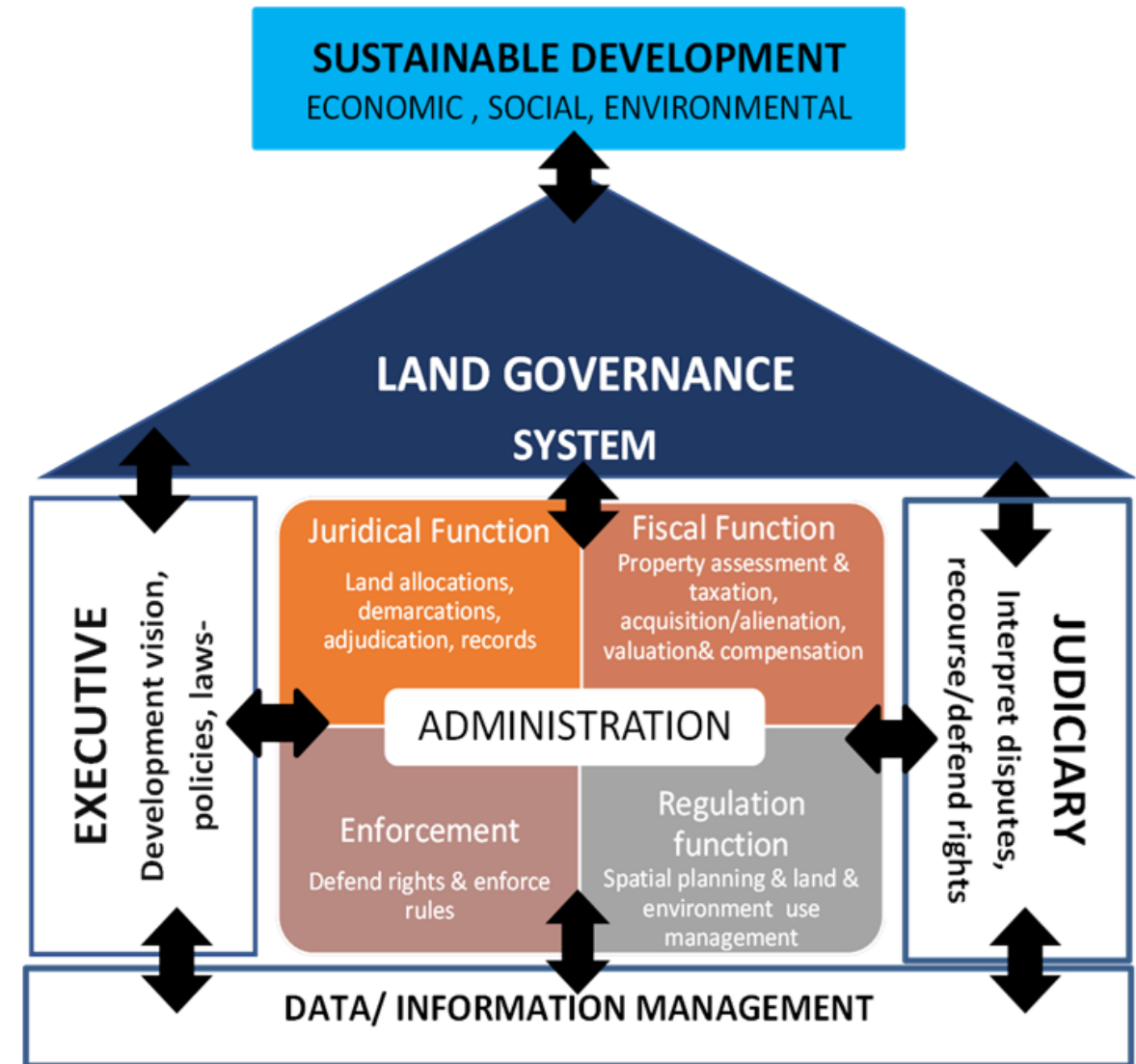
## 4. VERTICAL AND HORIZONTAL ALIGNMENT

- Vertical alignment is a **legislative requirement**.
- Need to **align powers and functions** within various tiers of government and service authorities.
- Does not properly occur due to:
  - Completeness,
  - Level of detail,
  - Will to align,
- IGR Framework exists but require **framework** for commonalities and **governance will**.



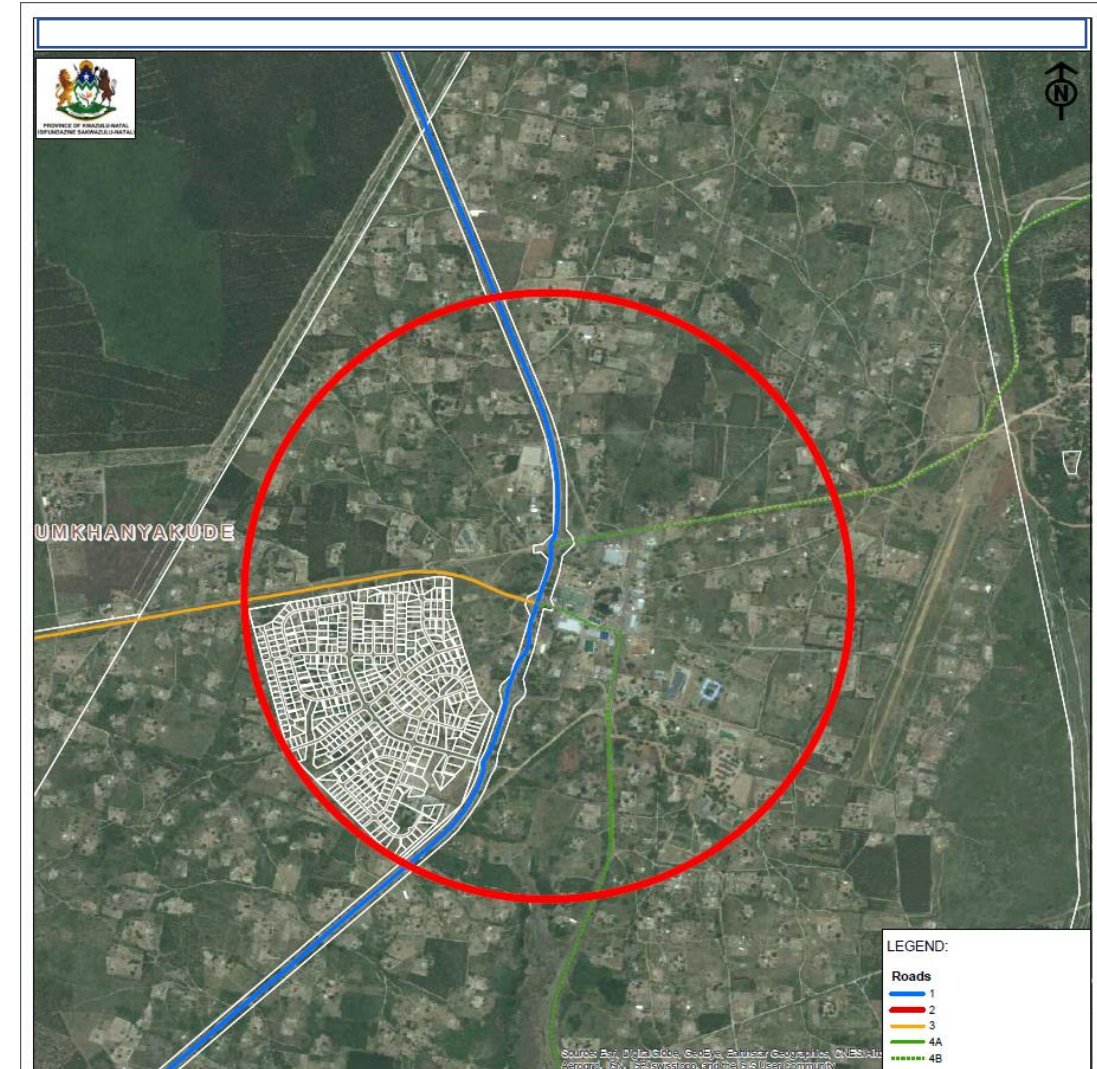
## 5. CO-ORDINATION & INTEGRATION

- Spatial Planning and Implementation required **co-ordination between various sectors**.
- **Budgeting cycles** require better alignment spatially and chronologically.
- Land Governance needs **integration between various roleplayers**.
- Current and emerging development and financial crisis will **require greater efficiency**.



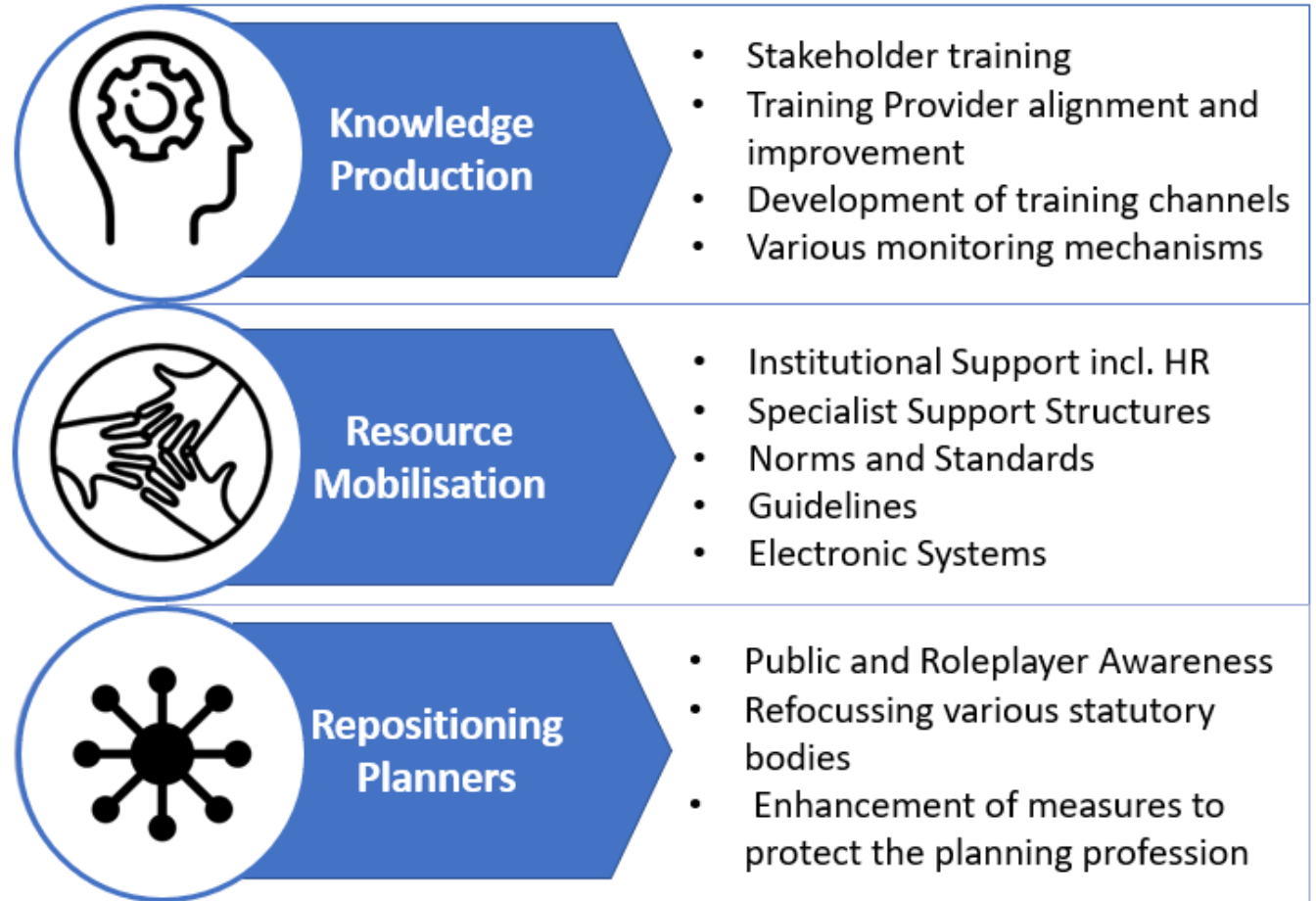
## 6. ORGANISATIONAL CAPACITY

- Review of SPLUMA Implementation found capacity problems at **national and provincial level as well as municipal level**, particularly at small rural municipalities.
- Organisational capacity expressed its **System, Human, Skills, Resource capacity**.
- PSDF and entire planning system could provide directives for better governance towards a co-ordinated system and toolset.
- Decision Making Tools:
  - Data and Information
  - Guidelines
  - Norms and Standards Available
  - Monitoring



## 6. ORGANISATIONAL CAPACITY...

- Draft SPLUMA Capacity Building Strategy prepared by DALRRD.
- Capacity constraints at various levels:
  - Finance,
  - Geo-context,
  - Support,
  - Mentoring,
  - Skills,
- Provides framework for capacity building which could be infused within PGDS & PSDF.





# 7. ENFORCEMENT

- Governance and capacity directly impacts enforcement
- Dual management system.
- Emerging new settlement patterns which are often unsustainable.



## 7. ENFORCEMENT...

- Luxury homes clustered
- No Formal Town Layout/  
Tenure
- No Municipal Rates



## 8. ACCOUNTABILITY

- “Outcomes led planning implies the clear articulation of desired impacts, practical measurement indices and coherent reporting” (MFMA, Circular on Rationalisation of Planning and Reporting Requirements)
- Very limited measurement of desired spatial outcomes making it difficult to measure governance and applying accountability.
- Need for a Spatial Performance Management system which could be monitored against intended outcomes.



# TOWARDS IMPROVED SPATIAL GOVERNANCE

How do we:

- express the needed outcomes from spatial planning?
- improve the alignment of planning and implementation?
- develop governance capabilities in rural / impoverished areas?
- Integrate the traditional and municipal planning systems?
- cut through a silo mentality?
- support better and faster decision making?
- monitor the correlation between governance and impact?



**KWAZULU-NATAL PROVINCE**

OFFICE OF THE PREMIER  
REPUBLIC OF SOUTH AFRICA



# WAY FORWARD

<https://tinyurl.com/PSDF-Governance>

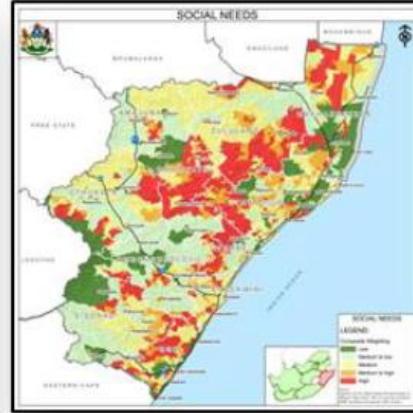
GROWING KWAZULU-NATAL TOGETHER



**COMPOSITE ENVIRONMENTAL SENSITIVITY**



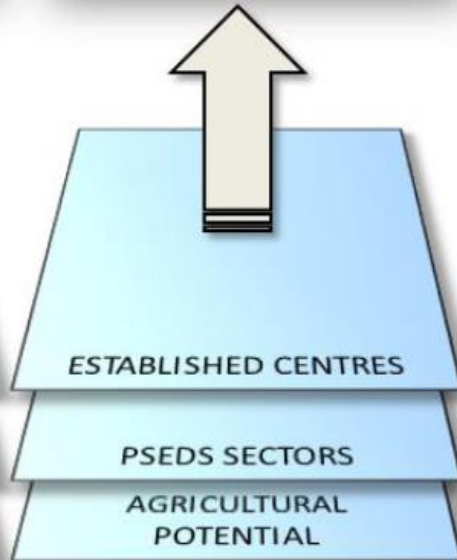
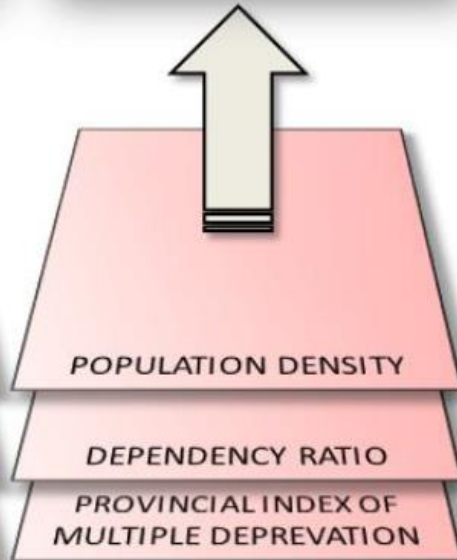
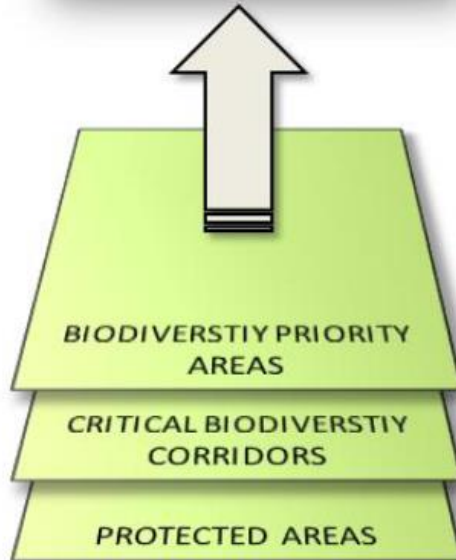
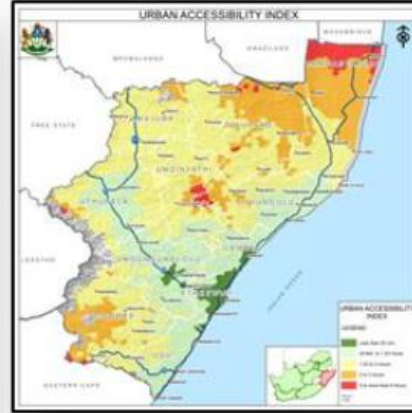
**COMPOSITE SOCIAL NEEDS**



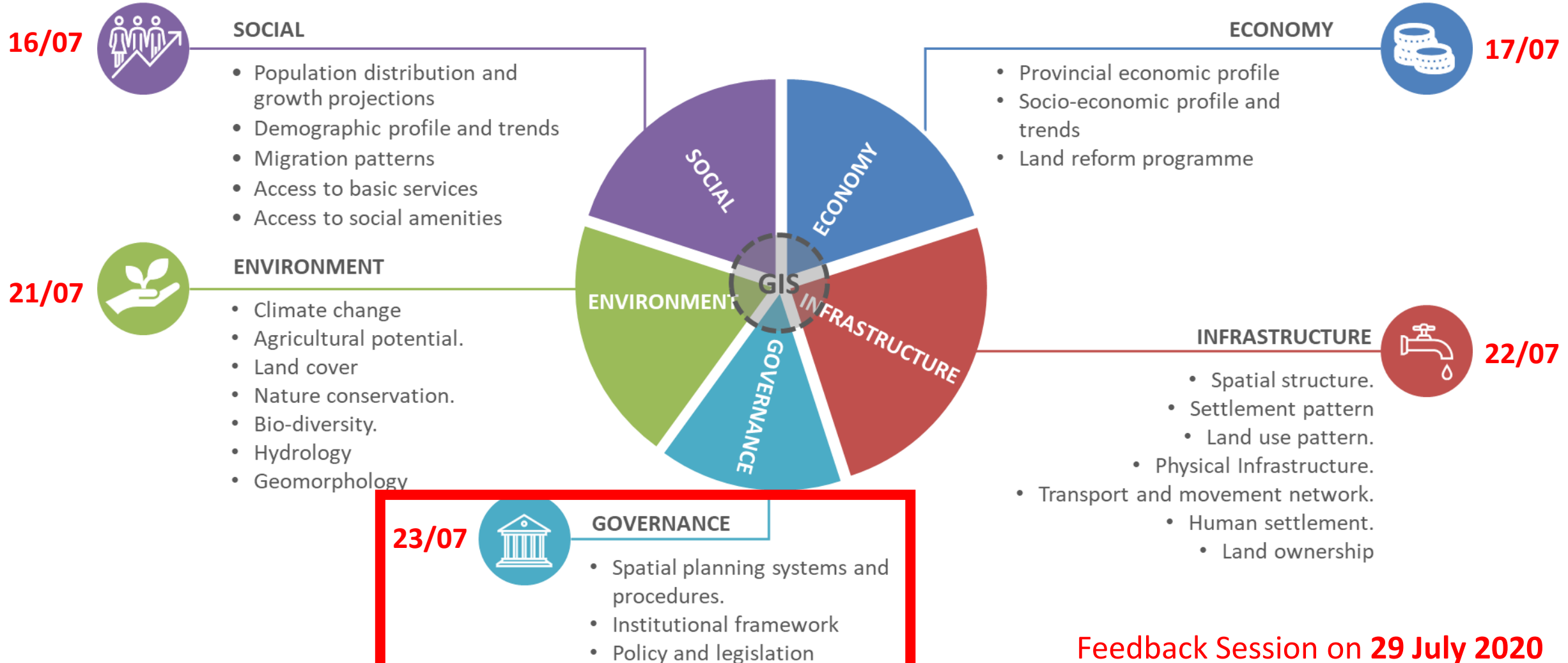
**COMPOSITE ECONOMIC POTENTIAL**



**COMPOSITE ACCESSIBILITY**



# PSDF INITIAL SECTORAL WEBINARS



**Feedback Session on 29 July 2020**

TO REGISTER AS AN INTERESTED AND AFFECTED PARTY, PLEASE VISIT THE  
FOLLOWING WEBSITES OR REGISTER VIA EMAIL

## PSDF

Please visit our website at  
<http://www.kzncogta.gov.za/psdf/>

Inputs and suggestions can be emailed to:  
Email: [PSDF@kzncogta.gov.za](mailto:PSDF@kzncogta.gov.za)

Ms Amanda Zungu and Mr Sphelele Mhlongo  
Contact no: 033 355 6428

<https://tinyurl.com/PSDF-Governance>

## PGDS

Please visit our website at  
[www.kznppc.gov.za](http://www.kznppc.gov.za)

Inputs and suggestions can be emailed to:

Sithembile Myeza  
[sithembile.myeza@kznpremier.gov.za](mailto:sithembile.myeza@kznpremier.gov.za)

Dawn Dorning  
[dawn.dorning@kznpremier.gov.za](mailto:dawn.dorning@kznpremier.gov.za)



# CLOSING REMARKS



# THANK YOU