



cogta

Department:
Cooperative Governance and Traditional Affairs
PROVINCE OF KWAZULU-NATAL



DIRECTORATE LAND USE MANAGEMENT

SPLUMA FORUM

PDMC, MKONDENI

24 JUNE 2016

TOGETHER WE HAVE MADE KZN A BETTER PROVINCE TO LIVE IN, TOGETHER WE WILL MOVE SOUTH AFRICA FORWARD 1



cogta

Department:
Cooperative Governance and Traditional Affairs
PROVINCE OF KWAZULU-NATAL

PRESENTATION OUTLINE

- 1. NORMS AND STANDARDS: PURPOSE**
- 2. LEGISLATIVE MANDATE**
- 3. FOCUS AREAS**
- 4. NORMS AND STANDARDS DEVELOPMENT PROCESS**
- 5. CURRENT PROJECTS**
- 6. COGTA TEAM**

BACK TO BASICS: SERVING OUR COMMUNITIES BETTER





cogta

Department:
Cooperative Governance and Traditional Affairs
PROVINCE OF KWAZULU-NATAL

NORMS AND STANDARDS

PURPOSE:

The main purpose of provincial planning and development norms and standards is to guide municipal decision-making in relation to land use and planning.

Norms:

Are based on what is common practices, local knowledge, acceptable behaviour etc. e.g. Imizi need to allow for mixed traditional uses within a homestead

Standards:

Deals with minimum sectoral and technical considerations such as free basic services, environment, health, education etc.



cogta

Department:
Cooperative Governance and Traditional Affairs
PROVINCE OF KWAZULU-NATAL

LEGISLATIVE MANDATES

Act 6 of 2008, Act 16 of 2013

KZNPDA Legislative Mandate:

Section 135 of the KZNPDA charges the relevant MEC to preside upon the establishment of norms and standards for planning regulation in the province.

SPLUMA Mandate:

At a National level SPLUMA requires the relevant Minister to prescribe norms and standards for land use management and land development.



cogta

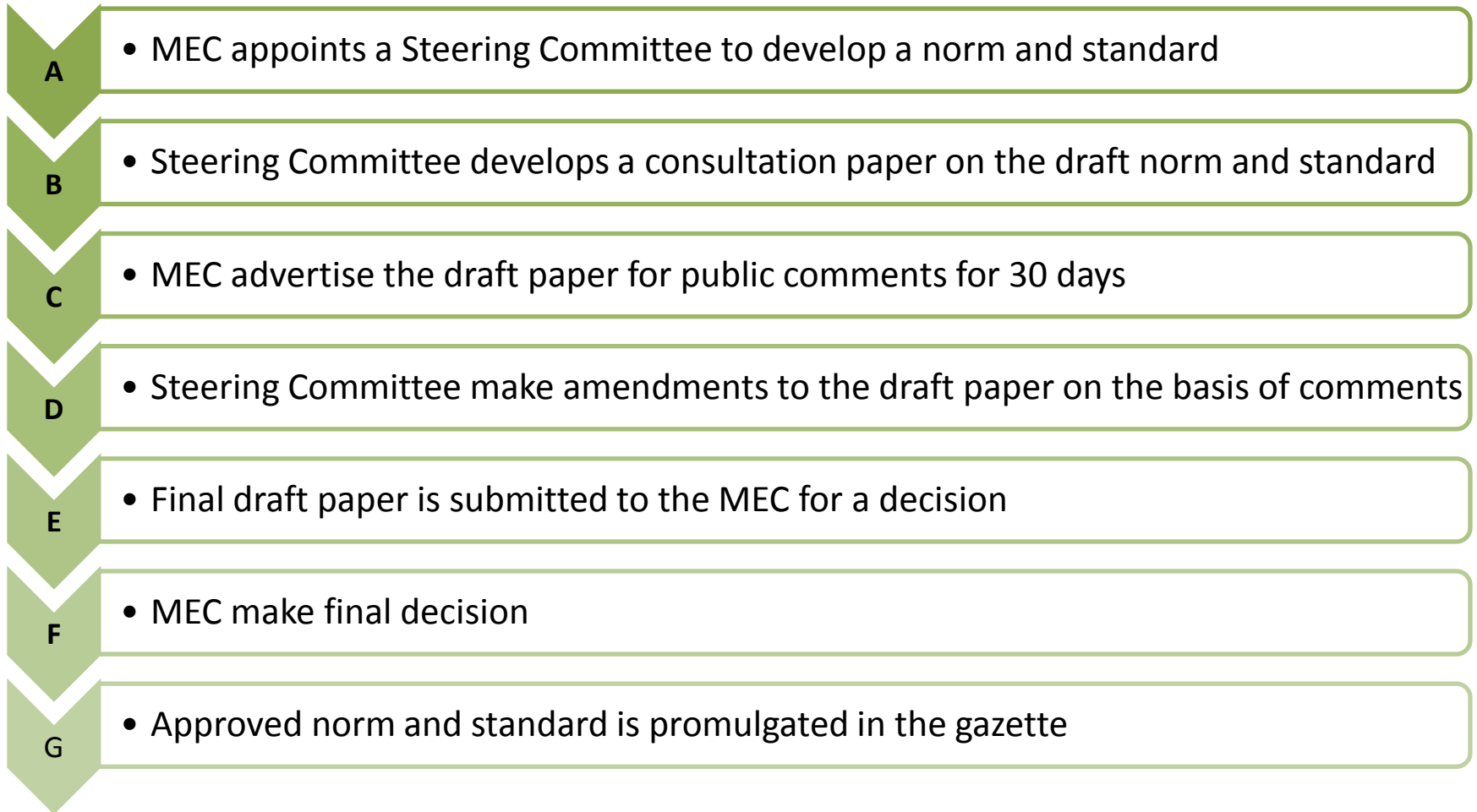
Department:
Cooperative Governance and Traditional Affairs
PROVINCE OF KWAZULU-NATAL

FOCUS AREAS

In terms of section 139 the MEC has identified the following areas for the development of provincial norms and standards:

A:	B:	C:	D:	E:
The Rural Land Use	The Protection and enhancement of the KZN Landscapes	The promotion of Sustainable Energy use in spatial planning	The promotion of Urban Densification	Spatial imperatives for public service infrastructure

NORMS AND STANDARDS DEVELOPMENT PROCESS



CURRENT PROJECTS

A: PROTECTION OF KZN LANDSCAPES NORMS AND STANDARDS

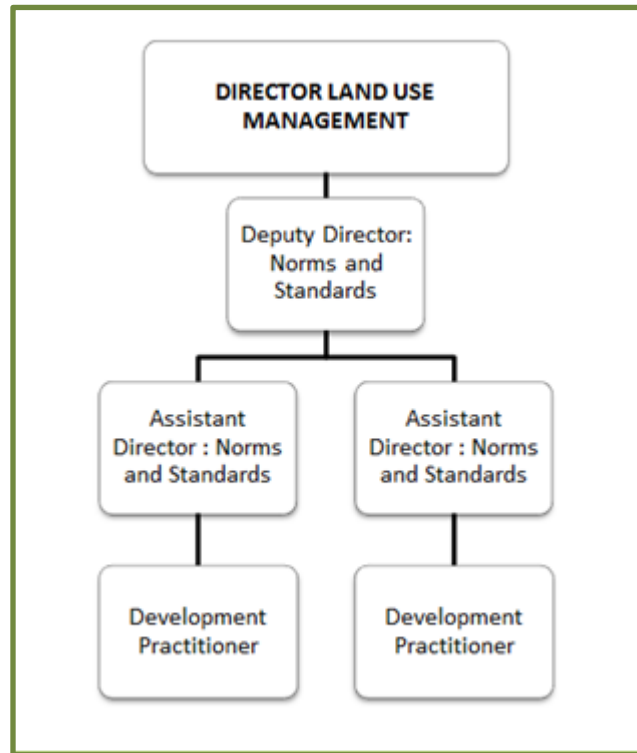
- As a step to preparing a consultation paper, the Committee is currently mapping the province to determine areas that need to be protected.

B: RURAL LAND USE NORMS AND STANDARDS

- The Committee is working on the draft consultation paper which will be taken to key stakeholders for inputs.
- The paper is the basis upon which structured engagement with provincial stakeholders will take place in order to develop the appropriate norms and standards.

COGTA TEAM

This is the current Cogta team providing support to the development of provincial planning norms and standards.





cogta

Department:
Cooperative Governance and Traditional Affairs
PROVINCE OF KWAZULU-NATAL



NORMS AND STANDARDS SUB-DIRECTORATE

1ST FLOOR SOUTHERN LIFE PLAZA

270 CHURCH STREET

PIETERMARITZBURG

3200

TEL: 033-355 6545

bonginkosi.ntuli@kzncogta.gov.za