



**cogta**

Department:  
Cooperative Governance and Traditional Affairs  
**PROVINCE OF KWAZULU-NATAL**

# **KWAZULU-NATAL NORMS AND STANDARDS FOR PUBLIC SERVICE INFRASTRUCTURE: SPATIAL IMPERATIVES**

## **PUBLIC SOCIAL FACILITIES**

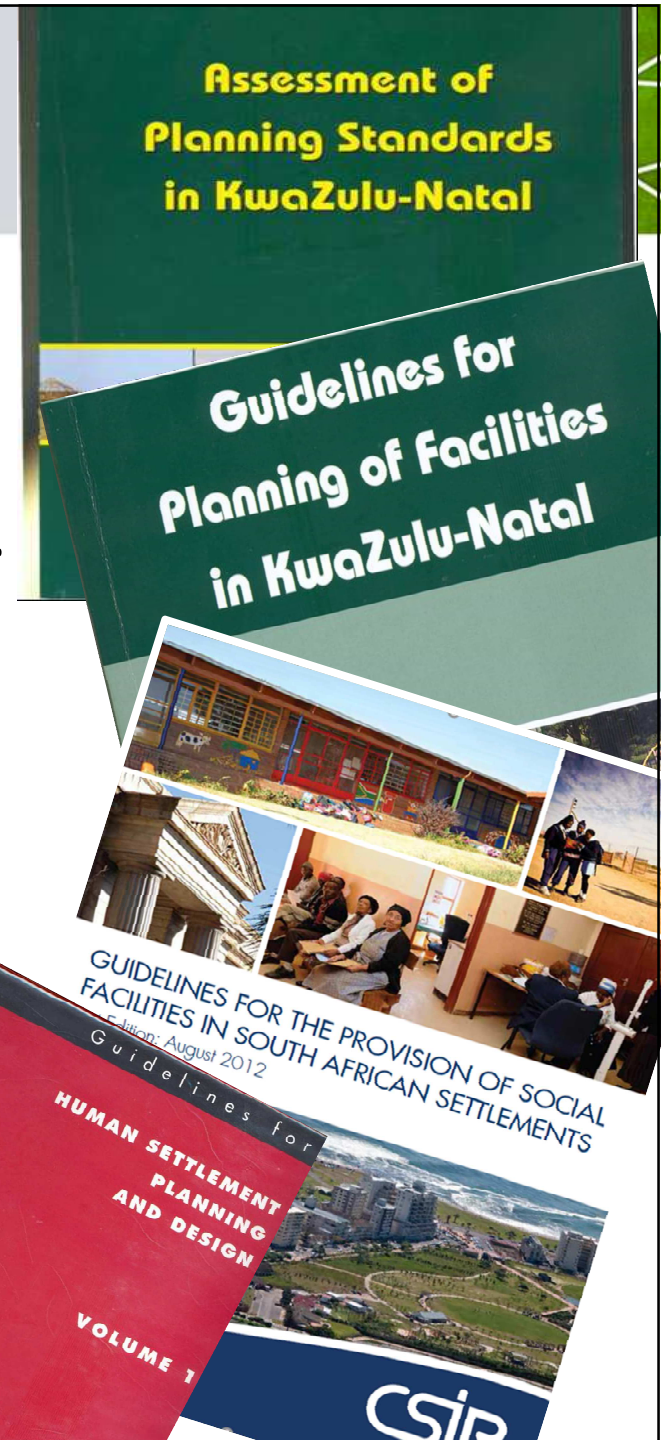
**KZN SLUMA FORUM  
16 November 2018**

**Riaan Thomson (URBIS)  
Cheri Green (CSIR)**



# Introduction and Background

- In term of Section 11 of the **KwaZulu-Natal Planning and Development Act, 2008** (Act 6 of 2008) [PDA] the MEC of Co-operative Governance and Traditional Affairs must draft **Provincial Planning and Development Norms and Standards**.
- **Steering Committee on Public Infrastructure established** by the MEC in terms of Section 139(1) of the PDA and currently focusing on developing Norms and Standards for two areas:
  - a) Telecommunication Infrastructure,
  - b) **Public Social Facilities.**



**cogta**

Department:  
Cooperative Governance and Traditional Affairs  
PROVINCE OF KWAZULU-NATAL

# WHY NORMS AND STANDARDS FOR PUBLIC SOCIAL FACILITIES?

## 1. SOCIAL JUSTICE

**Constitution requires every citizen to have access to basic services towards social well-being.**

- Social Well-being cannot be achieved without adequate (measured) social facilities in sustainable human settlements.
- Norms and Standards are thus required for improved governance and performance measurement in the provision of social services and public facilities.

## 2. STATUTORY REQUIREMENT

**Norms and Standards are required in terms of both the PDA & SPLUMA.**

- In term of Section 11 of the KwaZulu-Natal Planning and Development Act, 2008 (Act 6 of 2008) [PDA] the MEC of Co-operative Governance and Traditional Affairs must draft Provincial Planning and Development Norms and Standards.
- SPLUMA required consideration and adherence to both national and other adopted norms and standards.

## 3. PLANNING TOOL

**Basis for informed decision making and negotiation.**

- The dynamics of planning involves guidance and negotiation with various roleplayers.
- Regulatory Norms and Standards provide a starting position for planners to guide and negotiate from toward informed decision making.



# Public Social Facilities Considered

Study includes social facilities and infrastructure which is **planned or provided by various tiers of government, and will include the following:**

					
HEALTH FACILITIES	SAFETY AND SECURITY	EDUCATION	SOCIAL SERVICES	CIVIC/ COMMUNITY	PUBLIC OPEN SPACE
i.e. hospitals, clinics and community health centres etc.	i.e. police stations and contact points, fire stations etc.	i.e. libraries, early childhood development, schools etc.	i.e. variety of grants and mobile services etc.	i.e. social event facilities etc.	i.e. sport fields and parks etc.



**cogta**

Department:  
Cooperative Governance and Traditional Affairs  
PROVINCE OF KWAZULU-NATAL

# NORMS for Public Social Facilities



**cogta**

Department:  
Cooperative Governance and Traditional Affairs  
PROVINCE OF KWAZULU-NATAL



- Spatial Equity and Justice

- Rights of citizens to basic service.
- Possible Differentiated Services in sparsely populated areas.
- Require pro-active planning rather than merely addressing backlogs.

- Population and Service Catchments

- Facilities have varied population thresholds for specialisation levels.
- Similar levels of provision should have similar population thresholds.
- Catchments may not always correspond to municipal boundaries.
- Demographic profile (density, economic status) etc. impact on the nature and level of facilities.



cogta

Department:  
Cooperative Governance and Traditional Affairs  
PROVINCE OF KWAZULU-NATAL

- Hierarchy of Service Centres

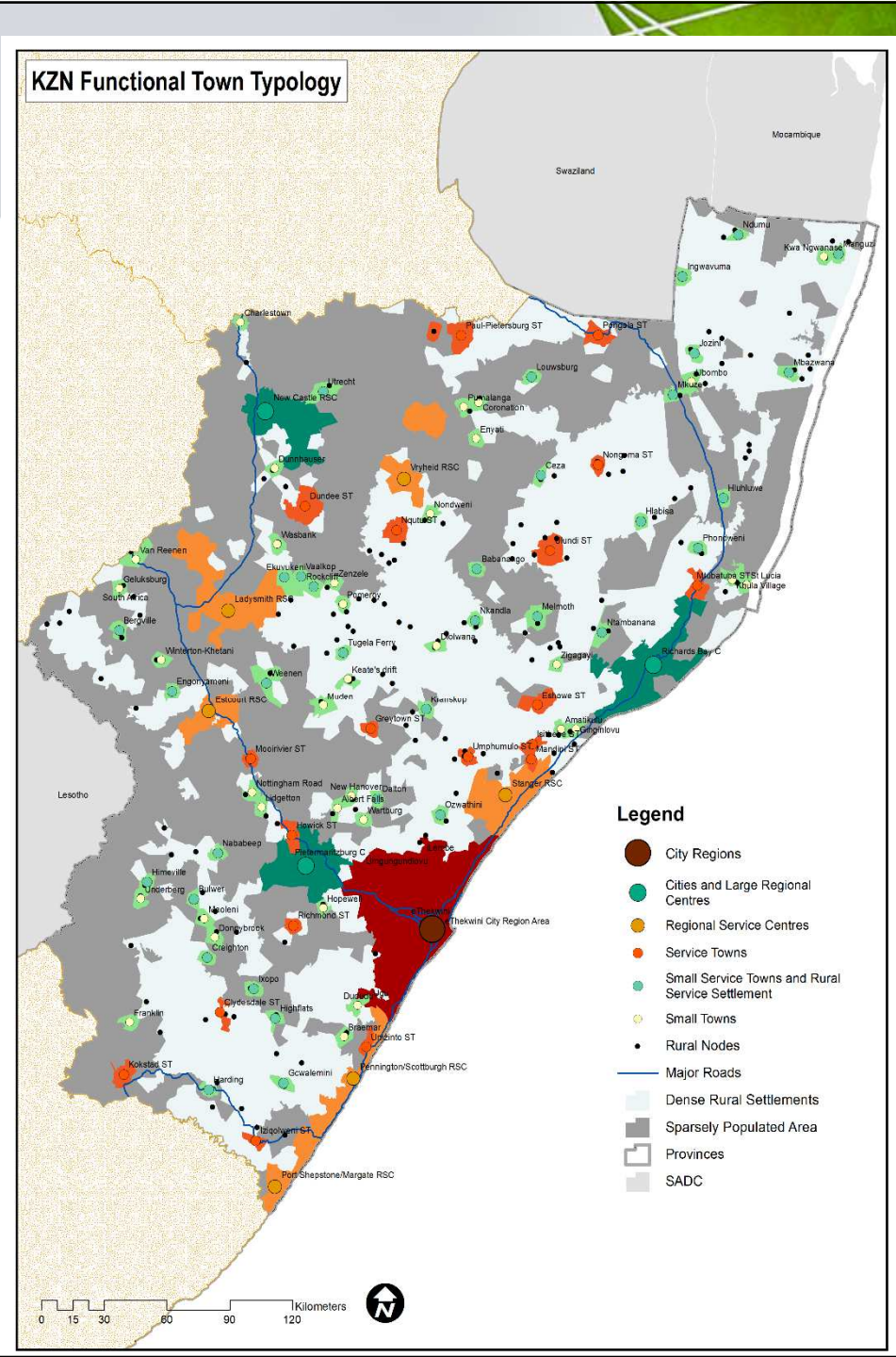
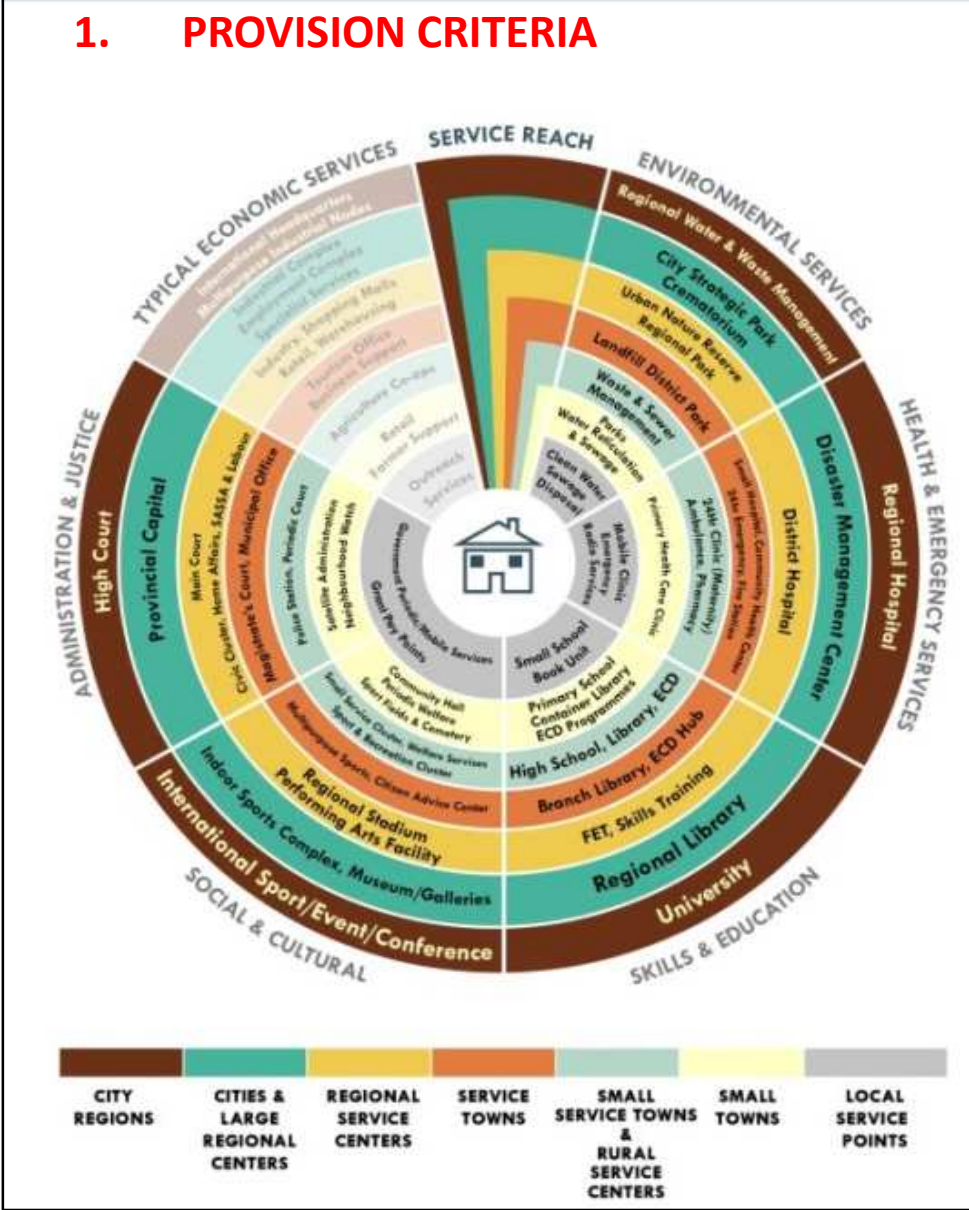
- Hierarchy of service centres will exist to streamline and co-ordinate location decision.
- Classification of settlements/towns at a provincial scale should form the basis of facility provision standards, informed by functional regions and town typologies.
- Frequency of service requirement need to be considered in hierarchy.



cogta

Department:  
Cooperative Governance and Traditional Affairs  
PROVINCE OF KWAZULU-NATAL

--





- Accessibility

- Accessibility to services based on a **system of referral** between various order facilities.
- Facilities used more frequently, should be **closer to target community** to reduce travel time.
- **Interface between facility and public transport** should influence location within context of area and level of facility.
- Site specific locality should try to align with natural accessibility points **where multi-modal PT facilities are viable**.
- Regional and site specific access to facilities should consider needs of vulnerable groups.



cogta

Department:  
Cooperative Governance and Traditional Affairs  
PROVINCE OF KWAZULU-NATAL

# NORMS [4/4]

- Clustering of Facilities

- Provide **effective distribution network** for a range of social services at central locations.
- Aimed at **reducing separate travel** to different facilities and increase access and efficiency.
- **Clustering** facilities, nodes and settlement **densification** should support each other.
- Clustering should consider similar thresholds, compatibility and hierarchy of services.
- Avoid geographically spreading facilities to thin, by creating a **depth of investment** toward effective transformation of space (i.e. impact on densification)

- Affordability

- Affordable to **both provider and user**.
- Linked to required population impacting on ability to operate and maintain facility.
- Provision of facilities should consider capital and **long term operational costs**.
- **Community opportunity costs** to be considered in the location of facilities.



cogta

Department:  
Cooperative Governance and Traditional Affairs  
PROVINCE OF KWAZULU-NATAL

# FACILITY STANDARDS INFORMATION

1. DESCRIPTION
2. FACILITY SUMMARY
3. PROVISION CRITERIA
4. MINIMUM REQUIREMENTS
5. THRESHOLD ISSUES
6. DENSITY AND DEVELOPMENT ISSUES
7. FACILITY SHARING AND CLUSTERING
8. RELEVANT ROLEPLAYERS
9. OTHER INFORMATION SOURCES



**cogta**

Department:  
Cooperative Governance and Traditional Affairs  
PROVINCE OF KWAZULU-NATAL



# FACILITY STANDARDS INFORMATION

## 1. FACILITY SUMMARY

Facilities	Facility Description	Min. Population Threshold	Max. Population Threshold	Maximum Service Access Distance	Site Size
<b>Community Health Centre</b>	Open 24 hours a day, 7 days a week. 8 beds; 17 consulting & 4 delivery rooms; may have x-rays, laboratories, physiotherapy. In remote areas with low threshold population, may be used in place of L1 See above	60 000	149 999	10 km	1.5ha minimum
<b>Community Health Day Centre</b>	A hybrid system offering similar service but open for less than 24 hours can be considered subject to local requirements; 17 consulting & 4 delivery rooms; may have x-rays, laboratories, physiotherapy. In remote areas with low threshold population if access is available may be used in place of L1.	40 000	100 000	10 km	1.5ha minimum



**cogta**

Department:  
Cooperative Governance and Traditional Affairs  
PROVINCE OF KWAZULU-NATAL

# FACILITY STANDARDS INFORMATION

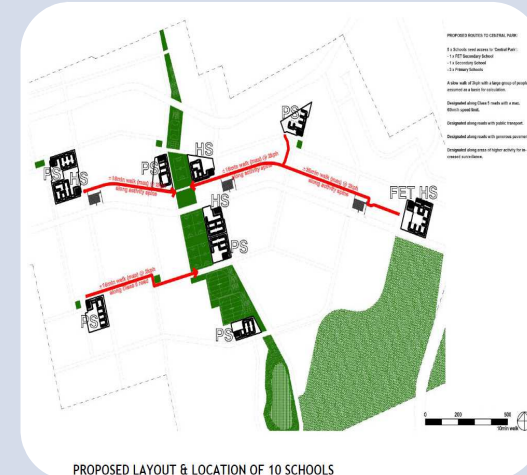
## 1. FACILITY SHARING AND CLUSTERING

Compatible facilities	Library	Primary school	Secondary school	Tertiary education/ trade schools	Community hall	Indoor sports hall	Sports stadium	Local sports field incl. multi-purpose outdoor courts	Parks: Neighbourhood	Parks: District	Parks: Regional	Swimming pool	Urban agriculture	Cemetery/ crematorium	Primary health care centre	L1 Hospital	Police station	Fire station	Worship centre	Nature conservation area
Library		•	•	•	•				•						•				•	
Primary school	•		•		•			•	•	•		•	•		•				•	
Secondary school	•	•		•	•		•	•		•	•	•	•		•				•	
Tertiary education/ trade schools	•		•		•	•	•	•		•	•	•	•		•					
Community hall	•	•	•	•		•	•	•	•	•	•	•	•		•			•	•	
Indoor sports hall				•	•		•	•		•	•	•			•					
Sports stadium			•	•	•	•		•		•	•	•								
Local sports field including multi-purpose outdoor courts		•	•	•	•	•	•		•	•	•	•								
Parks: Neighbourhood	•	•			•			•		•	•		•		•			•	•	•
Parks: District		•	•	•	•	•	•	•	•			•	•		•			•		•
Parks: Regional			•	•	•	•	•	•	•				•					•		•
Swimming pool (25-50m)		•	•	•	•	•	•	•		•								•		
Urban agriculture		•	•	•	•				•	•	•				•					•
Cemetery / Crematorium									•	•						•	•	•		•
Primary health care centre	•	•	•	•	•	•			•	•			•			•				
L1 Hospital														•	•			•		
Police station														•				•		
Fire station					•				•	•	•	•		•		•	•			
Worship centre	•	•	•		•				•											
Nature conservation area									•	•	•		•	•						

# Innovation in Space Saving

CLUSTERS	SHARED CLUSTERS OF SOCIAL FACILITIES	NO. OF CLUSTERS	*POSSIBLE AREA REQUIRED PER CLUSTER (HA)
	2 Primary Schools + 1 Secondary School + 4 Sports Fields + Clinic + Swimming Pool	1	5.2 ha
	Community Hall + Clinic + 2 Primary Schools + 1 Secondary School + 4 Sports Fields + Government Offices + Library	1	5 ha
	2 Primary Schools + 1 Secondary School + 4 Sports Fields + Community Hall	1	6 ha
	2 Primary Schools + 1 Secondary School + 4 Sports Fields	2	4 ha – 5.5 ha
	2 Primary Schools + 1 Secondary School + 4 Sports Fields + Community Hall	2	5.2 ha – 5.6 ha
	2 Primary Schools + 2 Sports Fields + Library + Clinic + Swimming Pool	1	4 ha
	2 Primary Schools + 2 Sports Fields + Library + Clinic	1	3.7 ha
	Community Health & ARV – Stand Alone	1	3 ha
	Fire Station – Stand Alone	1	0.5 ha
	Police Station – Stand Alone	1	1 ha

\* E & D INDICATES SHARED AND CLUSTERED SOCIAL FACILITIES FOR CORNUBIA



**Shared Clusters of Facilities on one site (Cornubia)**

**Independent Facilities Clustered around shared ancillary services (Valhalla Park)**

**Positioning of facilities to share nearby ancillary services (Oakland Development)**



**cogta**

Department:  
Cooperative Governance and Traditional Affairs  
PROVINCE OF KWAZULU-NATAL



# Way forward

- Key departmental interviews and comments.
- Final Draft Report.
- Endorsement by Steering Committee and MEC.
- Advertisement for public comment.
- Circulation to roleplayers for comment.
- Approval by MEC and publication in Provincial Gazette.



cogta

Department:  
Cooperative Governance and Traditional Affairs  
PROVINCE OF KWAZULU-NATAL



**cogta**

Department:  
Cooperative Governance and Traditional Affairs  
**PROVINCE OF KWAZULU-NATAL**

# THANK YOU

**Riaan Thomson (URBIS)**  
riaan@urbis.co.za

**Cheri Green (CSIR)**  
cgreen@csir.co.za