



cogta

Department:
Cooperative Governance and Traditional Affairs
PROVINCE OF KWAZULU-NATAL

THE PROVINCIAL SPATIAL DEVELOPMENT FRAMEWORK Towards Spatial Equity

Ivan Scholtz
23 August 2019

BACK TO BASICS: SERVING OUR COMMUNITIES BETTER

B4B



cogta

Department:
Cooperative Governance and Traditional Affairs
PROVINCE OF KWAZULU-NATAL

PRESENTATION OUTLINE

1. BACKGROUND
2. PLANNING IMPERATIVES
3. PSDF PROCESSES TO DATE
4. THE SPATIAL EQUITY AGENDA
5. WAY FORWARD



cogta

Department:
Cooperative Governance and Traditional Affairs
PROVINCE OF KWAZULU-NATAL

BACKGROUND



cogta

Department:
Cooperative Governance and Traditional Affairs
PROVINCE OF KWAZULU-NATAL

The community continually
assess our performance

Our ability to positively
impact and satisfy
communities, is the
ultimate measure of our
performance.

Plan, Prioritize, Implement,
Measure, Assess,
Improve...



Source: <http://www.dispatchlive.co.za>

Long Commutes & Congestion



Source: www.wheel24.com

Overburdening of accessible facilities and long queues



Source: <http://www.iol.co.za>

Areas of informality adjacent to accessible
and serviced areas



Source: <https://publiceyemaritzburg.co.za>

High Unemployment

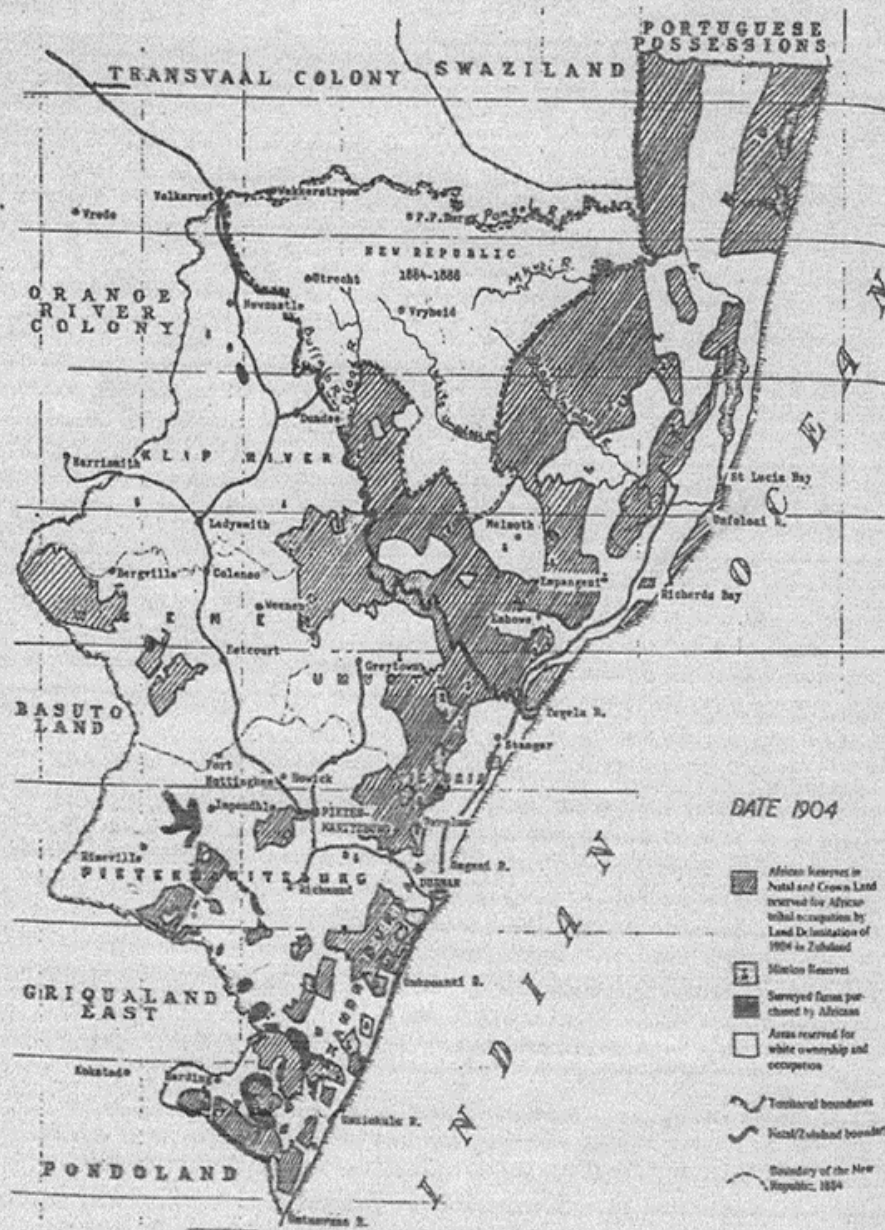


Source: <http://www.youthvillage.co.za>

Social Unrest & Protests

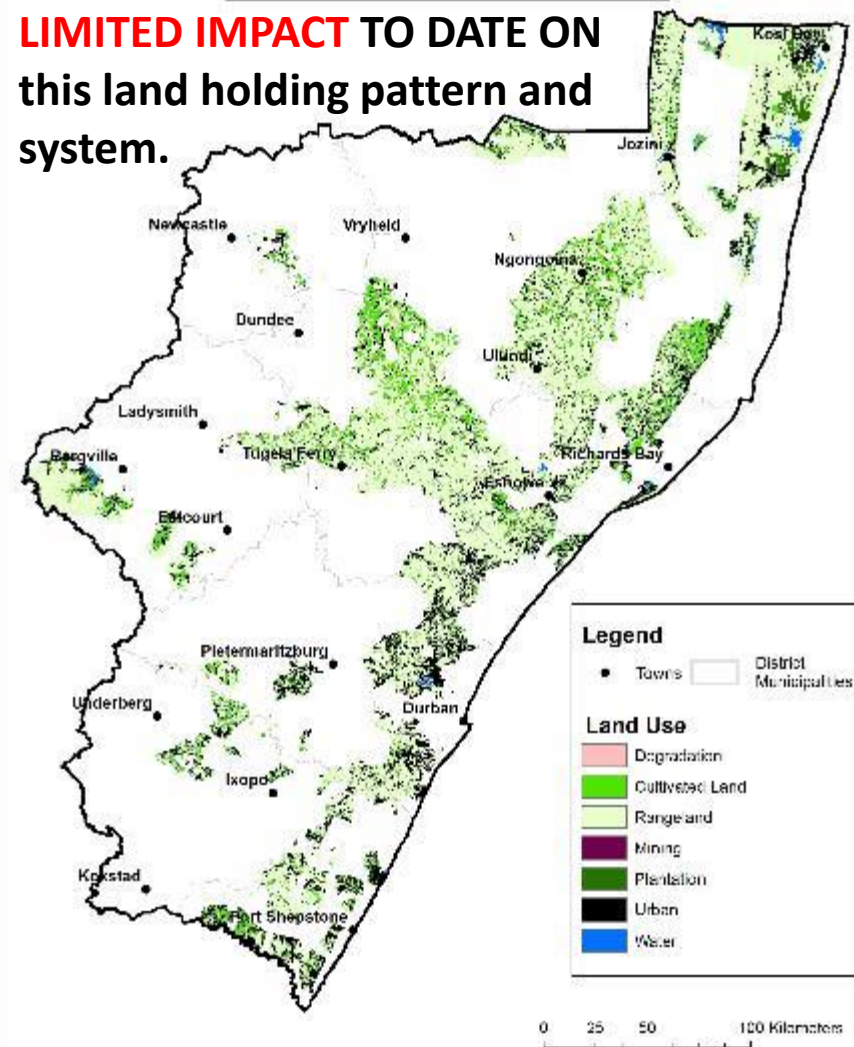


Source: <http://www.iol.co.za>



Land Cover (2014) in ITB Areas

LIMITED IMPACT TO DATE ON
this land holding pattern and
system.



Prepared by:
K. B. N. N. N.
N. N. N. N. N. N.
N. N. N. N. N. N.
N. N. N. N. N. N.



STUDY AREA / FARM
KZN Master Plan

CLIENT
KZN DARD

TITLE
Land Cover in ITB

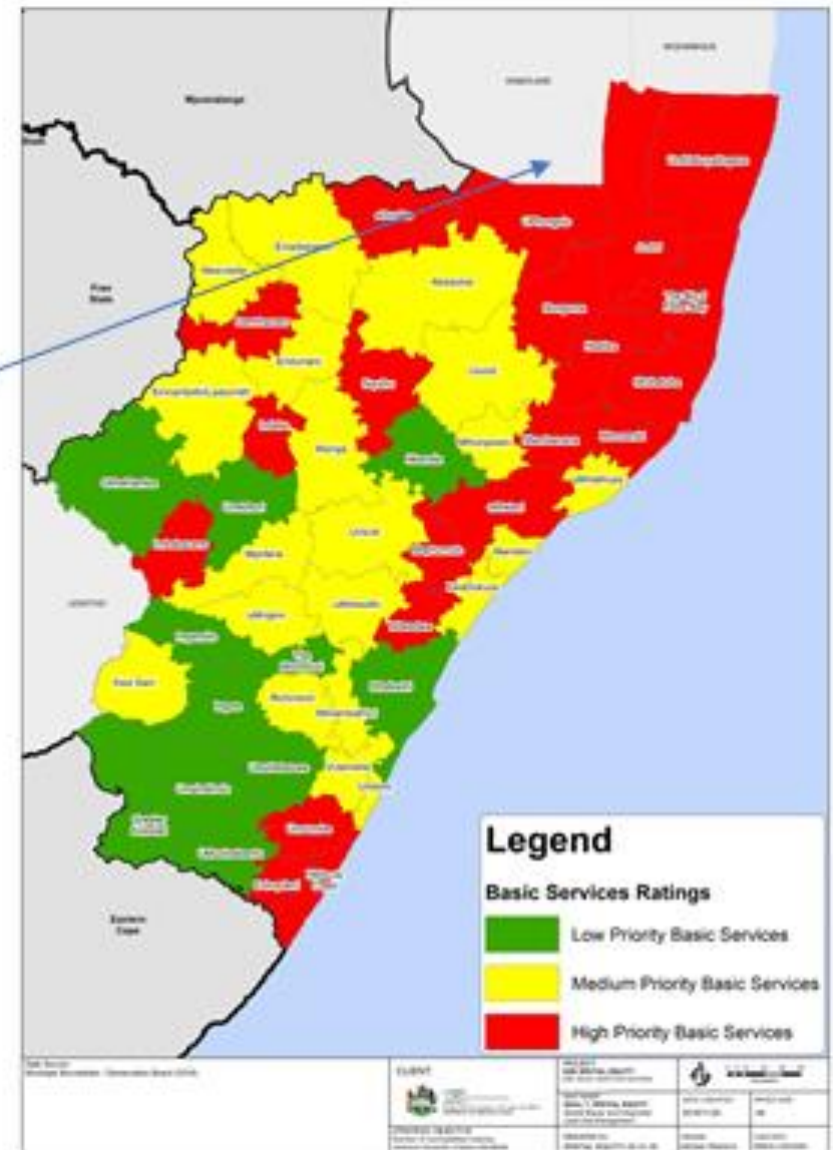
Source:
SC ITB, LC, 2014



Department:
Cooperative Governance and Traditional Affairs
PROVINCE OF KWAZULU-NATAL

Areas in Red denote where Basic Services are of High Priority in relation to each Municipality

- Problem is bigger than what we are able to chase in terms of backlog delivery.
- **Are we planning the right way?**



BACK TO BASICS: SERVING OUR COMMUNITIES BETTER



SLOW LAND RELEASE



<https://www.groundup.org.za>

BALANCING ACT



REACTIONARY

what's the
opposite of
reactionary?

progressive, radical, liberal,
leftist, unorthodox,
revolutionary, reformist,
modern, lefty, broad-minded



ONE SIZE FITS ALL



BACK TO

ETTER **B&B**



N3

Tollgate

2015



N3

Mariannhill Toll Plaza

2019



BACK TO BASICS: SERVING OUR COMMUNITIES BETTER

D4D



cogta

Department:
Cooperative Governance and Traditional Affairs
PROVINCE OF KWAZULU-NATAL

What is the **existing** **Citizen Satisfaction**

reality and
perception?.....

Some highlights in the
following **Statistics**
South Africa Citizen
Satisfaction Survey, and
importance of basic
services...



Source: <http://www.dispatchlive.co.za>

Long Commutes & Congestion



Source: www.wheel24.com

Overburdening of accessible facilities and long queues



Source: <http://www.iol.co.za>

Areas of informality adjacent to accessible
and serviced areas



Source: <https://publiceyemaritzburg.co.za>

High Unemployment



Source: <http://www.youthvillage.co.za>

Social Unrest & Protests



Source: <http://www.iol.co.za>

BACK TO BASICS: SERVING OUR COMMUNITIES BETTER

B&B



36%

Dissatisfaction with
overall performance
of KwaZulu-Natal
provincial
government



31%

Somewhat Satisfied
with overall
performance of
KwaZulu-Natal
provincial
government



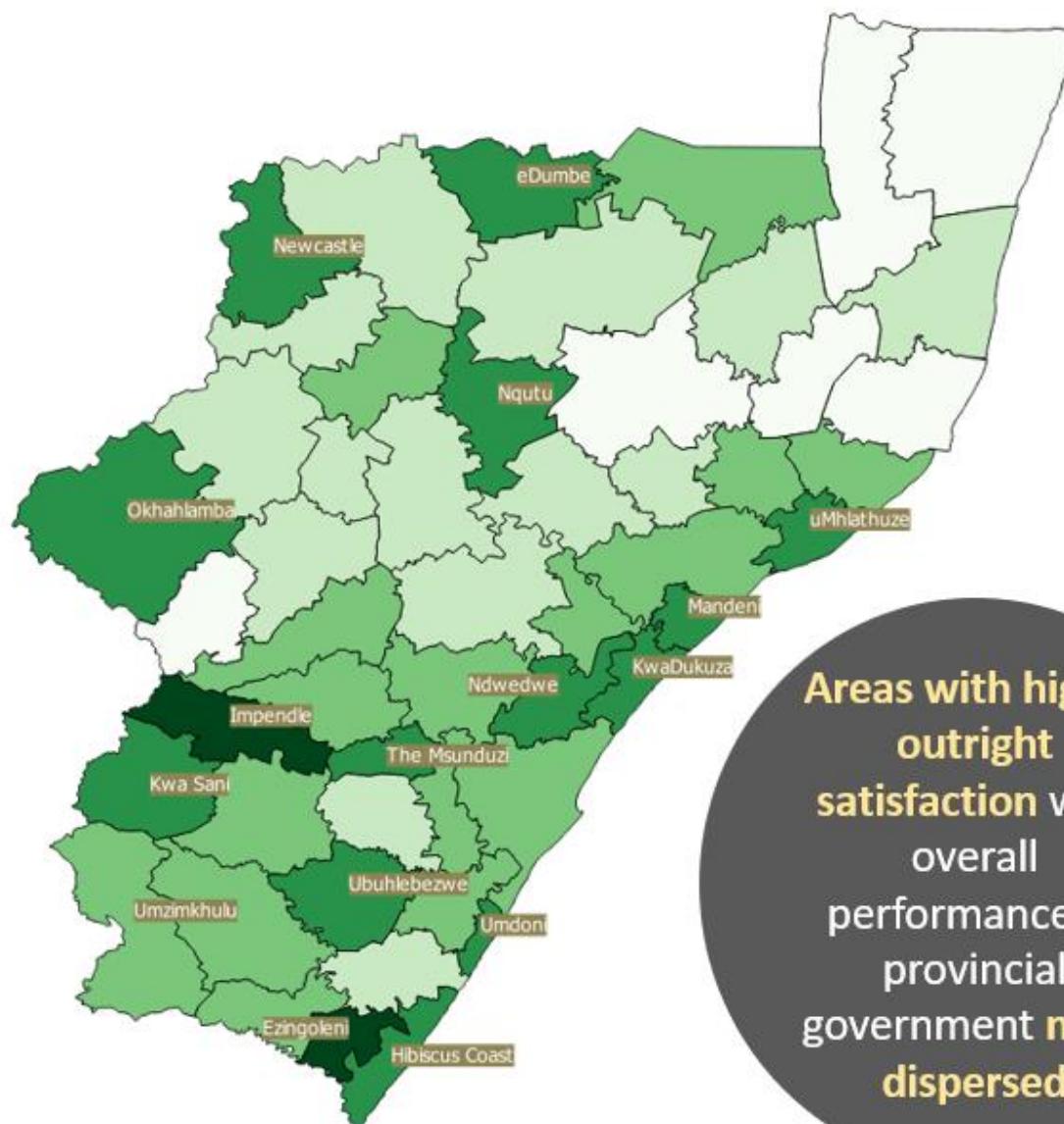
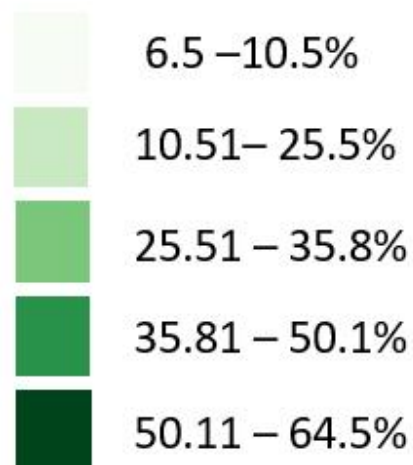
33%

Outright Satisfaction
with overall
performance of
KwaZulu-Natal
provincial
government

Outright satisfaction with performance of provincial government by municipality



Outright satisfaction

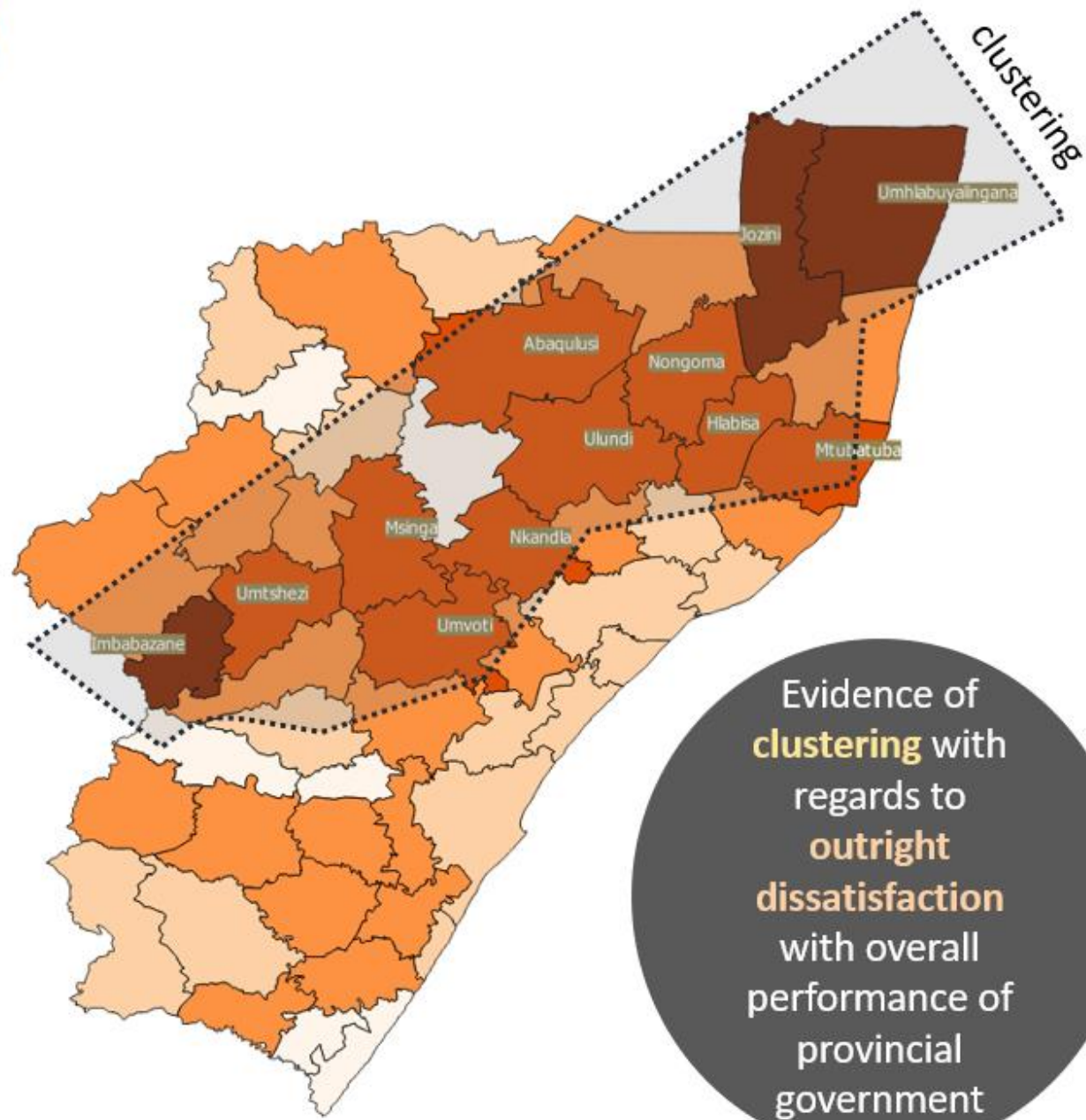
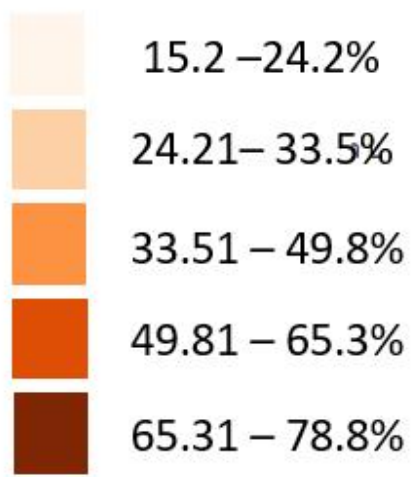


Areas with higher outright satisfaction with overall performance of provincial government **more dispersed**

Outright dissatisfaction with performance of provincial government by municipality



Outright dissatisfaction



Evidence of **clustering** with regards to **outright dissatisfaction** with overall performance of provincial government





cogta

Department:
Cooperative Governance and Traditional Affairs
PROVINCE OF KWAZULU-NATAL

PLANNING IMPERATIVES



cogta

Department:
Cooperative Governance and Traditional Affairs
PROVINCE OF KWAZULU-NATAL

CONSTITUTION

BILL OF RIGHTS

SECTION 9: Equality

SECTION 10: Human dignity

SECTION 24: Environment

SECTION 26: Housing

SECTION 27: Healthcare, food, water
& social security

SPATIAL PLANNING & LAND USE MANAGEMENT ACT

SPLUMA PRINCIPLES

Spatial Justice

Spatial Sustainability

Efficiency

Spatial Resilience

Good Administration

Alignment

SDFs @ 3 levels of government.

THE CONCEPT OF SPATIAL EQUITY THE ORIGINS

PGDS/P

STRATEGIC GOALS

1

**INCLUSIVE
ECONOMIC
GROWTH**

2

**HUMAN RESOURCE
DEVELOPMENT**

3

**HUMAN AND
COMMUNITY
DEVELOPMENT**

4

**STRATEGIC
INFRASTRUCTURE**

5

**ENVIRONMENTAL
SUSTAINABILITY**

6

**GOVERNANCE AND
POLICY**

7

**SPATIAL
EQUITY**

VISION 2035

KwaZulu-Natal will
be a prosperous
Province with a
healthy, secure
and skilled
population, living
in dignity and
harmony, acting
as a gateway to
Africa and the
World



These are our
7 Goals, only Goals 1
and 5 refined

31

STRATEGIC OBJECTIVES

BACK TO BASICS: SERVING OUR COMMUNITIES BETTER





cogta

Department:
Cooperative Governance and Traditional Affairs
PROVINCE OF KWAZULU-NATAL

STATE OF THE NATION ADDRESS

SONA: Working together, we must undertake the following tasks:

- Accelerate **inclusive economic growth and create jobs**.
- Improve the **education system** and **develop the skills** that we need now and into the future.
- **Improve the conditions of life** for all South Africans, especially the poor.
- Step up the **fight against corruption** and state capture.
- **Strengthen the capacity of the state** to address the needs of the people.



cogta

Department:
Cooperative Governance and Traditional Affairs
PROVINCE OF KWAZULU-NATAL

STATE OF THE PROVINCE ADDRESS

SOPA: Eight Provincial Priorities were identified as the corner-stones of Government's Programme of Action, namely:

- Building an **Inclusive Economy** that Creates **Decent Jobs**;
- **Transform our Rural areas**;
- Ensure **Decent Living Conditions and Sustainable Human Settlements**;
- Improve and **Expand Education and Training**;
- Ensure **Quality Health Care** for All;
- Expand **Comprehensive Social Security**;
- Fight **Crime and Corruption**; and
- Build a United Nation and **Promote Social Cohesion**.

BACK TO BASICS: SERVING OUR COMMUNITIES BETTER





cogta

Department:
Cooperative Governance and Traditional Affairs
PROVINCE OF KWAZULU-NATAL

PSDF PROCESSES TO DATE

- Background
- Planning Imperatives





cogta

Department:
Cooperative Governance and Traditional Affairs
PROVINCE OF KWAZULU-NATAL

PSDF PROCESSES TO DATE

1. Delays in **SCM processes** but this is nearing conclusion.
2. Establishment of a **Project Steering Committee**.
3. **National** Spatial Development Framework development and alignment.
4. **Spatial Visioning** Exercise undertaken.
5. Sector and Municipal **engagements** undertaken.
6. Development of a **Spatial Prioritisation Tool**.
7. **Refinement of definition** of Spatial Equity.



cogta

Department:
Cooperative Governance and Traditional Affairs
PROVINCE OF KWAZULU-NATAL

THE SPATIAL EQUITY AGENDA

BACK TO BASICS: SERVING OUR COMMUNITIES BETTER





cogta

Department:
Cooperative Governance and Traditional Affairs
PROVINCE OF KWAZULU-NATAL

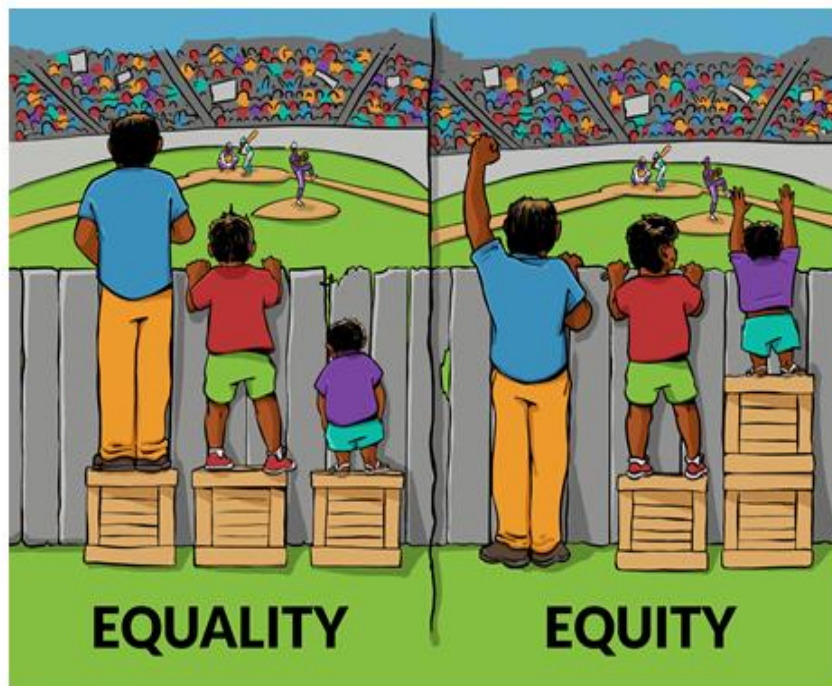
THE SPATIAL EQUITY AGENDA

The Spatial Equity Agenda for the province is **premised around spatial transformation**. The conceptualisation of Spatial Transformation Areas as priority areas for Spatial Equity will provide the basis for:

- **Prioritising public investment and incentivising private sector investment;**
- Informing the **revision of more detailed regional, corridor and nodal plans;**
- **Supporting short, medium and longer-term infrastructure provision** – particularly where infrastructure deficits inhibit development within Compaction/Strategic Focus Areas and Incremental Growth Areas;
- **Enhanced capital budget prioritisation and grant funding alignment** across sectors and spheres;
- **Supporting and guiding the Provinces' land acquisition and disposal strategies;**
- A **spatial rating system to evaluate human settlement programmes and prospective land acquisitions** in support of the Integrated Human Settlement Framework; and
- **Spatial monitoring and evaluation reporting** in support of the PSDF implementation.

Equality implies:

- Same level of service for all / Equal allocations for
 - Education
 - Health
 - Water
 - Sanitation
 - Electricity
 - Refuse
 - Local Economic Development
 - Skills
 - Social Welfare
 - Community services
 - Safety & Security
 - Transport
 - Culture & Heritage



Equity implies:

- Varying allocations to ensure Enhancing of local areas for:
 - Education
 - Enhancing Health
 - Enhancing Water
 - Sanitation
 - Electricity
 - Refuse
 - Local Economic Development
 - Skills
 - Social Welfare
 - Community services
 - Safety & Security
 - Transport
 - Culture & Heritage

All Areas will get the same resources but not everyone will have same level of service

Some / Most areas will get more resources to get on par with basic levels of service

Spatial Equity Pillars

PROVINCIAL GROWTH AND DEVELOPMENT PLAN (PGDP)

KZN POVERTY ERADICATION MASTER PLAN

PROVINCIAL SPATIAL DEVELOPMENT FRAMEWORK (PSDF)

PROVINCIAL SPATIAL ECONOMIC DEVELOPMENT STRATEGY (PSEDS)

Pillar 1
Equitable Access
to Basic
Household
Infrastructure

Pillar 2
Equitable Access
to Housing

Pillar 3
Equitable Access
to Security to
Tenure (proxy to
ownership)

Pillar 4
Equitable Access
to Food Security

Pillar 5
Equitable Access
to Ecosystems

Pillar 6
Equitable Access
to Safe and
Healthy Living
Environment

Pillar 7
Equitable Access
to a Range of
Transport
Options

Pillar 8
Equitable Access
to Social &
Recreational
Infrastructure

Pillar 9
Equitable
Access to
Employment

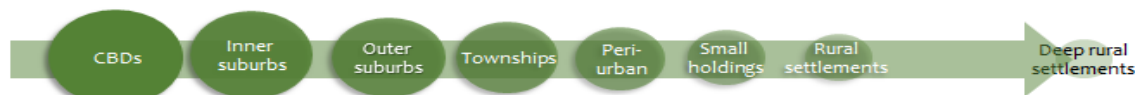
PROVINCIAL SPATIAL PRIORITIZATION FRAMEWORK

KZN PROVINCIAL SECTOR NORMS AND STANDARDS

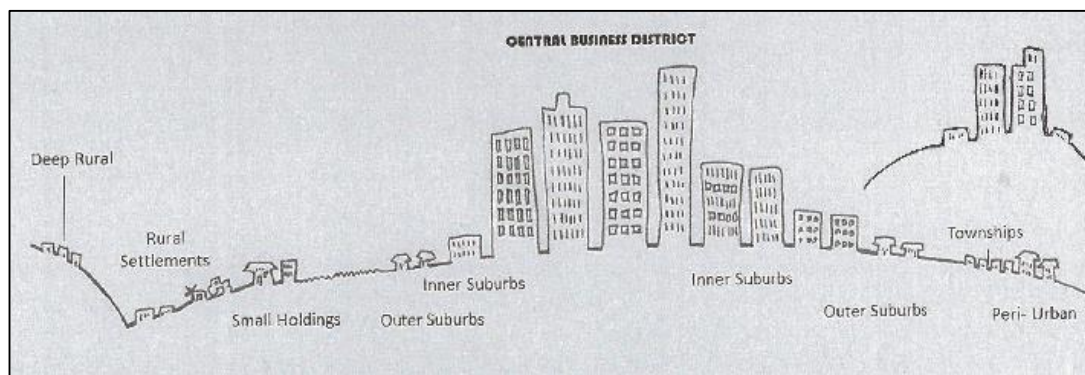
KZN PROVINCIAL INTEGRATED INFRASTRUCTURE MASTER PLAN (KZNIIMP)

Attempting Level of Service Framework

Eight (8) Settlement Types



Each Settlement Type Requires a Different Level of Service
(LoS) Expectation for Infrastructure





cogta

Department:
Cooperative Governance and Traditional Affairs
PROVINCE OF KWAZULU-NATAL

CONCEPT OF ALIGNING SPATIAL EQUITY NORMS AND STANDARDS - SPATIAL BUDGETING AND SPEND

- It is becoming **increasingly possible** to provide, through the Provincial IRM & MIG, as well as Metro processes, **spend by Department down to a latitude- longitude level for Capital Projects**. Exceptions are DARD and DHS but this is being addressed.



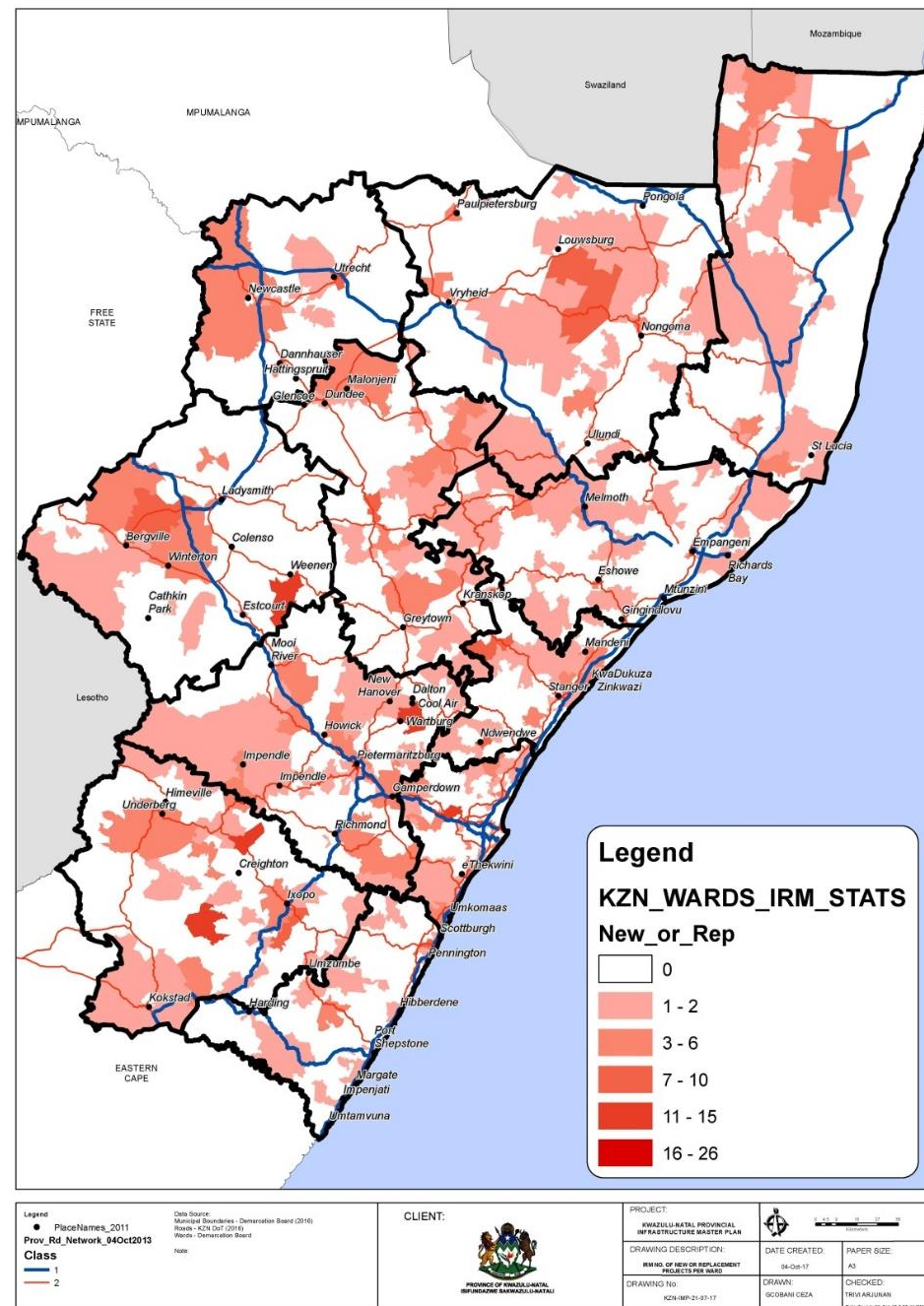
cogta

Department:
Cooperative Governance and Traditional Affairs
PROVINCE OF KWAZULU-NATAL

**AT PRESENT PROVINCIAL
INFRASTRUCTURE
REPORTING DATA FROM
THE TREASURY
INFRASTRUCTURE
REPORTING MODEL SPATIAL
MAPPED AND TRACKED
(Example of New and
Replacement Projects
mapped)**

MAP BASED END MARCH 2018

WARD LEVEL





cogta

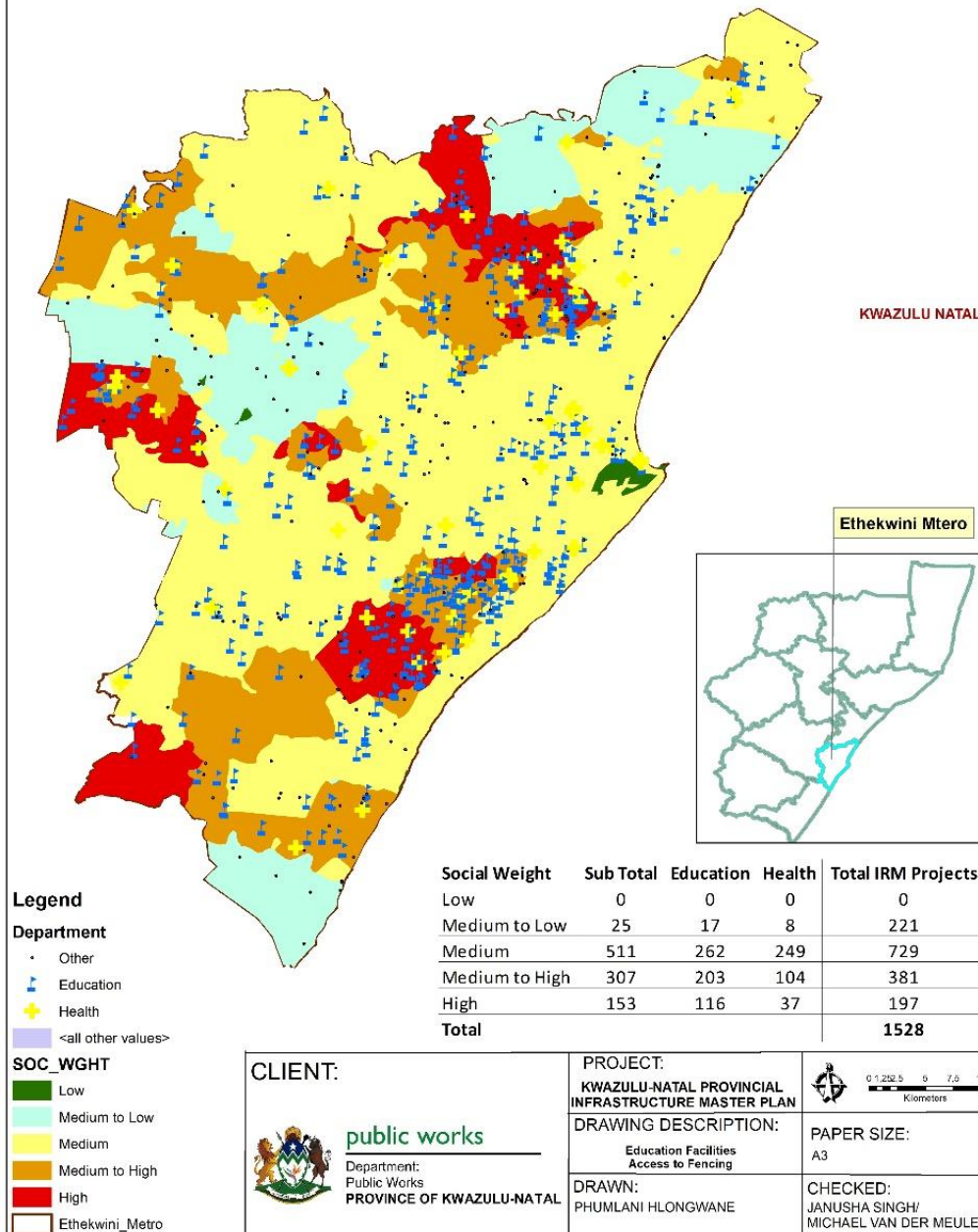
Department:
Cooperative Governance and Traditional Affairs
PROVINCE OF KWAZULU-NATAL

**DEPARTMENTAL PROJECTS CAN ALSO BE
SPATIALLY OVERLAID WITH PGDP(PSDF-
Old) SOCIAL NEEDS PRIORITY
INTERVENTION AREA LAYERS TO ASSESS
SPATIAL EQUITY TARGETED ALIGNMENT**

**THIS CAN ALSO BE DONE FOR MIG
PROJECTS AND ETHEKWINI METRO
PROJECTS (WHERE SPATIAL REFERENCING
HAS BEEN UPDATED)**

***THIS MAP EXAMPLE IS BASED ON
IN- YEAR REPORTS FOR
EDUCATION AND HEALTH
PROJECTS 2017/18 AT THE END
OF MARCH FROM THE IRM.***

**PROVINCE OF KWAZULU NATAL
EDUCATION AND HEALTH IRM PROJECTS - ETHEKWINI METRO
ACCORDING TO SOCIAL NEEDS**





cogta

Department:
Cooperative Governance and Traditional Affairs
PROVINCE OF KWAZULU-NATAL

THE WAY FORWARD

BACK TO BASICS: SERVING OUR COMMUNITIES BETTER





cogta

Department:
Cooperative Governance and Traditional Affairs
PROVINCE OF KWAZULU-NATAL



As a Collective we need to inform the PSDF and PGDS/P review process to **confirm current and new spatial priority areas, spatial indicators and targets** in support of the Spatial Equity and Spatial Transformation.

Spatial Budget prioritization and alignment to spatial priority areas, using available monitoring and planning tools, will be essential to achieve this end.



cogta

Department:
Cooperative Governance and Traditional Affairs
PROVINCE OF KWAZULU-NATAL

A photograph of a sunset over a field with a wire fence. The sun is low on the horizon, casting a warm glow over the scene. The fence is made of metal posts and wire, and the field is covered in tall grass.

Thank You

BACK TO BASICS: SERVING OUR COMMUNITIES BETTER

B4B